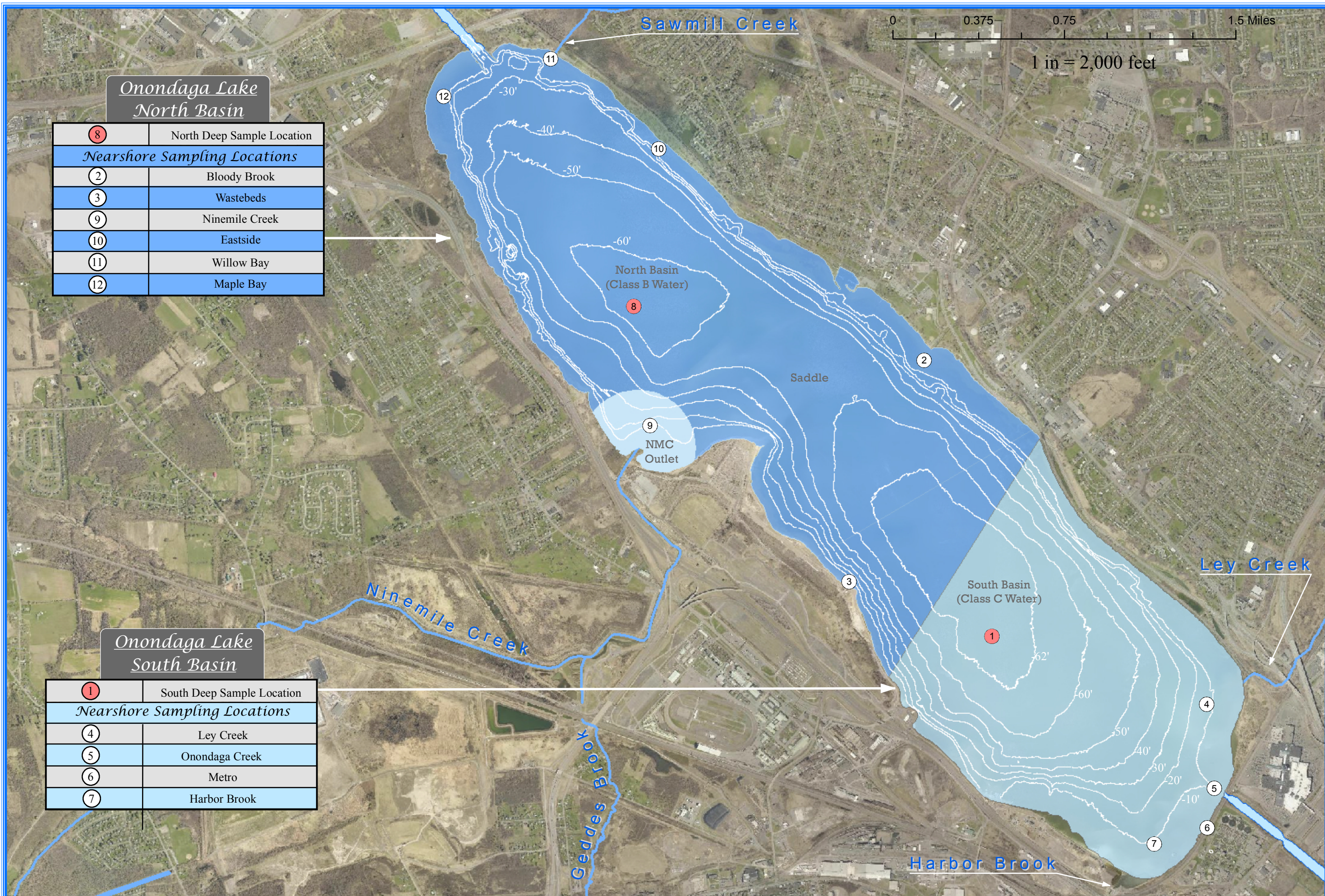
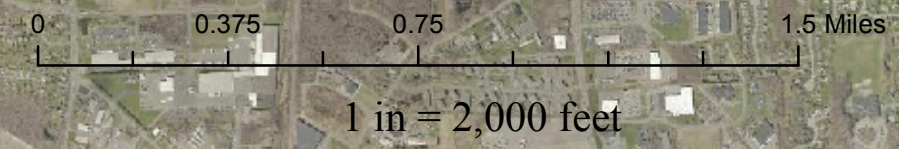


ONONDAGA COUNTY
 WATER ENVIRONMENT PROTECTION
 ONONDAGA LAKE SAMPLING LOCATIONS (AMP 2016)



*Onondaga Lake
North Basin*

⑧	North Deep Sample Location
<i>Nearshore Sampling Locations</i>	
②	Bloody Brook
③	Wastebeds
⑨	Ninemile Creek
⑩	Eastside
⑪	Willow Bay
⑫	Maple Bay

*Onondaga Lake
South Basin*

①	South Deep Sample Location
<i>Nearshore Sampling Locations</i>	
④	Ley Creek
⑤	Onondaga Creek
⑥	Metro
⑦	Harbor Brook

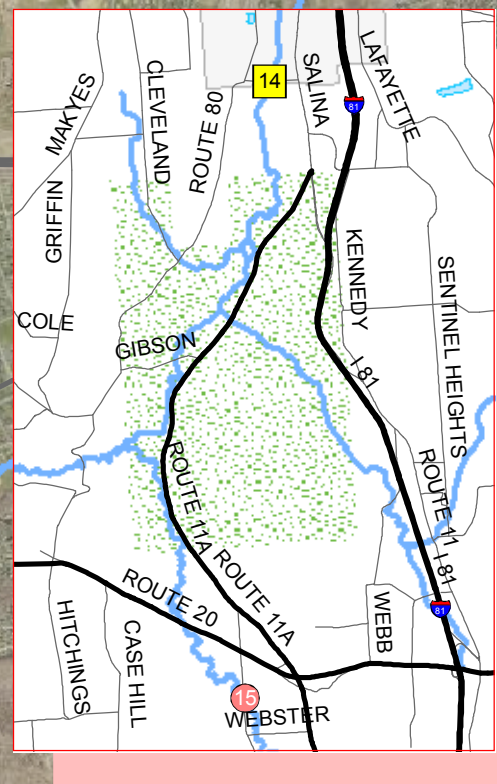
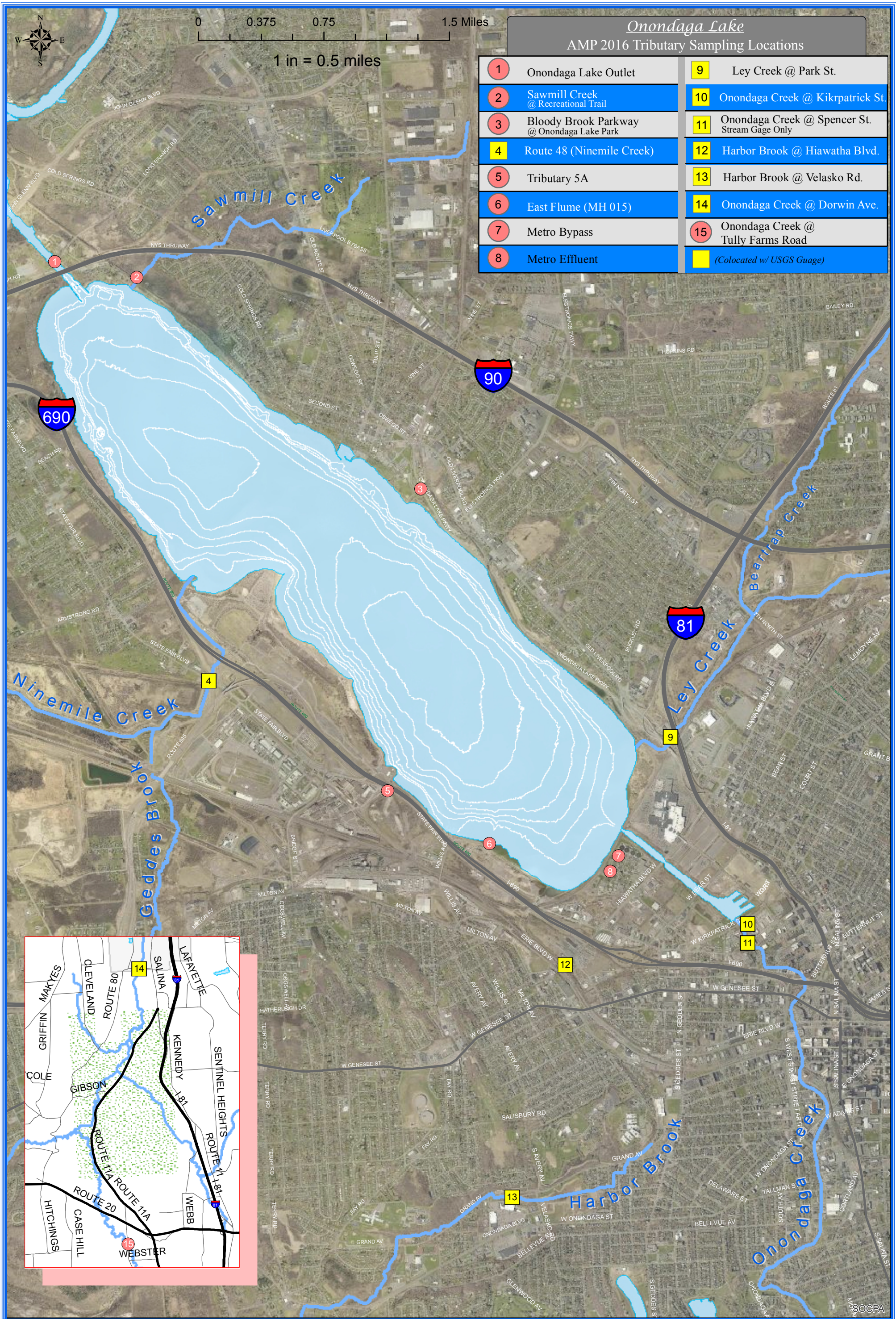


0 0.375 0.75 1.5 Miles

1 in = 0.5 miles

Onondaga Lake AMP 2016 Tributary Sampling Locations

1	Onondaga Lake Outlet	9	Ley Creek @ Park St.
2	Sawmill Creek @ Recreational Trail	10	Onondaga Creek @ Kikpatrick St.
3	Bloody Brook Parkway @ Onondaga Lake Park	11	Onondaga Creek @ Spencer St. Stream Gage Only
4	Route 48 (Ninemile Creek)	12	Harbor Brook @ Hiawatha Blvd.
5	Tributary 5A	13	Harbor Brook @ Velasko Rd.
6	East Flume (MH 015)	14	Onondaga Creek @ Dorwin Ave.
7	Metro Bypass	15	Onondaga Creek @ Tully Farms Road
8	Metro Effluent		(Colocated w/ USGS Gauge)



ONONDAGA COUNTY WATER ENVIRONMENT PROTECTION TRIBUTARY SAMPLING LOCATIONS AMP 2016

