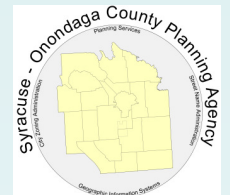
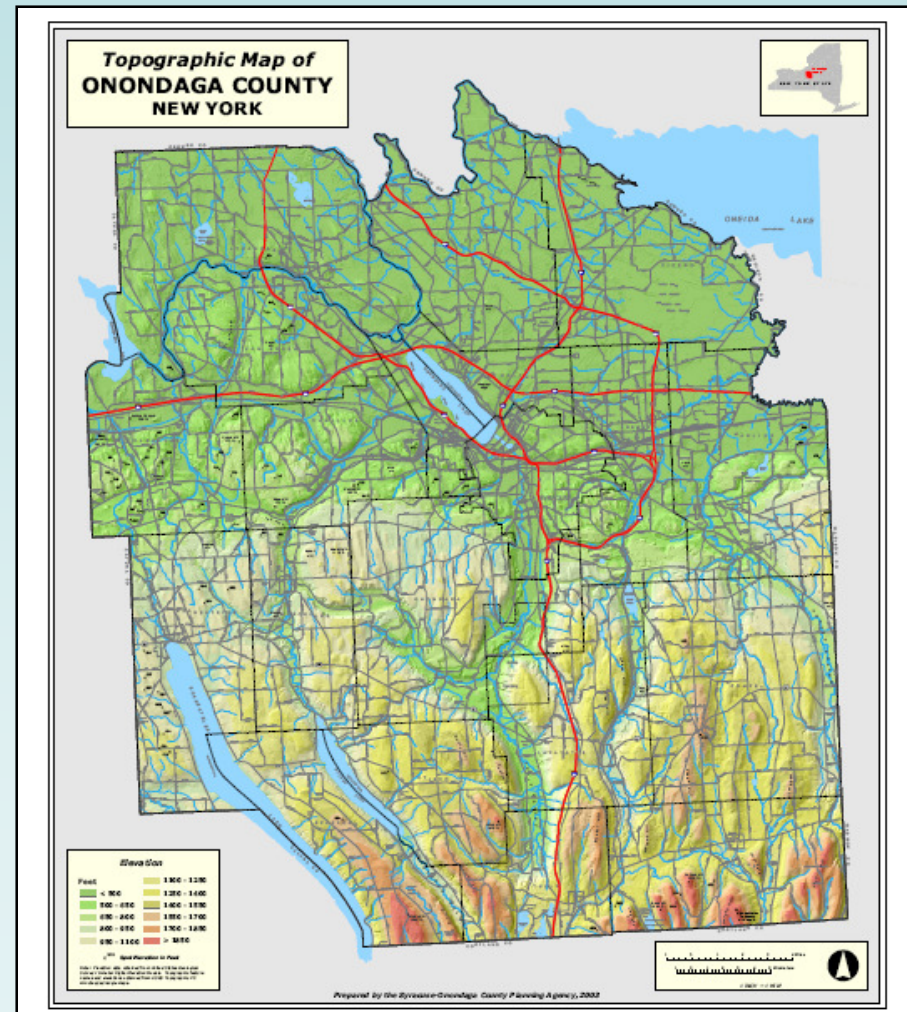


Land Development In Onondaga County: Regional Trends and Challenges

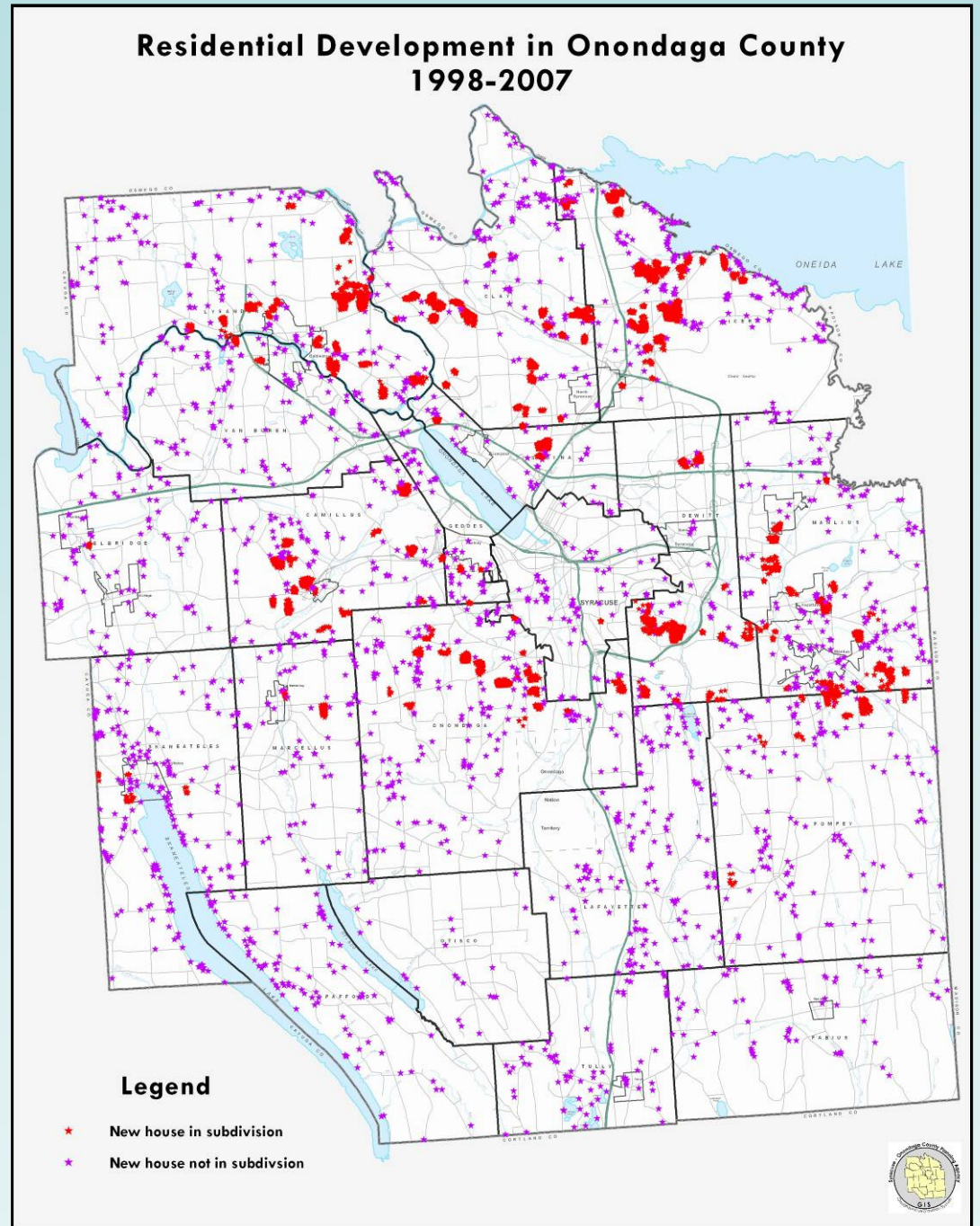
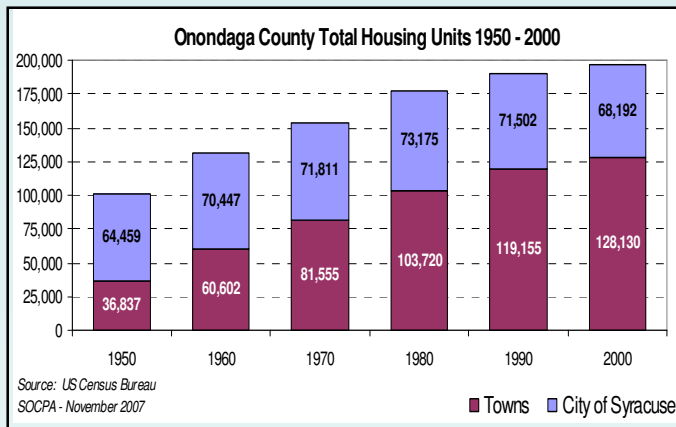


Regional Development Trends & Decisions



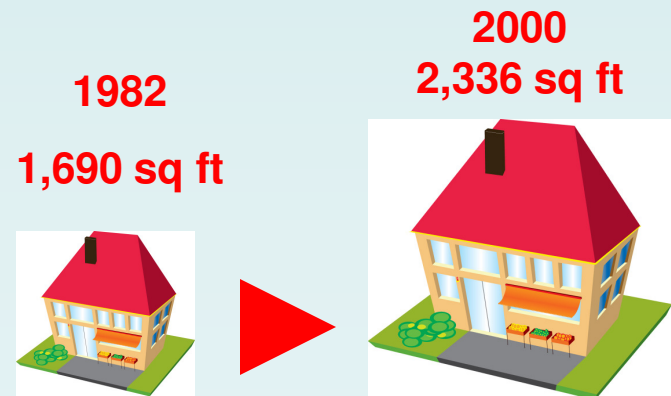
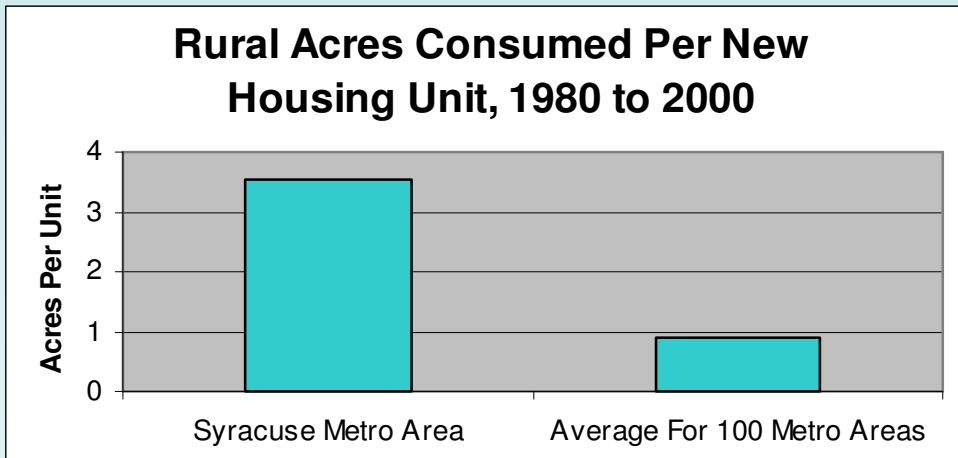
Housing Unit Growth

- 7,000 new units since 2000
- 147 subdivisions
- 2,600 acres
- 160 rural units annually



Housing Unit Growth (continued)

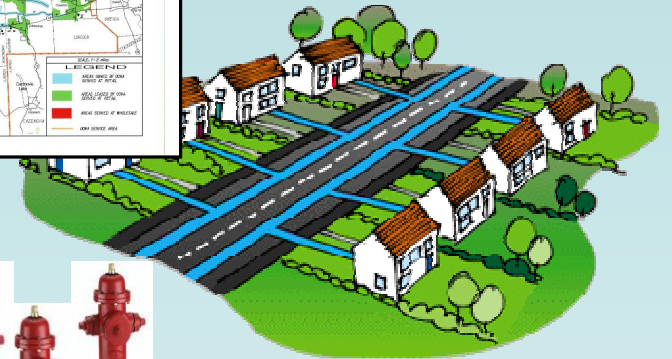
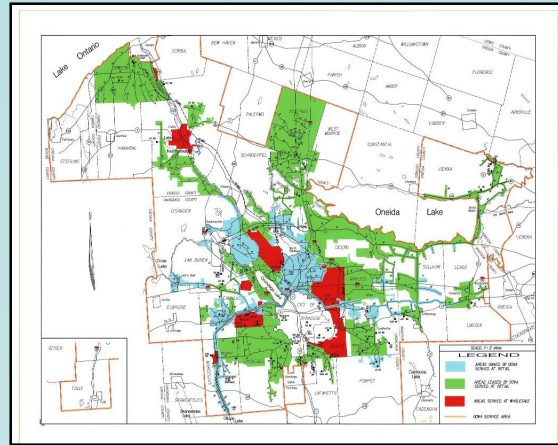
- Home Sizes Up 40%
- Avg. Urban Lot Size = 0.87 ac
Avg. Rural Lot Size = 8.15 ac



Water Infrastructure Expansion

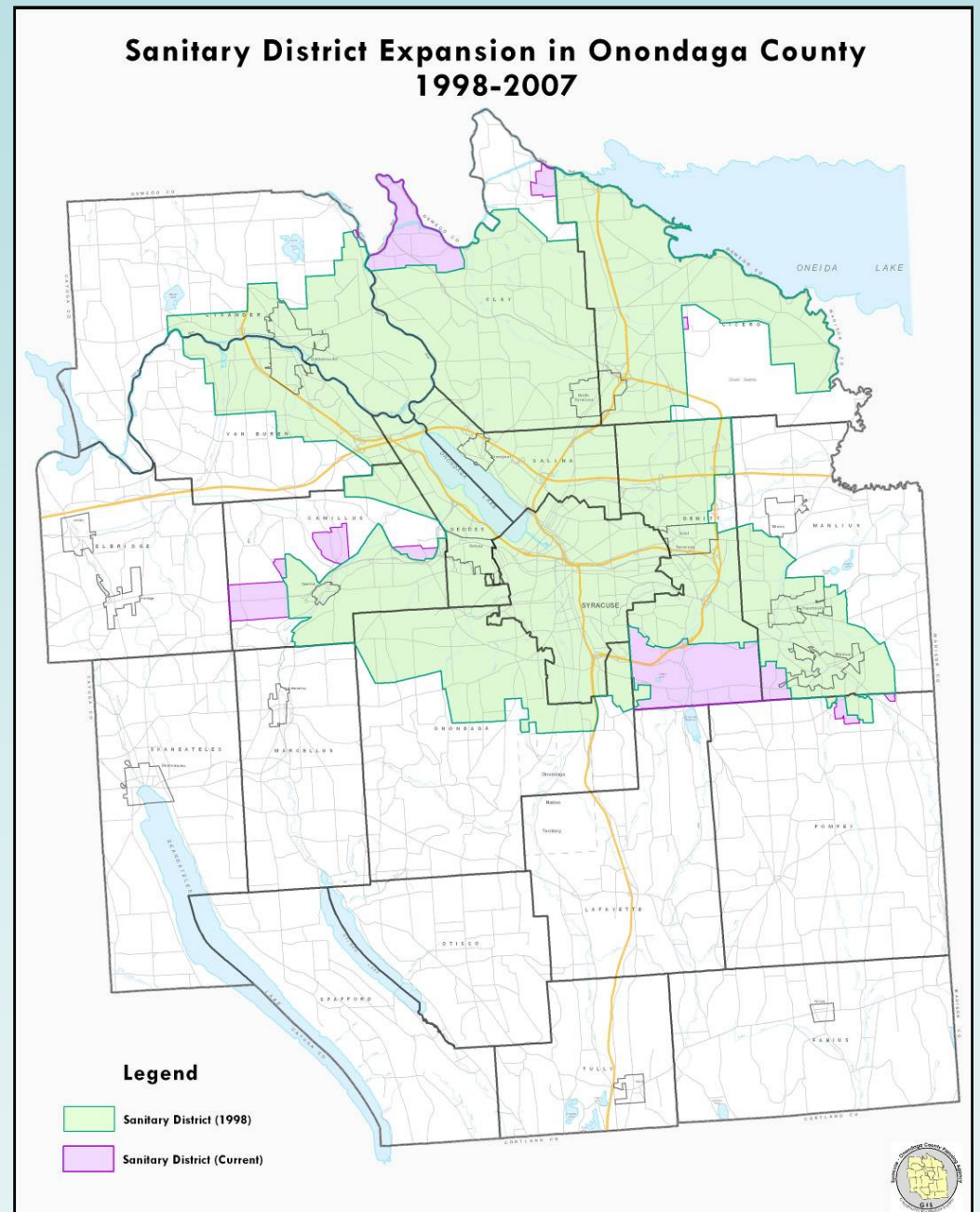
2001-2008

- 290 mi. of new water main
- 1,611 new hydrants
- 13 new storage facilities
- 15 new pumping stations
- **Cost per 1,000 gal up 78%**
- **Annual Water Delivered down 11%**



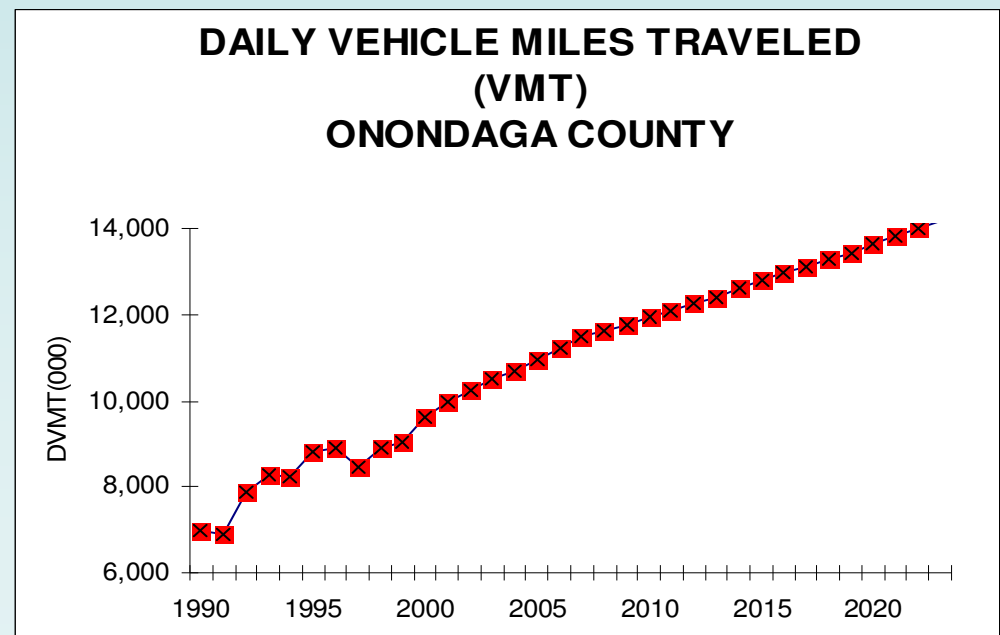
Wastewater and Stormwater Infrastructure

- 57,201 feet of new sewer in 2007
- Added 12,550 acres to Sanitary District since 1998
- Aging Infrastructure, Stormwater mandates, Septic limitations



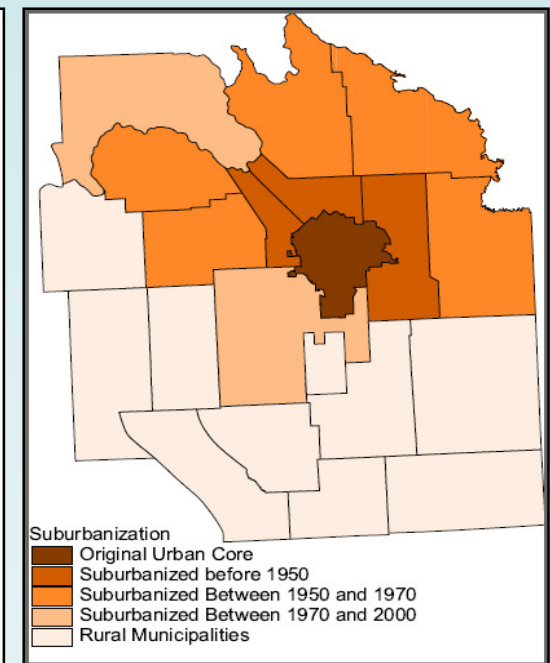
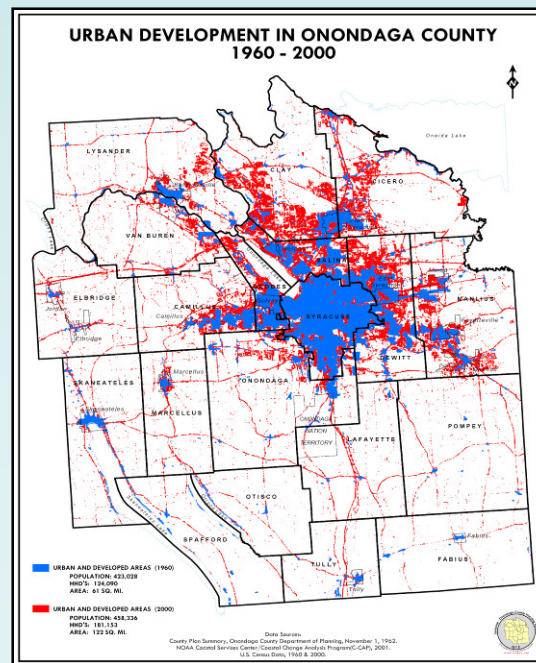
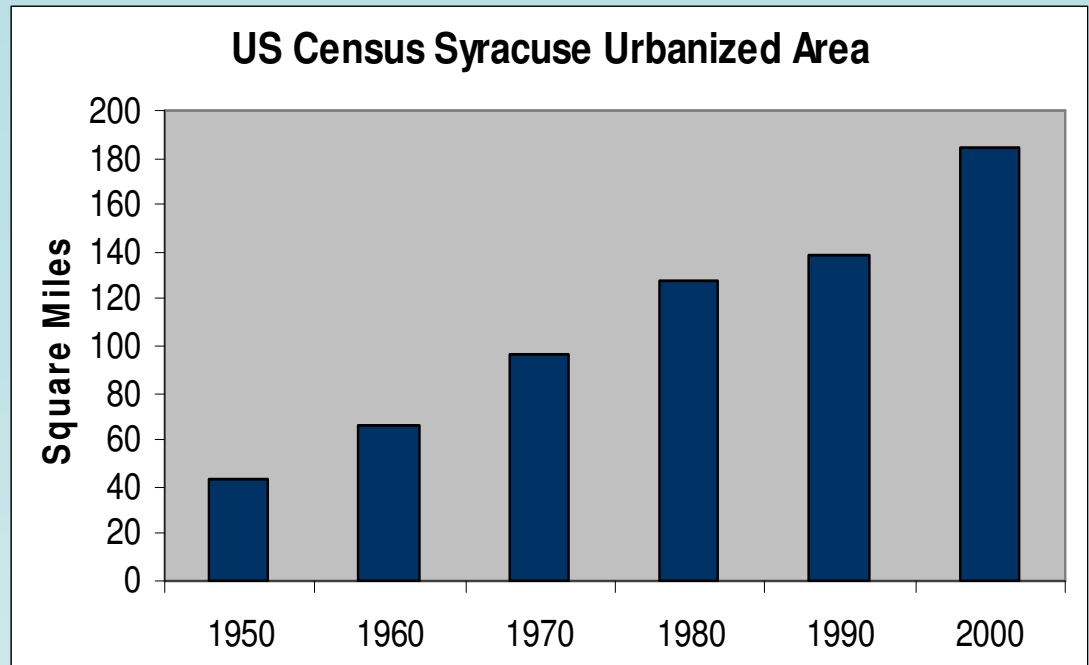
Transportation Infrastructure

- Added 61 Miles of New Road since 2000
- 43% Increase in Daily VMT since 1990
- Average Commute is Now Over 20 Minutes

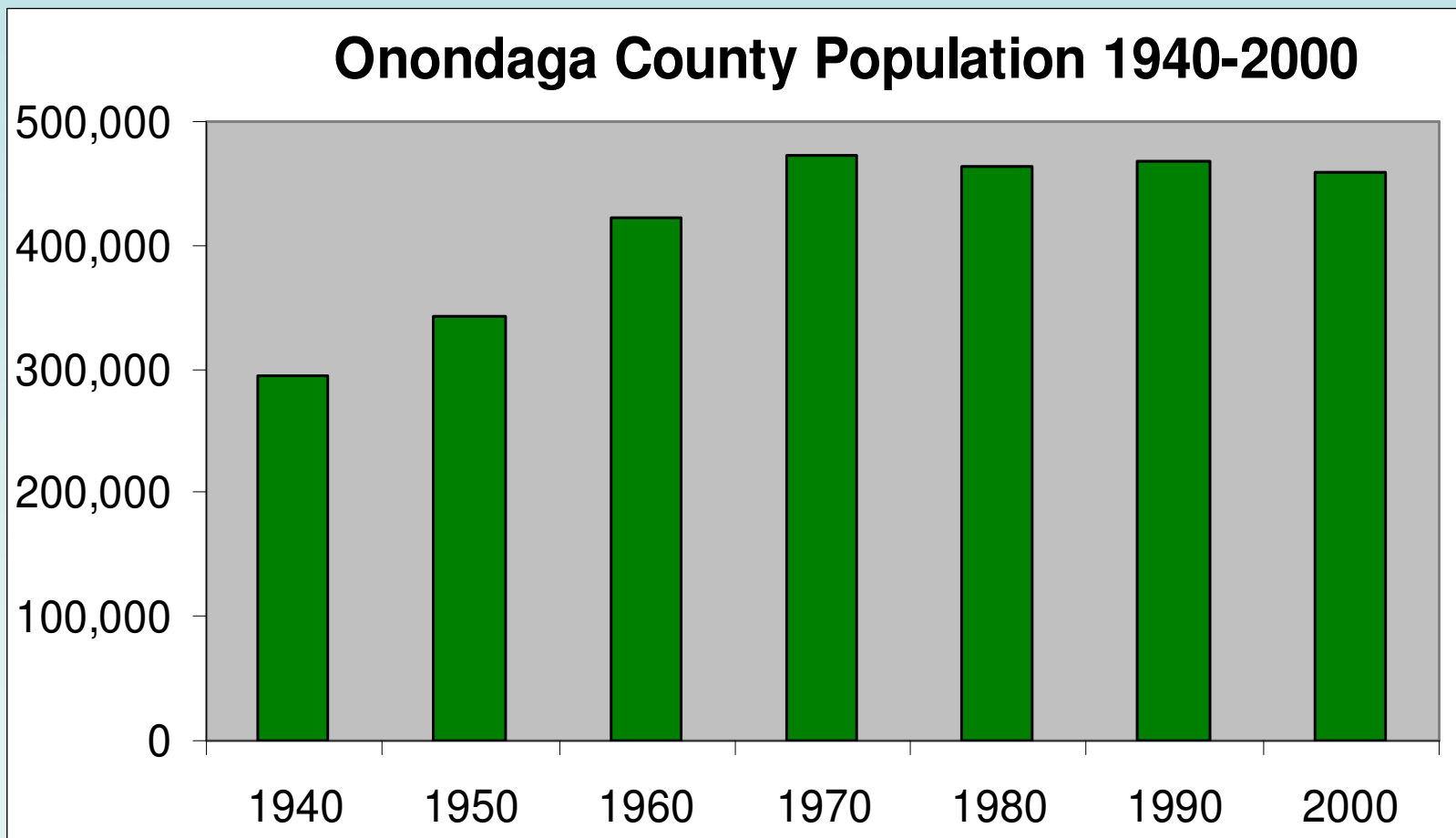


Expansion of Our Urbanized Area

- Urban land increased 92% since 1970
- Increased by 50 square miles in 1990s
- Suburbanization of rural towns



NO Regional Population Growth



Population Trends

City of Syracuse 1980-2000

Population down 50,000

Households down 8,000

Housing Units down 3,600

Towns 1980-2000

Population up 43,000

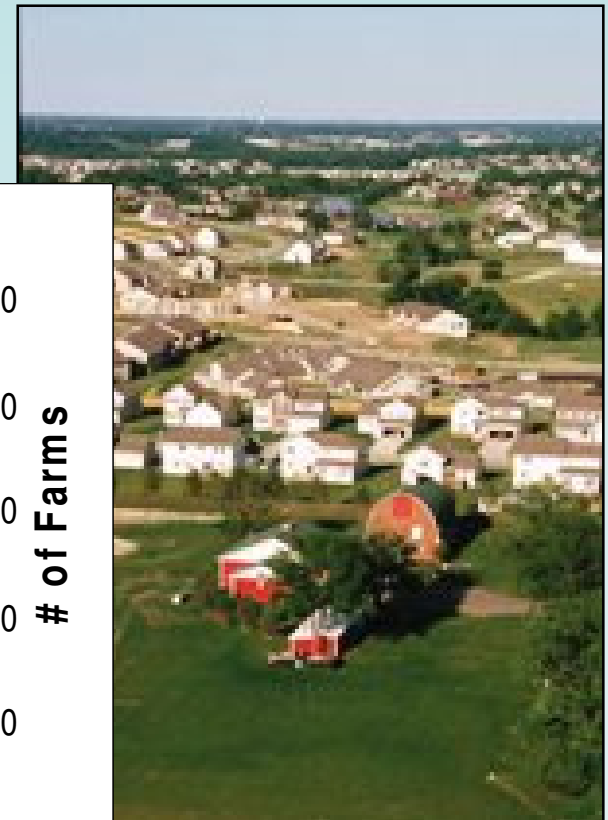
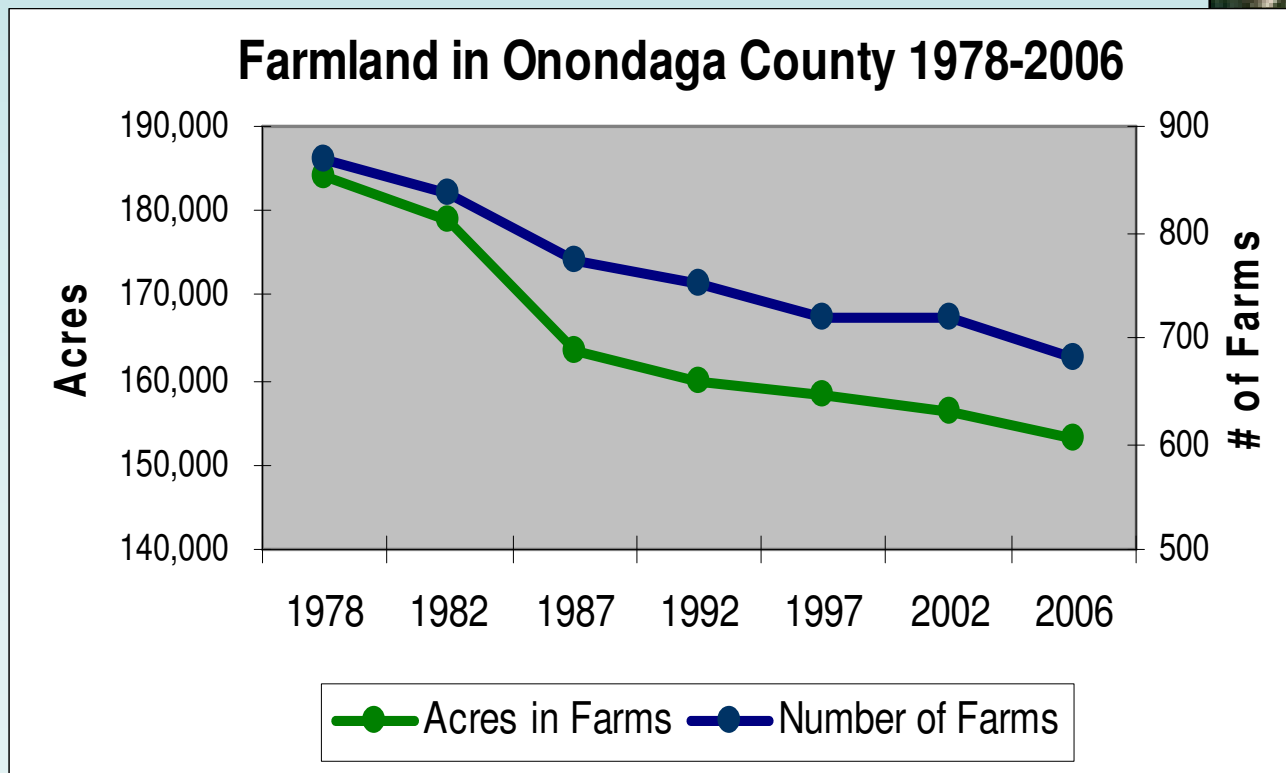
Households up 44,000

Housing Units up 47,000

Continuing Challenges....

The Challenges Are....

- A Reduction in Farmland



The Challenges Are....

- A Reduction in Farmland
- **Inability to Support Mass Transit**

[« BACK TO LATEST NEWS](#)

The following article is part of our archive

Centro plans fare hike, service cuts

...will hold hearings on how to close expected \$5 million bu

January 28, 2009

mez

writer

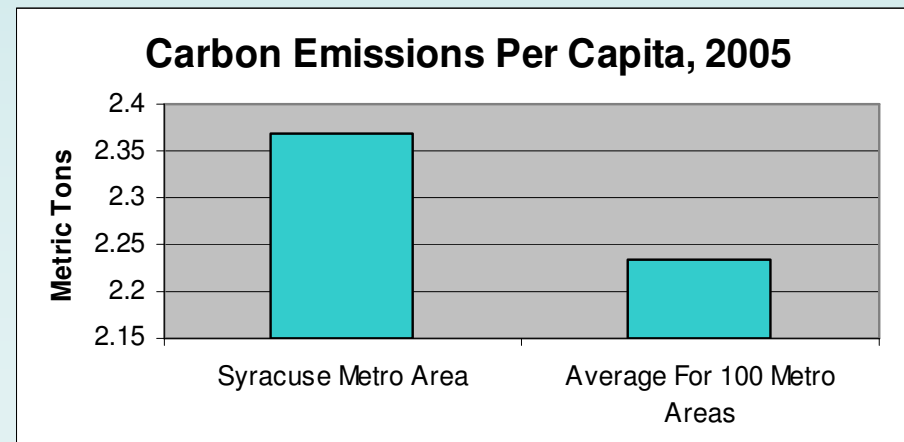
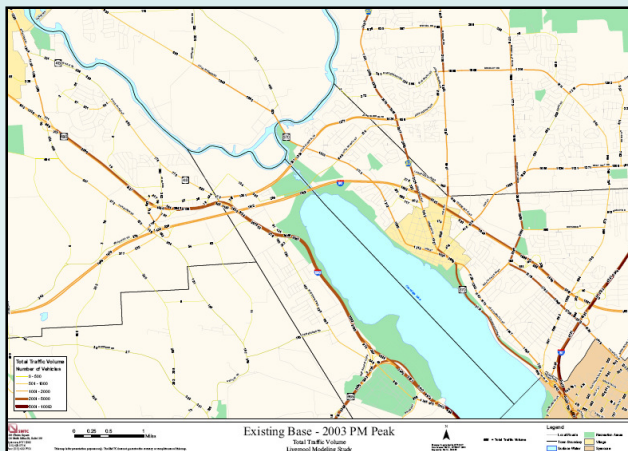
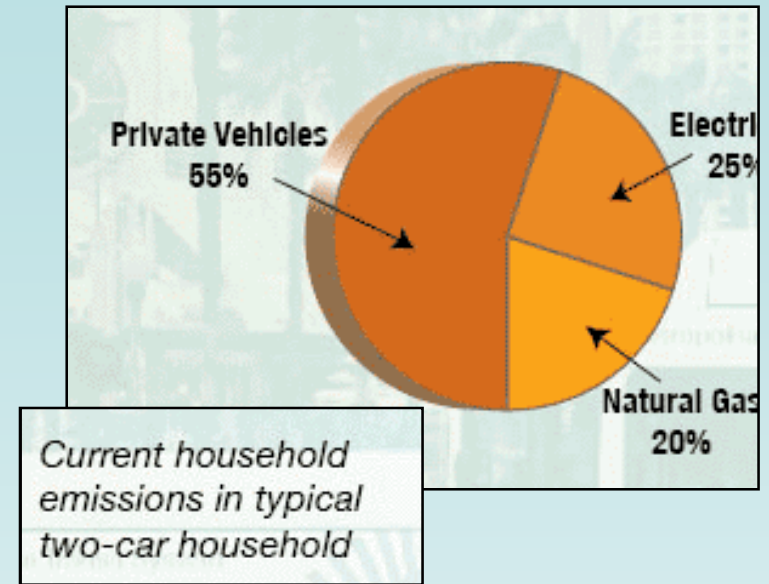
...sing to raise bus fares and
...ected \$5 million shortfall
...uesday.

...o increase the Syracuse b
...50, officials said. Almost
...the proposal, they said



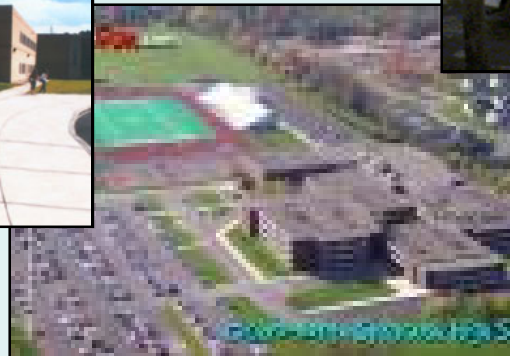
The Challenges Are....

- Reduction in Farmland
- Inability to Support Mass Transit
- **A Larger Carbon Footprint**



The Challenges Are....

- A Reduction in Farmland
- An Inability to Support Mass Transit
- Increased driving and a larger carbon footprint
- **Demand for facilities and public services in new areas**



The Challenges Are....

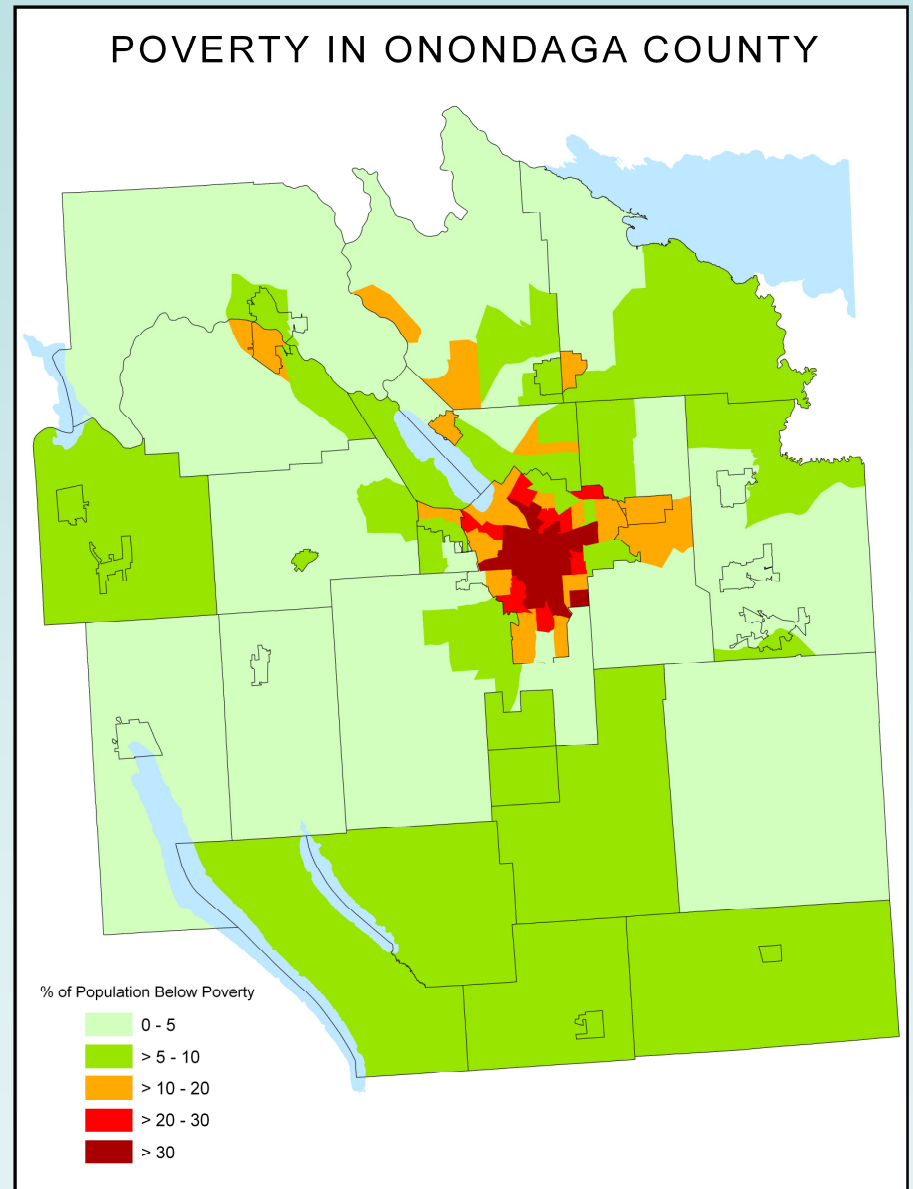
- A Reduction in Farmland
- An Inability to Support Mass Transit
- Increased driving and a larger carbon footprint
- Demand for facilities and public services in new areas
- **Abandoned neighborhoods, buildings and job centers**



The Challenges Are....

- A Reduction in Farmland
- Inability to Support Mass Transit
- Increased Carbon Footprint
- Demand for Services in New Areas
- Abandoned Neighborhoods
- **Concentrations of Poverty**

Individuals Below Poverty	
Syracuse City	25.4%
Onondaga Co. Towns	5.4%



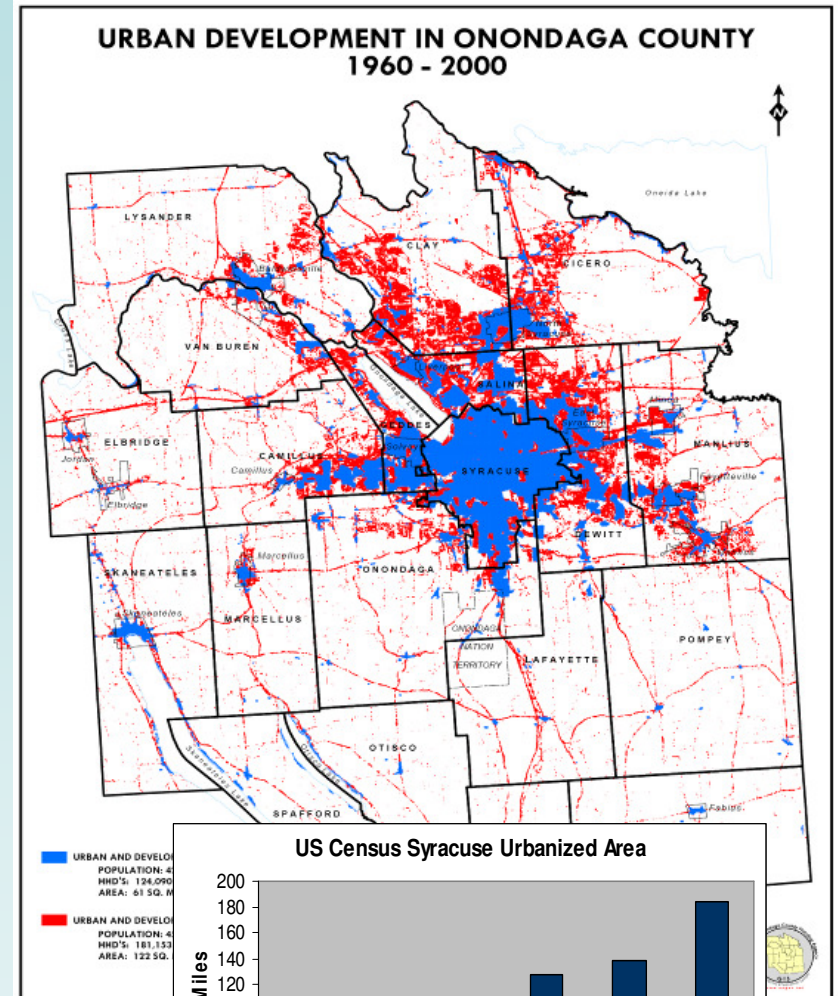
The Challenges Are....

- A Reduction in Farmland
- An Inability to Support Mass Transit
- Increased driving and a larger carbon footprint
- Demand for facilities and public services in new areas
- Abandoned neighborhoods, buildings and job centers
- Concentrations of poverty
- **Economic Competitiveness**



The Challenges Are....

- A Reduction in Farmland
- An Inability to Support Mass Transit
- Increased driving and a larger carbon footprint
- Demand for facilities and public services in new areas
- Abandoned neighborhoods, buildings and job centers
- Concentrations of poverty
- Economic Competiveness
- **Spreading our tax dollars over a larger geographic area**

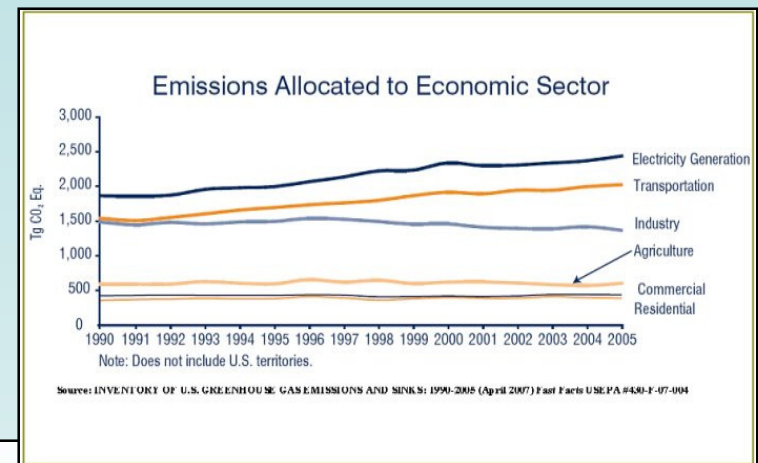
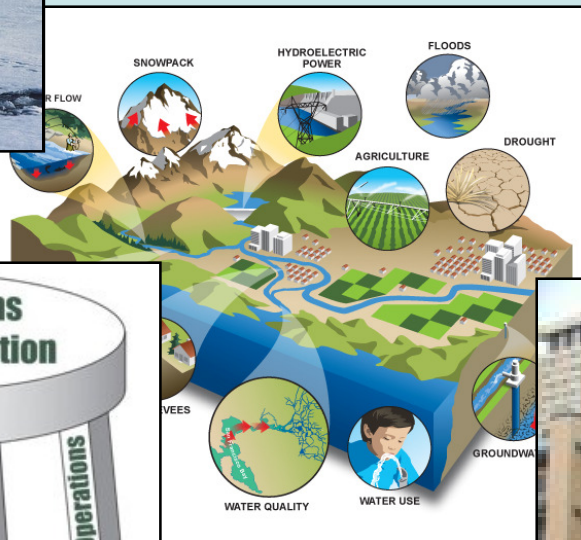


*Some
Other
Trends...*



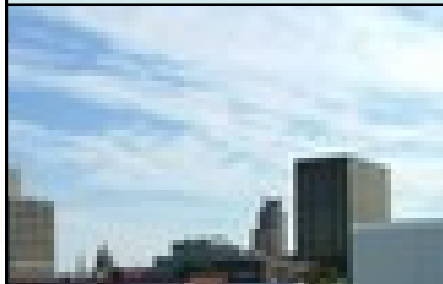
Some Other Trends....

- Climate Change and Reducing Pollution



Some Other Trends....

- **Climate Change and Reducing Pollution**
- **Rising Gas and Energy Prices**



Some Other Trends....

- Climate Change and Reducing Pollution
- Rising Gas and Energy Prices
- Obesity, Public Health, and Walkable Neighborhoods



MRE: breaking news, health, top news

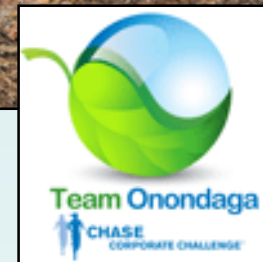
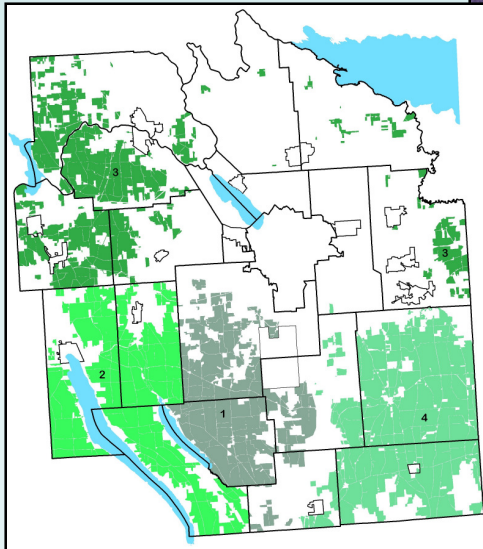
Excelsus report: 43 percent of tested Central New Yorkers have high cholesterol

By James T. Mulder / The Post-Standard
September 16, 2009, 9:08AM



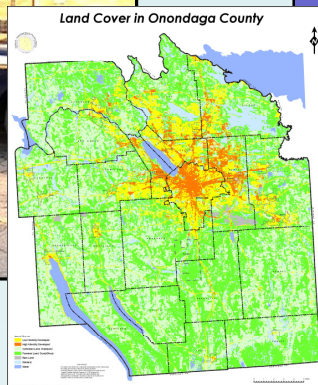
Some Other Trends....

- **Climate Change and Reducing Pollution**
- **Rising Gas and Energy Prices**
- **Obesity, Public, and Walkable Neighborhoods**
- **Protecting Water and Open Space Resources**



Some Other Trends....

- **Climate Change and Reducing Pollution**
- **Rising Gas and Energy Prices**
- **Obesity, Public, and Walkable Neighborhoods**
- **Protecting Water and Open Space Resources**
- **Community Discussion of Government Modernization and Efficiency**

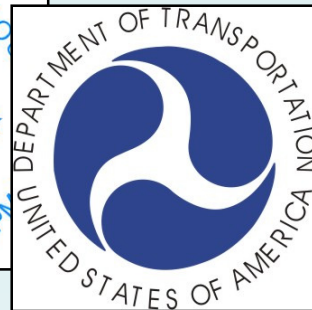


The cover of the "SYRACUSE 20/20" report. It features a purple header with the title "SYRACUSE 20/20" and a logo with the text "SYRACUSE 20/20 A BETTER WAY TO SEE THE ISSUES". Below the header, the text reads "Onvest Onondaga County Quality Community Investment Trust Fund December 2008".

The cover of the "LOCAL GOVERNMENT SHARED SERVICES PROGRESS REPORT 2005-2007". It features the text "NEW YORK STATE DEPARTMENT OF STATE" at the top, followed by "LOCAL GOVERNMENT SHARED SERVICES" and "PROGRESS REPORT 2005-2007". Below the text is a photograph of several hands stacked together. At the bottom, it lists "David A. Paterson, Governor" and "Lorraine A. Cerio-Vogel, Secretary of State".

Some Other Trends....

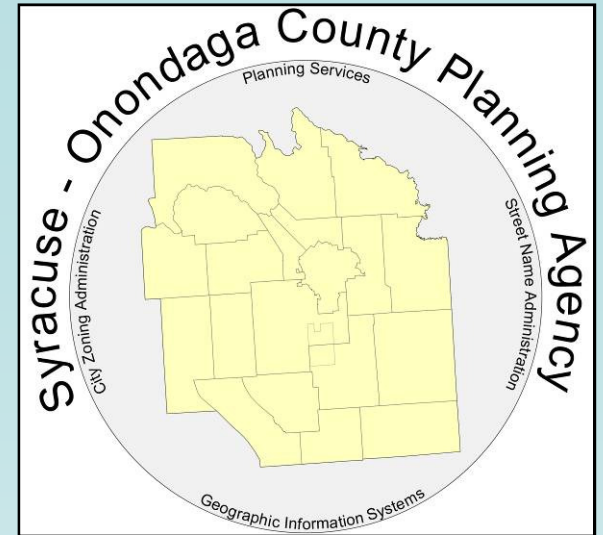
- **Climate Change and Reducing Pollution**
- **Rising Gas and Energy Prices**
- **Obesity, Public, and Walkable Neighborhoods**
- **Protecting Water and Open Space Resources**
- **Community Discussion of Government Modernization and Efficiency**
- **Smart Growth Legislation**



The New County Land Use Plan

- **Define good growth in term of Sustainability**
- **Advocate for Smart Growth**
- **Reinvest in existing communities**
- **Develop compact, walkable mixed-use neighborhoods**
- **Provide transportation options – transit, complete streets**
- **Discourage expansion of existing infrastructure**
- **Encourage use of green infrastructure**
- **Protect open space, farmland and water resources**
- **Promote energy efficiency and green building**
- **Discuss government modernization and efficiency**

Syracuse-Onondaga County Planning Agency



Don Jordan, SOCPA Director

donjordan@ongov.net

Megan Costa, Planning Services Mgr.

megancosta@ongov.net

(315)435-2611

www.ongov.net/planning