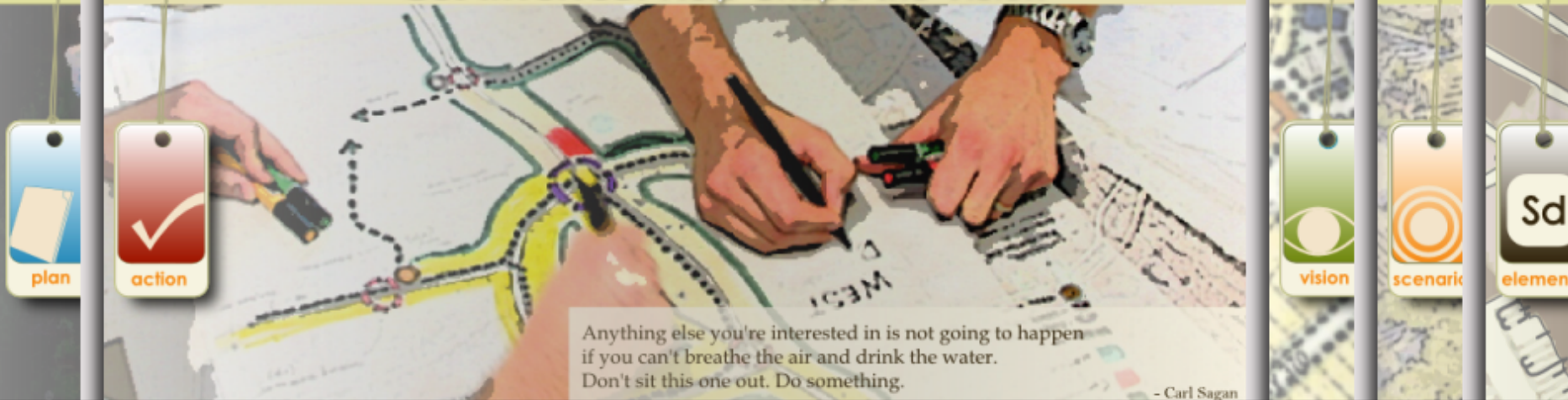


## Get Involved: Help Shape the Vision



# Onondaga County Sustainable Development Plan

Onondaga County Planning Federation  
Annual Planning Symposium - June 7, 2012



# Sustainable Development Plan

## Agenda

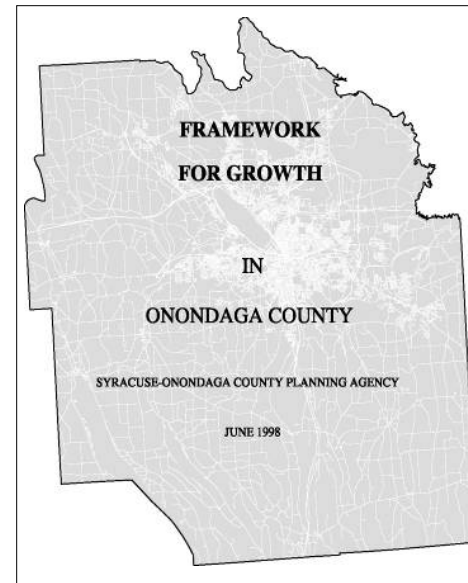
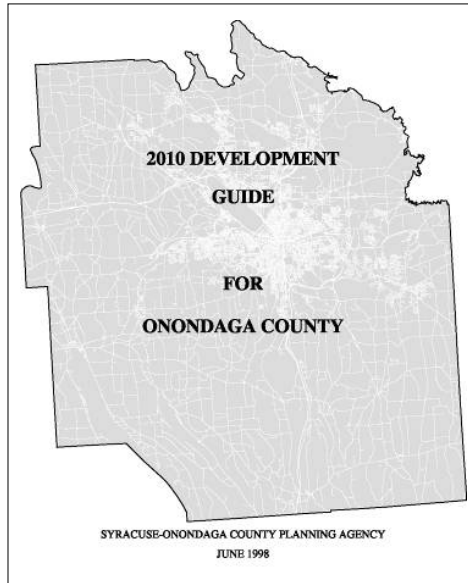
- > **Why a new plan?**
- > **Introduction to the Sustainable Development Plan**
  - > Vision
  - > Scenarios
  - > Elements
  - > Plan
  - > Action
- > **Tour of Plan website - [future.ongov.net](http://future.ongov.net)**
- > **Steering Committee perspectives**
- > **Panel Q & A**

Why a new plan?



# Sustainable Development Plan

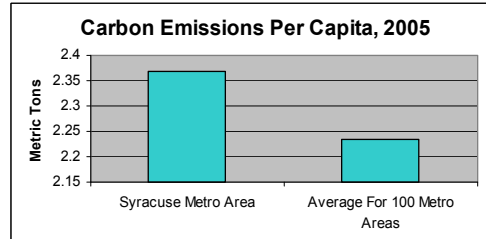
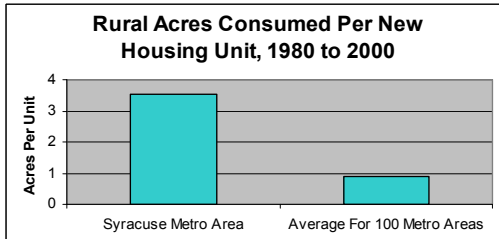
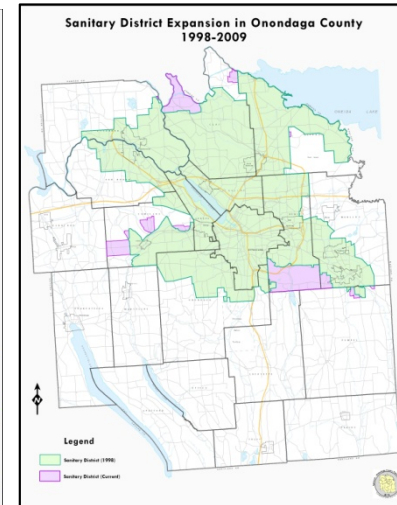
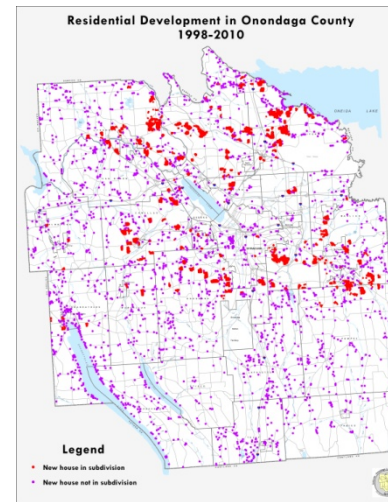
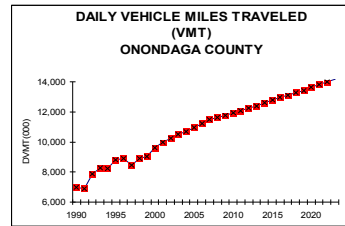
## 2010 Plan





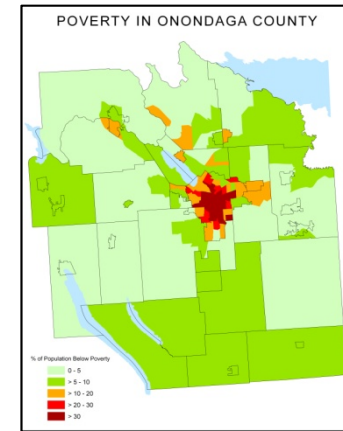
## Trends Research

- > Tracked housing, infrastructure, & demographics
- > Illustrated trends and inter-relationships



**City of Syracuse 1970-2000**

Population down 50,000  
Households down 8,000  
Housing Units down 3,600



**Towns 1970-2000**

Population up 35,000  
Households up 44,000  
Housing Units up 47,000

**Farmlands & Forests**

33 percent of Onondaga County was agricultural land in 2005.

\$137 mil value of farm sales in Onondaga County (2007)

5,795 acres of farmland were lost to development from 2002 to 2007.

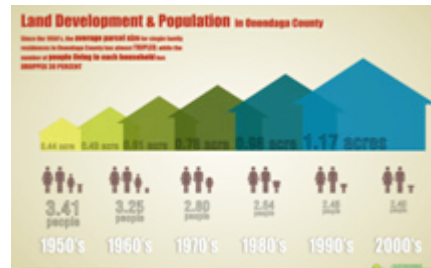
8,071 acres of prime farmland soils lost every year since the 1950's.

33 percent of Onondaga County was forestland in 2005.

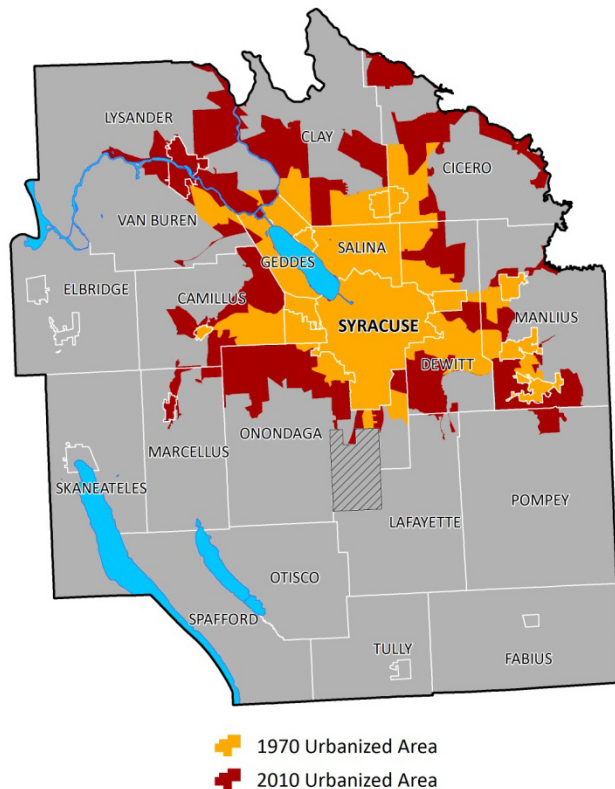
\$850 M value of recreational services provided by trees in Syracuse annually.

1,001 acres of forestland were lost to development from 1992 to 2005.

78% percent of forest lands that are less than 2.5 acres.

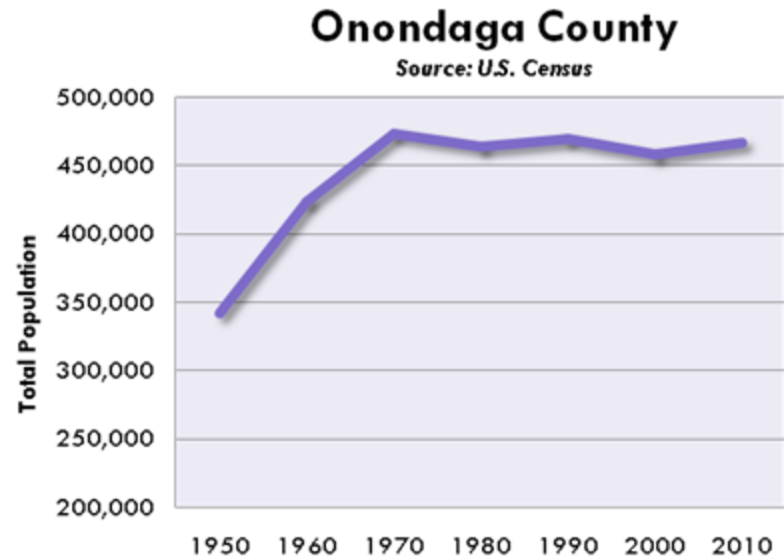


## Trends Research



**1970 Urbanized Land Area – 96 sq. miles**  
**2010 Urbanized Land Area\* – 186 sq. miles**

\* Onondaga County only



**1970 Population – 472,835**  
**2010 Population – 467,026**



# Sustainable Development Plan

## Trends Research

- > We've got sprawl –  
*and it's worse here than other places*
- > Added infrastructure & urban services without added population or tax base –  
*that's called sprawl without growth*
- > Trends are taking us in the wrong direction –  
*fiscally, environmentally, and socially*

## Community Planning & Transportation Survey

- > Test planning concepts
- > Broad audience
- > ~1,000 responses
- > Statistically valid
- > Strong support for Smart Growth



## Community Planning & Transportation Survey

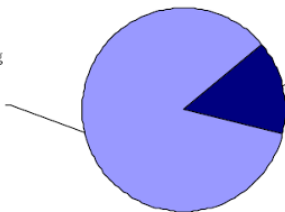
- > 85% Support for Smart Growth Strategy
- > 77% said Develop in Existing Communities
- > Support For Regional Planning
- > Help Struggling Communities
- > Natural Areas, Farmland, Air/Water Quality
- > Transportation Choices

Figure 5: Preferred Scenario for Future Development

Please tell us which scenario best represents how you would like to see future development take place in Onondaga County.

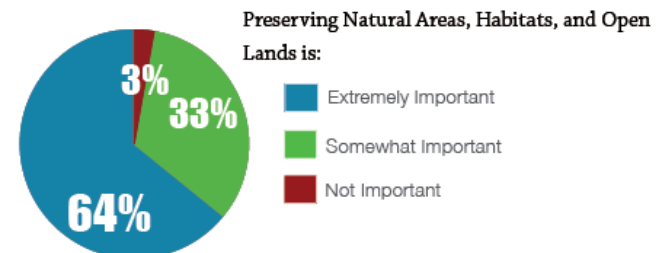
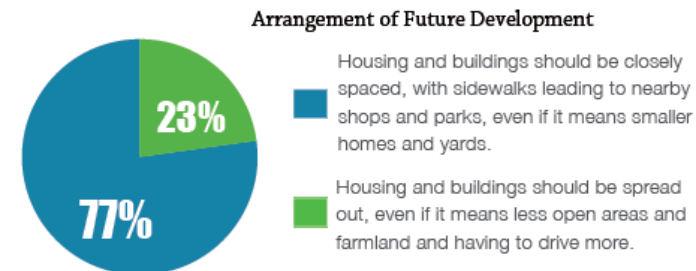
Future growth will occur mostly in existing communities, with lots of open space mainly in rural areas. Government spending will include investment in restoring older buildings, expanding bus service, sidewalks and bike paths, and fixing aging infrastructure (i.e., sewers, waterlines, roads and bridges). Spending on new infrastructure will be limited.

85%



Future growth will follow the existing trend of new development in mostly suburban areas. Government spending will include road widening, rural access to public water and sewers, and expanding fire/police and schools. Investment in existing communities, farmland preservation, and public transit will be limited

15%



A hundred years after we are gone and forgotten, those who never heard of us will be living with the results of our actions.  
— Oliver Wendell Holmes

# Vision







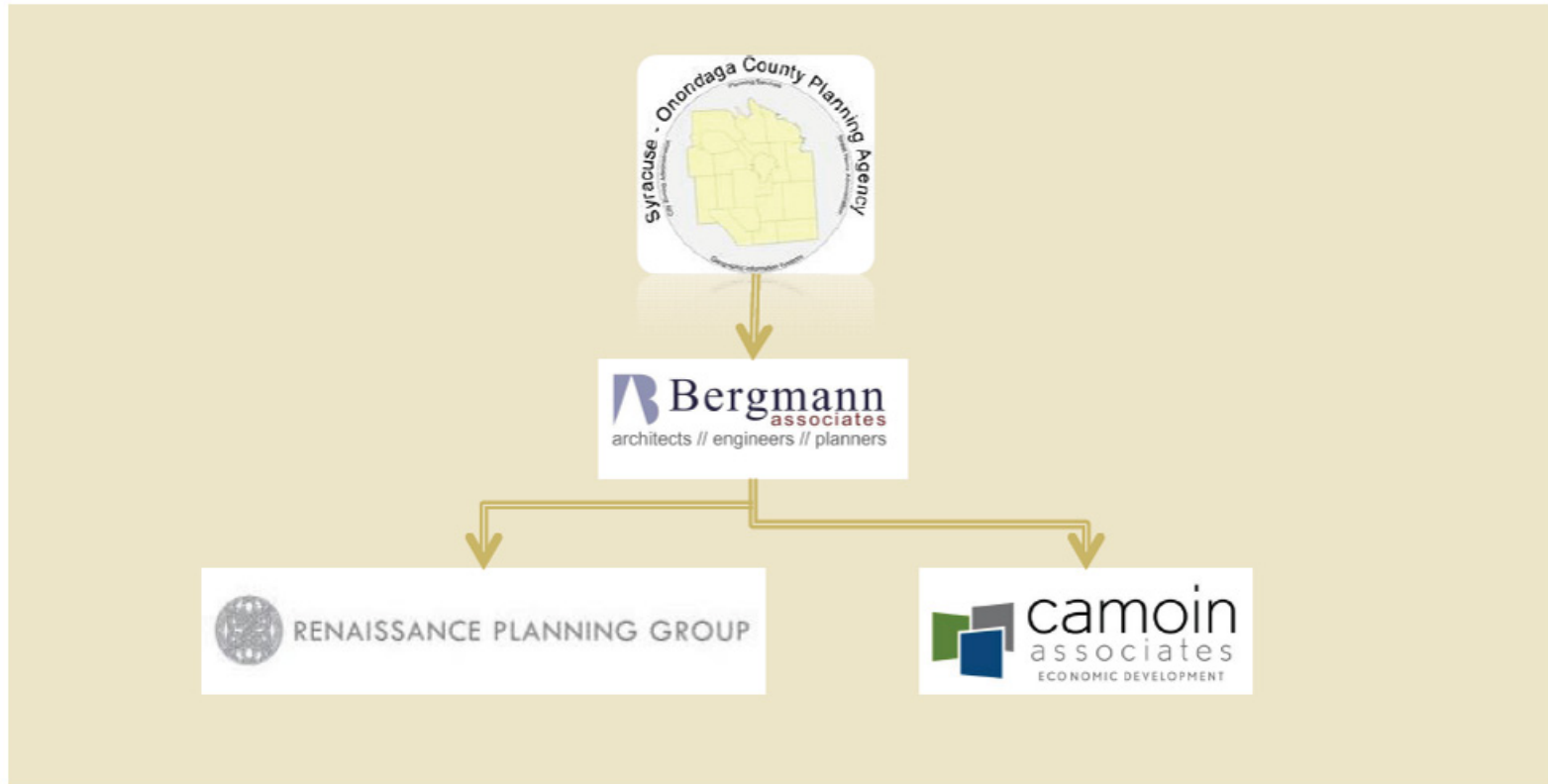
# Sustainable Development Plan



## Steering Committee

**David Bottar**, CNY Regional Planning & Development Board  
**David Coburn**, Onondaga County Office of the Environment  
**Gordon Cuffy**, Onondaga County Law Department  
**James D'Agostino**, Syracuse Metropolitan Transportation Council  
**Brian Donnelly**, Onondaga County Department of Transportation  
**Angela Douglas**, Bridges Out of Poverty  
**Richard Hawks**, SUNY ESF  
**Charlotte Holstein**, FOCUS Greater Syracuse  
**Andrew Maxwell**, City of Syracuse Bureau of Planning & Sustainability  
**Matthew Millea**, Onondaga County Office of the County Executive  
**Douglas Morris**, Onondaga County Planning Board  
**Dr. Cornelius Murphy, Jr.**, SUNY ESF  
**Mary Beth Primo**, Onondaga County Department of Economic Development  
**Hon. Kathleen Rapp**, Onondaga County Legislature  
**Hon. James Rhinehart**, Onondaga County Legislature  
**A. Thomas Rhoads**, Onondaga County Department of Water Environment Protection  
**Hon. Terri Roney**, Supervisors Association - Town of Skaneateles Supervisor  
**I. Holly Rosenthal**, Metropolitan Water Board  
**James Rowley**, Onondaga County Department of Management & Budget  
**Hon. Joseph Saraceni**, Mayors Association - Village of Baldwinsville Mayor  
**Vito Sciscioli**, Syracuse 20/20  
**Robert Simpson**, CenterState CEO  
**Mary Thompson**, Home Builders & Remodelers Association of CNY

## Project Team





## Project Timeline

### Plan Outreach

- 1** Envision Our Future Public Workshop
- 2** Municipal Meetings
- 3** Choose Our Future Public Open Houses
- 4** Focus Group Meetings
- 5** Character Area Mapping Workshop
- 6** Present Draft *Sustainable Development Plan*



### Plan Components

- A** Website Development
- B** Analyze Existing Conditions & Trends
- C** Scenario Modeling & Fiscal Impact Analysis
- D** Begin Virtual Open House
- E** Identify Elements of Sustainable Development
- F** Prepare Element Reports
- G** Research Policies & Practices
- H** Develop Action Plan
- I** Define & Map Character Areas
- J** Complete Draft *Sustainable Development Plan*

## Website

- ❑ Interactive format
- ❑ On-line Events
- ❑ 1-Minute Surveys
- ❑ Presentations/Reports
- ❑ Public events
- ❑ News & Announcements
- ❑ Best Practices
- ❑ Comment
- ❑ Agency / Document links



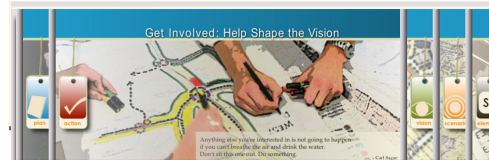
### workshop presentations

- Envision Our Future Main Presentation**
- Envision Our Future Economic Presentation**
- Envision Our Future Environmental Presentation**
- Envision Our Future Social Presentation**

### workshop gallery



### themes

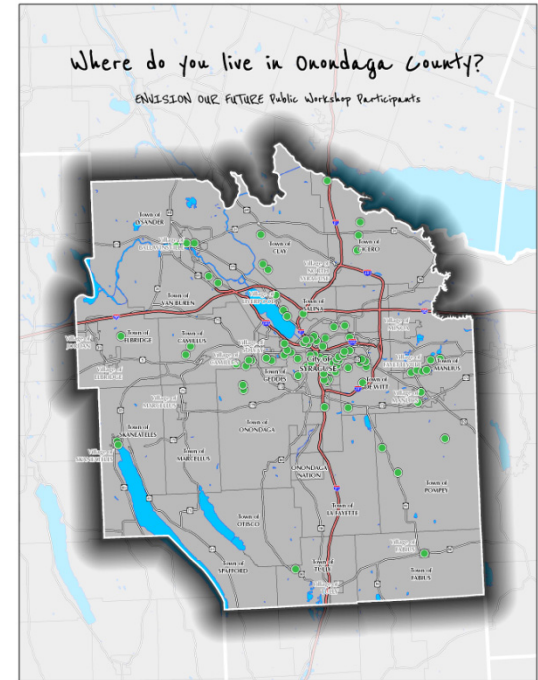


### announcements, etc

- **Choose Our Future Virtual Open House**
- **Choose Our Future Open Houses**
- **Take Our 14-Minute Survey**
- **Something New in Syracuse**
- **Governor Cuomo Signs Land Bank Legislation**
- **EPA Green Announcement**
- **Contact Us & E-Newsletter Sign-up**

## *Envision Our Future* Public Workshop

- > 100+ attendees
- > Webinar option
- > Broad geographic base
- > 3 breakout groups & voting



**ENVISION OUR FUTURE**  
Public Workshop  
for the Onondaga County  
Sustainable Development Plan  
TUESDAY, JUNE 28, 2011 6:30 – 8:30 PM

Onondaga County Sustainable Development Plan  
[future.ongov.net](http://future.ongov.net)

The Sustainable Development Plan will engage citizens in creating a vision for Onondaga County for future generations, define what sustainability means for our communities and our region, and work together to advance sustainable development – as defined by you, the citizens of Onondaga County.

Please join us for our first public meeting!

**ONLINE LIVE WEBINAR:**  
Go to <http://future.ongov.net>  
Click on Webinar to watch the presentation, hear the dialogue, and submit questions and comments in real time

**IN PERSON:**  
Convention Center at Occazer  
800 South State Street, Syracuse, NY  
(free parking in the surface lot)

*Attendees at the Occazer Workshop will be entered to win a free Rain Barrel, compliments of the Onondaga County Save the Rain program!*  
For more information, go to [future.ongov.net](http://future.ongov.net), or contact the Syracuse-Onondaga County Planning Agency at 435-2611.

**future.ongov.net**



## Envision Our Future

### Public Workshop

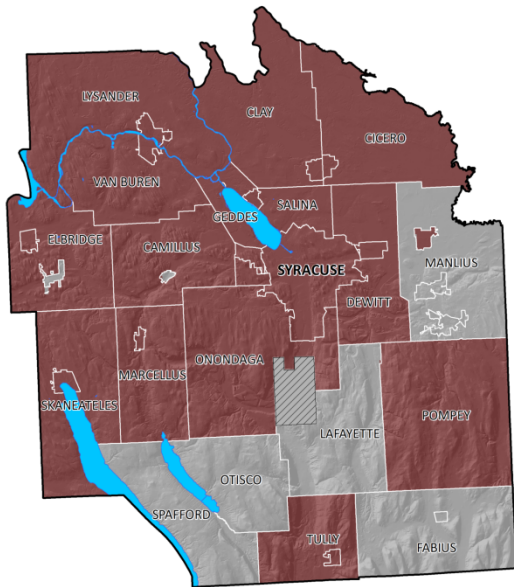


#### Top Comments:

- > Control Sprawl
- > Healthy Urban Core
- > Energy - efficiency/renewables, etc.
- > Consolidate/Coordinate Governments
- > Improve Bike/Trail Systems
- > Support Farms/Open Space

Environment: Top 5 Comments	Votes
Limit sprawling development patterns	17
Improve the bike/path system in the County	15
Clean Onondaga Lake and keep it as undeveloped as possible	13
Bike paths and sidewalks	10
Reduce use of pesticides and fertilizers/compost/use native plants	9
Restore and protect natural resources	9
Clean Onondaga Lake, restore its ecological functions, restore its wetlands, and create(?) a setback trail	9
Economy: Top 5 Comments	Votes
Control sprawl	31
Control sprawl (reuse land instead of spreading out)	14
Develop/facilitate use of renewable energy	12
Master plan to re-densify City of Syracuse	11
Facilitate renewable energy (does the County have authority?)	7
Social: Top 5 Comments	Votes
Recognize the role of a healthy core in attracting people back to the City (schools, housing choice)	21
Address government fragmentation and act more like a cohesive region	8
How do we create equitable school districts (suburbs vs the City)?	6
Support education and youth employment (Say Yes!, youth employment opps)	5
Poverty's influence on schools, housing and transit; interrelationships between poverty and regional success and sustainability	5
Build a healthier food system and its contribution towards a more attractive region	5
Support Say Yes!	3

## Municipal Interviews



> 25 of 35 municipalities

villages play an important role

sales tax formula

outdated zoning

**must increase tax base**

aging infrastructure

smart growth

open space and trails

keep rural areas rural

competition

hydrofracking

property tax cap

stormwater regulations

I-81

**strained municipal budgets**

no planning

limited communication

lack of housing diversity

unfunded mandates



# Sustainable Development Plan



## Focus Group Meetings

- > Society & Community Development
- > Open Space & Ecosystems
- > Government Finance
- > Water Resources
- > Economic Development
- > Agriculture & Rural Communities
- > Buildings & Neighborhoods
- > Energy
- > Mobility & Transportation

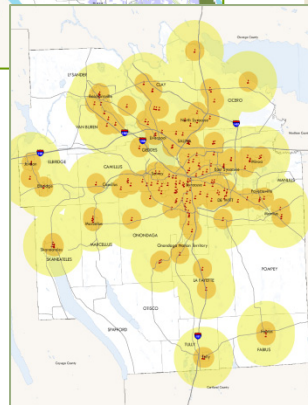
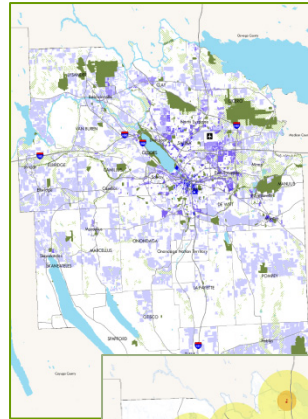
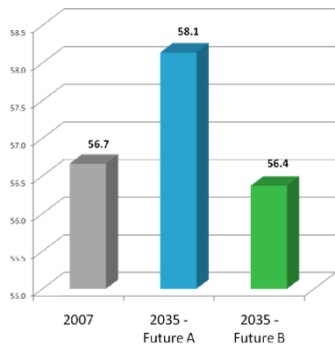


# Scenarios



## Scenario Modeling

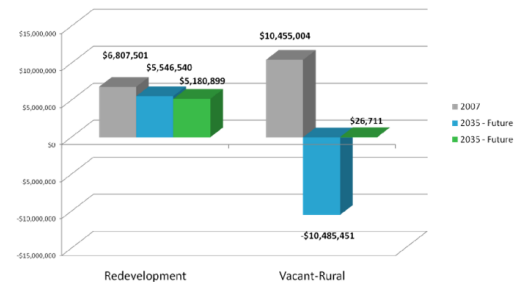
Metric Tons of CO2 Emissions from Residential Electricity and Work Travel Per Capita Per Day



	2007	Future A	Future B
Onondaga County Population	458,485	442,977	448,514
Onondaga County Employment	252,455	279,246	279,301

Topic	Indicator	Measure
Infrastructure & Land Use	Access to Multimodal Facilities	Population and Jobs Proximate to Transit, Trails, and Walkable Areas
Infrastructure & Land Use	Vehicle Miles of Travel	VMT Total and Per Capita
Infrastructure & Land Use	Access to Jobs	Worker Access to Jobs within Proximity to Housing
Tax & Fiscal Policy	Tax Base	Fiscal impact on City and Town services and Schools
Farmland & Open Space Preservation	Rural Acreage Preserved	Amount of Rural/Ag Land, and Natural Areas

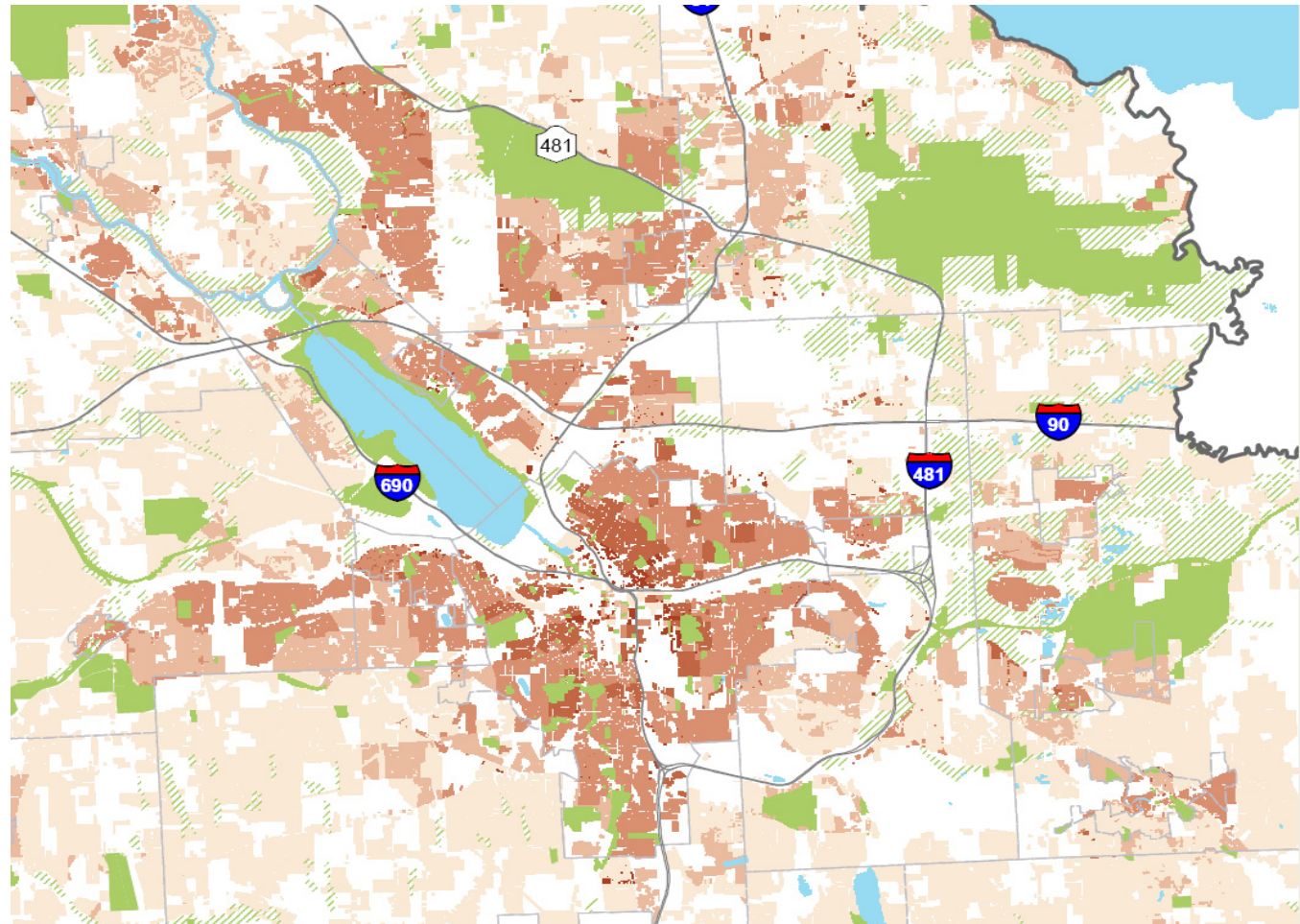
Net Fiscal Impact of Development by Area





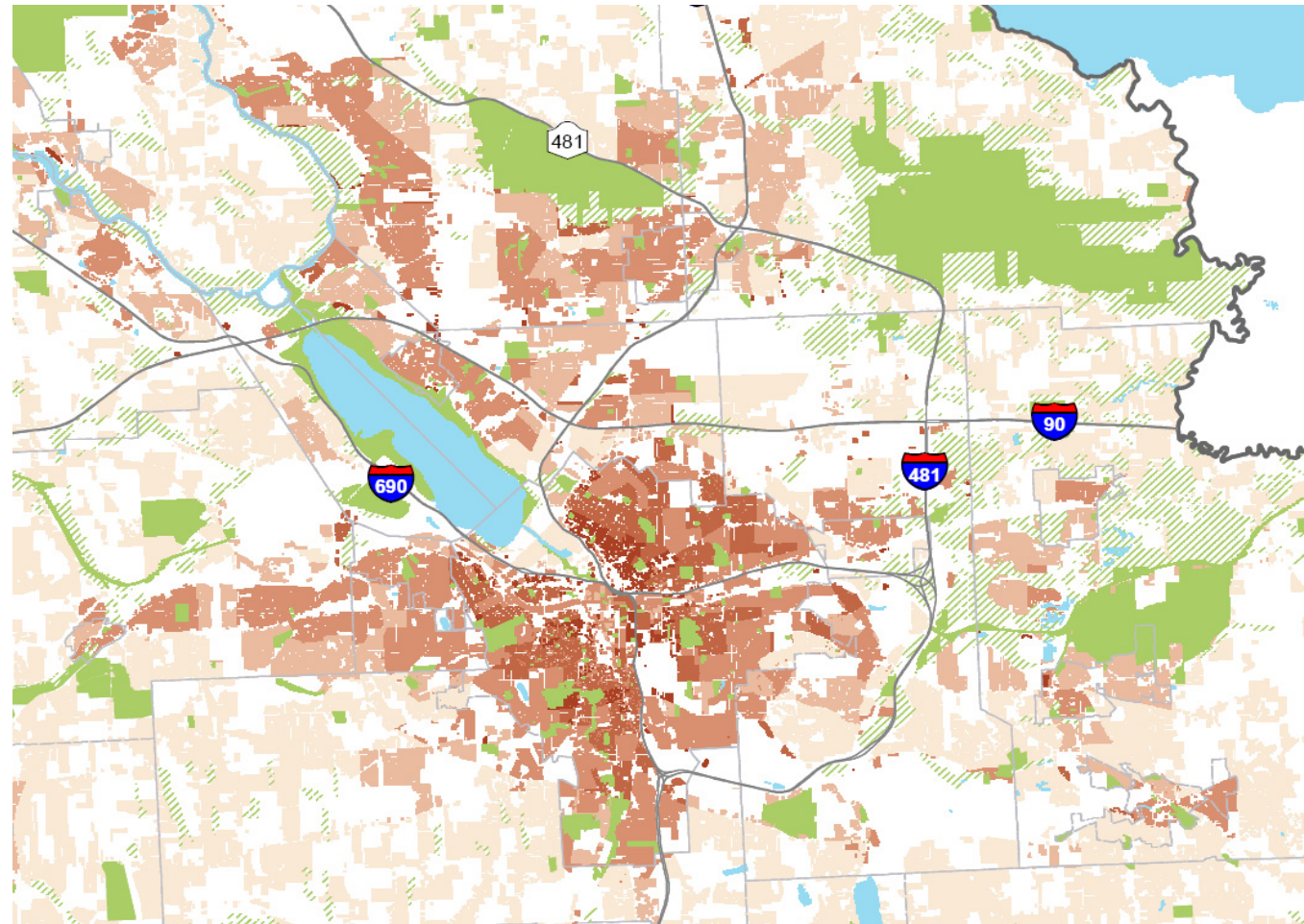
## Scenario Modeling

## 2035 Trend Scenario



## Scenario Modeling

## 2035 Smart Growth Scenario





## Scenario Modeling - Findings



17,500

fewer acres of  
farmland and open  
space lost to  
development



6,300

more households  
supporting the  
existing public  
sewer system



12,500

more households in close  
proximity to assets such  
as libraries, parks, schools  
& grocery stores



30

million fewer  
miles driven  
to work  
each year



8,300

more households  
living in highly  
walkable  
neighborhoods



\$21

million more in  
tax benefits for  
municipalities in  
Onondaga County

## Choose Our Future Public Open Houses

- > 4 Locations
  - > Downtown (Federation Conference)
  - > Marcellus Park
  - > Onondaga Lake Park
  - > Manlius Swan Pond
  
- > Virtual Open House on *future.ongov.net*


SAVE THE DATE!  
CHOOSE OUR FUTURE Open Houses

<b>August 18</b>	<b>The Oncenter</b> Thursday, August 18, 2011 3:00 PM to 7:00 PM Syracuse, NY
<b>August 22</b>	<b>Onondaga Lake Park</b> (next to the Salt Museum) Monday, August 22, 2011 3:00 PM to 7:00 PM Liverpool, NY
<b>August 23</b>	<b>Marcellus Town Park</b> Tuesday, August 23, 2011 3:00 PM to 7:00 PM Marcellus, NY
<b>August 24</b>	<b>Manlius Village Centre</b> (next to Swan Pond) Wednesday, August 24, 2011 3:00 PM to 7:00 PM Manlius, NY



## Choose Our Future Public Open Houses

- > Overwhelming (nearly 90%) Support for Smart Growth Indicators & Overall Smart Growth Scenario!



### CHOOSE OUR FUTURE Ballot

		Current Trends	Smart Growth			Current Trends	Smart Growth
Infrastructure & Land Use				Economic Development & Revitalization			
Access to multi-modal facilities:	<input type="checkbox"/>	<input type="checkbox"/>	<input type="checkbox"/>	Development opportunity:	<input type="checkbox"/>	<input type="checkbox"/>	<input type="checkbox"/>
Vehicle miles of travel:	<input type="checkbox"/>	<input type="checkbox"/>	<input type="checkbox"/>	Livability			
Access to jobs:	<input type="checkbox"/>	<input type="checkbox"/>	<input type="checkbox"/>	Accessibility to community assets:	<input type="checkbox"/>	<input type="checkbox"/>	<input type="checkbox"/>
Open Space & Farmlands				Persons & jobs in proximity to assets:	<input type="checkbox"/>	<input type="checkbox"/>	<input type="checkbox"/>
Rural acreage preserved:	<input type="checkbox"/>	<input type="checkbox"/>	<input type="checkbox"/>	Tax & Fiscal Policy			
Housing				Tax base:	<input type="checkbox"/>	<input type="checkbox"/>	<input type="checkbox"/>
Housing diversity:	<input type="checkbox"/>	<input type="checkbox"/>	<input type="checkbox"/>	Intermunicipal Planning			
Water Resources & Green Infrastructure				Municipal area and population:	<input type="checkbox"/>	<input type="checkbox"/>	<input type="checkbox"/>
Water use:	<input type="checkbox"/>	<input type="checkbox"/>	<input type="checkbox"/>	Intermunicipal coordination:	<input type="checkbox"/>	<input type="checkbox"/>	<input type="checkbox"/>
Water quality:	<input type="checkbox"/>	<input type="checkbox"/>	<input type="checkbox"/>	Overall Preferred Scenario	<input type="checkbox"/>	<input type="checkbox"/>	<input type="checkbox"/>
Energy							
Energy consumption:	<input type="checkbox"/>	<input type="checkbox"/>	<input type="checkbox"/>				
Greenhouse gas emissions:	<input type="checkbox"/>	<input type="checkbox"/>	<input type="checkbox"/>				

\*Please circle the 5 individual factors most important to you

Your City/Town/Village of residence: \_\_\_\_\_

Additional Comments: \_\_\_\_\_

\_\_\_\_\_

\_\_\_\_\_

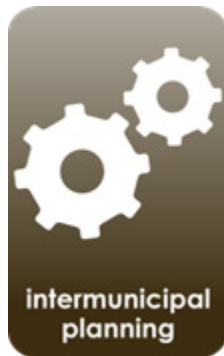
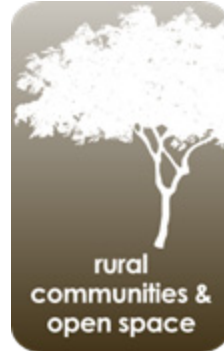
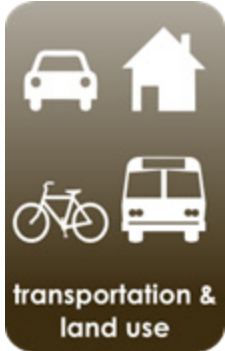
Please visit <http://future.ongov.net> to provide additional comments



# Elements



## Elements of Sustainable Development

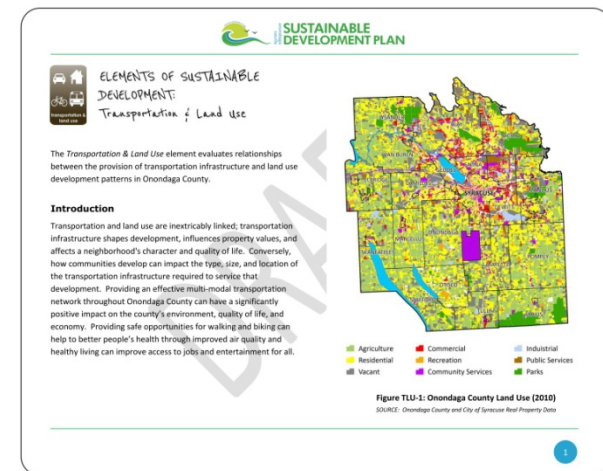






## Key Research & Findings

- > Transportation and Land Use are inextricably linked
- > Vehicle miles traveled and commute times are increasing
- > Fiscal constraints on transportation budgets are severe, must prioritize investments
- > Suburban development patterns do not support transit and walkability
- > Technology advances alone can't mitigate polluting effects of commuting, need to change land use patterns







## Key Research & Findings

- > Characteristics of traditional, suburban, rural
- > Expanded suburban, rural shrinking, traditional suffering
- > Need to explore new ideas to increase success and sustainability
- > Qualities of sustainable places:
  - > infill
  - > well-connected networks
  - > mixed-use
  - > diversity
  - > multi-modal options
  - > cities, villages and hamlets as focal points

**ELEMENTS OF SUSTAINABLE DEVELOPMENT**  
*Buildings & Neighborhoods*

The *Buildings & Neighborhoods* element examines sustainable development patterns and development regulations in Onondaga County, and focuses on the benefits of development in and around traditional neighborhoods.

**Introduction**

Onondaga County is home to more than 450,000 people living in a variety of settings – from the historic urban neighborhoods associated with the City of Syracuse and the County’s 15 villages, to rural communities with a deep agricultural heritage, to more recent suburban communities characterized by large-lot residential subdivisions and retail and commercial corridors. Three types of urban form (traditional, rural, and suburban) are the foundation of development within the County and offer distinct environments that support a variety of lifestyles for residents.

Prior to World War II, much of the County’s population resided in compact and dense settlements located in the City of Syracuse and the County’s villages. Characterized by a diversity of uses, walkability, central public spaces, and a well-defined sense of place, the tradition of historic neighborhoods is one of the County’s

Traditional Neighborhood Development  
SOURCE: Bergmann Associates, PC

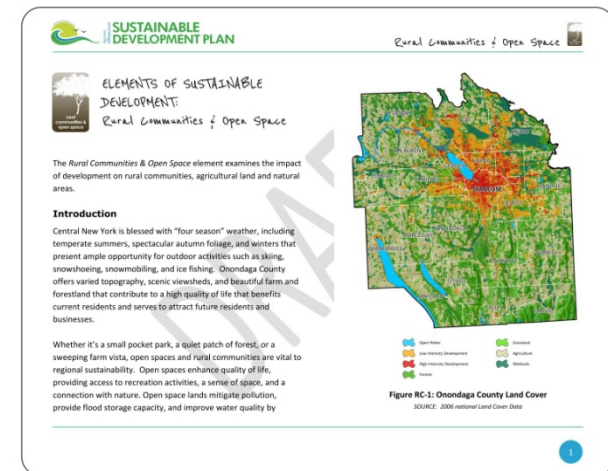
Pedestrian-scale urban form  
SOURCE: Bergmann Associates, PC

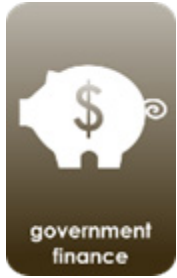
1



## Key Research & Findings

- > Protection of open space is a priority for residents
- > Open space lacks connectivity
- > Farming is a large industry in Onondaga County
- > Reduction in farmland and conversion of prime soils
- > Encroachment of suburban development changes character
- > Conflict between keeping rural character and growing tax base
- > Many rural areas are not conducive to on-site wells or septic





## Key Research & Findings

- > High tax burden
- > Fragmented government structure
- > State and Federal aid is becoming more scarce
- > Scattered, low-density development with infrastructure is costly
- > Reliance on property taxes creates municipal competition
- > Fiscal impacts of different uses and place types

**ELEMENTS OF SUSTAINABLE DEVELOPMENT: GOVERNMENT FINANCE**

The Government Finance element explores how development patterns in Onondaga County have affected the ability of local governments to provide the high quality of life their residents have come to expect.

**Introduction**

Fiscally sustainable communities are those places that provide services that consistently contribute to a high quality of life for residents, and do so in a manner that is cost-effective for current and future generations. This includes the community's ability to provide parks and recreation opportunities, high quality educational facilities, safe neighborhoods, functioning infrastructure, and the general health, safety and welfare of its residents. The ability to provide these services is greatly affected by the type and pattern of development as this directly impacts a community's costs and revenues. Development in Onondaga County has become increasingly scattered, and in the absence of population growth over the last decades, local governments and the private sector have built more roads, water and sewer infrastructure, schools, fire stations, libraries, parks, etc., for the same amount of people. The fiscal inefficiencies of this development model are stretching the

**VILLAGE REPORT FOR 2010-2012**

**VILLAGE OF SKANATELES IN COUNTY OF ONONDAGA**

**City of Syracuse ANNUAL BUDGET**  
Fiscal Year Ending June 30, 2011  
Mayor Stephen A. Miller



## Key Research & Findings

- > Stormwater, wastewater and drinking water infrastructure
- > Expanding infrastructure to serve new development
- > Communities are faced with aging infrastructure, new mandates
- > National leader in green infrastructure
- > Abundance of water resources a tremendous asset

**ELEMENTS OF SUSTAINABLE DEVELOPMENT**  
Water Resources

The Water Resources element considers how the provision of water and wastewater treatment has affected our development patterns and how our development patterns have impacted the quality of our water.

**Introduction**

As a region, we have been blessed with an abundance of water – Lake Ontario, the Finger Lakes, Oneida Lake, Onondaga Lake, and the Seneca River, not to mention all of the smaller ponds, lakes and streams scattered across the landscape. With this blessing comes a responsibility – to soundly manage our water resources so as to preserve them for future generations to use, manage, and enjoy. Sound management of our water resources should consider all components of the hydrologic cycle and be based on a holistic approach that not only addresses the development, conservation, and management of water resources, but also the impact that our land development patterns can have on this resource.

Sanitary District Boundary

**Figure WR-1: Onondaga County Sanitary District**  
SOURCE: Seneca-Onondaga County Planning Agency



## Key Research & Findings

- > Authority to regulate land use is vested to municipalities
- > Fragmented planning and zoning can lead to inefficiencies
- > Planning resources are limited
- > Consider regional needs and goals in local planning
- > New opportunities in shared planning

**SUSTAINABLE DEVELOPMENT PLAN**

**ELEMENTS OF SUSTAINABLE DEVELOPMENT**  
Intermunicipal Planning

The *Intermunicipal Planning* element examines the current extent of intermunicipal planning within Onondaga County and provides ways in which these collaborative efforts can be improved.

**Introduction**

Onondaga County is home to more than 450,000 people living in a variety of settings – from historic tree-lined urban neighborhoods to old farmhouses set among rolling fields. The post-World War II population shift redistributed the population away from Syracuse and into suburban environments and land use patterns driven by the presence of infrastructure and accessibility to major roadways. Once largely independent of each other and of the larger region, the County's 35 communities currently share significant resources, including road, water and sanitary sewer infrastructure. Additionally, the County as a whole is heavily dependent upon the economic engine of Syracuse, further connecting communities. While intermunicipal boundaries are indistinguishable in the landscape, the economic, resource and community character connections between communities are a significant factor in the success of the Sustainable Development Plan.

City  
Town  
Village  
Preservation Station Territory



## Key Research & Findings

- > Transportation and homes account for over 50% of energy consumption
- > Need to reduce energy demand
- > Need to retrofit older housing and commercial building stock
- > Explore clean, renewable energy sources
- > Local initiatives and partners

SUSTAINABLE DEVELOPMENT PLAN

**ELEMENTS OF SUSTAINABLE DEVELOPMENT**  
Energy

The Energy element examines the impact that Onondaga County's current development trends have on energy consumption and greenhouse gas emissions, particularly as they relate to residential development and the transportation system.

**Introduction**

Energy is a fundamental aspect of sustainability. Without energy, access to food, water, and other resources and opportunities that shape our quality of life is lost. Ensuring access to affordable, adequate, and appropriate energy services, while also reducing energy use and mitigating the adverse environmental and socio-economic impacts from the development and provision of these services is critical to a sustainable future. To ensure the long-term sustainability of the region's energy resources, it is important to reduce both the energy consumed and greenhouse gases (GHG) emitted by buildings and by the transportation network. Transportation and housing are two of the largest consumers of energy and contributors of GHG emissions in the U.S. It is also important to explore the viability of renewable energy projects to reduce our dependence on fossil fuels.

Onondaga County  
Climate Action Plan  
April 2012

1



## Key Research & Findings

- > Social and economic imbalances
- > Perceptions of schools drive housing choice
- > Increase walking/biking - lessen pollution and improve public health through design
- > Access to food, recreation, transit, services, jobs
- > Public and scenic spaces contribute to quality of life

**SUSTAINABLE DEVELOPMENT PLAN**

---

**ELEMENTS OF SUSTAINABLE DEVELOPMENT**  
Livability & Society

The Livability & Society element examines the relationships between development patterns, quality of life, public health and social equity in Onondaga County.

**Introduction**

Livability focuses on the human element of places that shapes a community's quality of life. It incorporates a wide range of factors, including the built and natural environments, economic and educational opportunities, access to life's necessities and other community assets, healthy living, social stability and equity, and cultural, entertainment and recreation opportunities.

The overarching goal of this element is to ensure that development in Onondaga County is based on providing a high quality of life and standard of living for its citizens. This should occur through the strengthening of social and cultural aspects, the improvement of our health through design, and access to and full participation in those assets and amenities that make a community more livable.

**Onondaga County scenic vista**  
SOURCE: Syracuse Onondaga County Planning Agency

**Village center**  
SOURCE: Bergman Associates, PC

1





## Key Research & Findings

- > Transitioning economy, diversifying job sectors
- > 38,000 workers commuting into the County
- > Education and high quality skills of residents is key
- > Strengthen industry concentrations and links to global economy
- > Revitalizing the region’s urban cores, main streets and neighborhoods
- > Revitalization, infill, and reuse of existing assets

**ELEMENTS OF SUSTAINABLE DEVELOPMENT**  
Economy

Economic opportunity for all residents is vital to the success and sustainability of the region. Skilled and knowledgeable people tend to locate in places with a high quality of life that offer excellent social, cultural and natural assets.

**Introduction**

Like many other regions in the northeast, Onondaga County is facing population decline, urban sprawl and an economy transitioning from manufacturing and agriculture to more service-oriented and knowledge-based industries. The County's population has also shifted from the historic urban core to more rural and suburban areas, creating sprawling land development patterns that can result in increased infrastructure costs, the loss of a sense of place, increased traffic congestion, and the deterioration of older communities. All of these factors can negatively affect our region's economic competitiveness by reducing productivity, limiting the formation of dense economic clusters, and by providing a quality of life that is not attractive to prospective employers and employees.

In terms of economic development and revitalization, efforts to identify, develop and support business clusters and the companies

ALBANY ALLEGANY BROOME BRONX CATTARAUGUS  
**CAYUGA** CHAUTAUKUA CHEMUNG CHENANGO CLINTON  
 COLUMBIA **CORTLAND** DELAWARE DUTCHESS ERIE  
 ESSEX FRANKLIN FULTON GENESSEE GREENE HAMPTON  
**CENTRAL NEW YORK**  
 HERKIMER JEFFERSON LEECH LEWIS LIVINGSTON  
**MADISON** MADISONIA MONTICOMERY NASSAU NEW YORK  
 NIAGARA ONEIDA **ONONDAGA** ONTARIO ORANGE  
 ORISKANY **OSWEGO** OTSEGO PUTNAM RENSSELAIRE  
 SCHENECTADY ROCKLAND SARATOGA SCHUYLER  
 SCHUYLER SCHOHARIE SCHENECTADY ST. LAWRENCE  
 SUFFOLK SULLIVAN TIOGA TOMPKINS ULSTER WARREN  
 WASHINGTON WAYNE WESTCHESTER WYOMING YATES

Central New York Regional Economic Development Council | New York Strategic Plan 2010-2015



# Plan



# Sustainable Development Plan



## “Living” Plan – future.ongov.net

### Welcome to the Onondaga County Sustainable Development Plan!



#### A Message from the County Executive

Thank you for visiting our Sustainable Development Plan website. Our land use patterns and infrastructure investments play a big part in how sustainable we can be as a region. Good land use planning helps to preserve natural areas, improve air and water quality, create walkable communities, support transit, reduce energy usage and improve livability for our residents.

The Onondaga County Sustainable Development Plan will seek public input in a variety of ways to determine a preferred future vision for our community and then identify the steps necessary to achieve that vision to make our County a great place to live today and for future generations.

#### announcements, etc

- Something New in Syracuse
- Governor Cuomo Signs Land Bank Legislation
- EPA Green Announcement
- Contact Us & E-News Sign-up



### What is the Sustainable Development Plan?

*sustainable development - development that meets the needs of the present without compromising the ability of future generations to meet their own needs*

Like many other older regions in the northeastern United States, Onondaga County has faced a number of challenges over the past several decades, including a static population, a loss of manufacturing and a transitioning economy, and development patterns that make it difficult to have a thriving economy, healthy environment and a strong social fabric. Accompanying these challenges are housing and schooling disparities and centralized poverty, a loss of open space and farmland, an inability to support mass transit, inefficient infrastructure and burdensome taxes, and increasing energy usage.

If Onondaga County is to thrive again, these challenges must be faced head on. This includes celebrating the opportunities, acknowledging the obstacles and building from both.



Through the Sustainable Development Plan, Onondaga County is looking to do just that. With a direct focus on land use and sustainable development patterns, this plan will not only direct County policy, but also inform our local governments, stakeholders, and residents. The Sustainable Development Plan will act as a platform to challenge our assumptions of what good growth looks like and engage in a positive regional discussion on what a sustainable future for Onondaga County entails.

#### announcements, etc

- Something New in Syracuse
- Governor Cuomo Signs Land Bank Legislation
- EPA Green Announcement
- Contact Us & E-News Sign-up



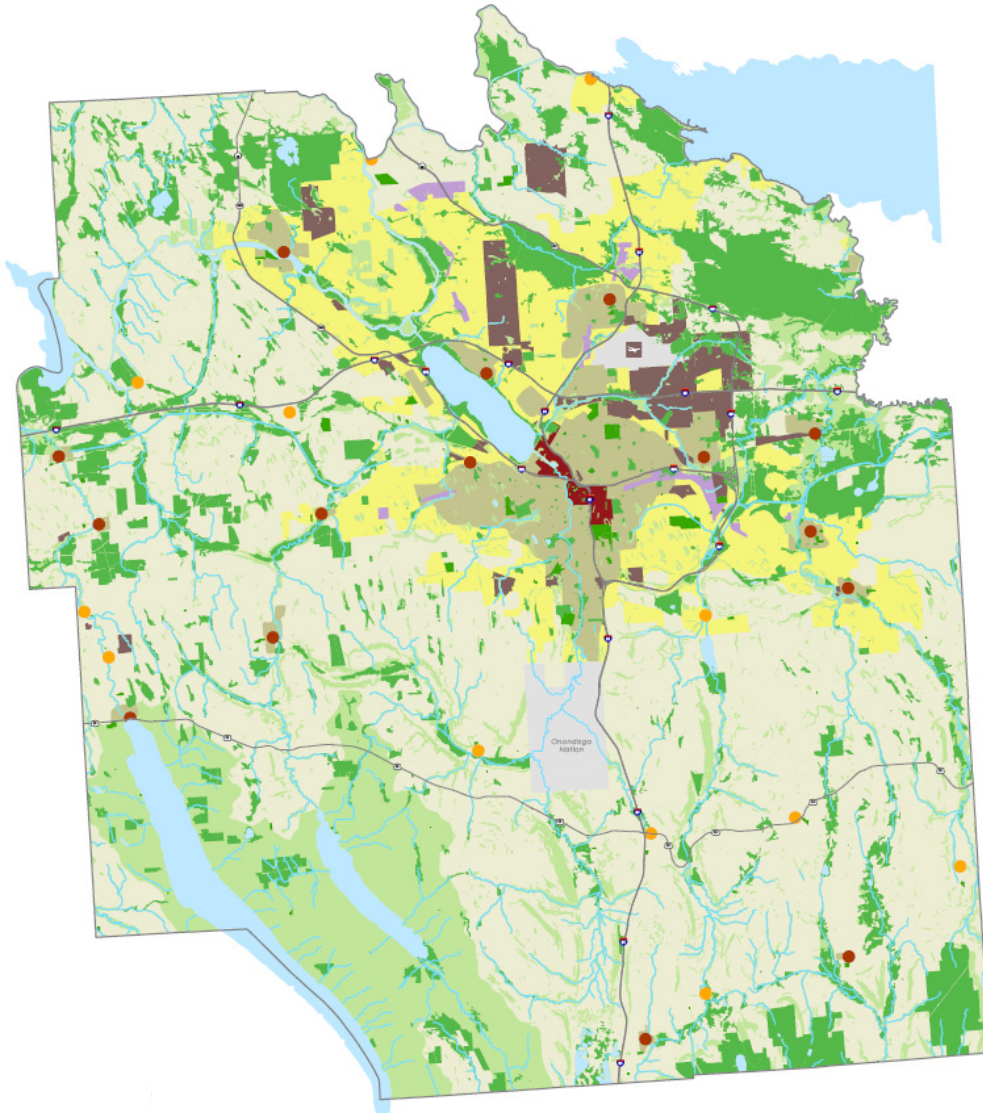
# Action



## Character Area Mapping and Guidance



- > Mapped areas of common identity and qualities
- > Provides a countywide illustration of our built and natural patterns
- > Serves as a baseline condition for benchmarking changes
- > Developed guidance and strategies intended to strengthen and enrich each area to their fullest potential
- > General guidance in the Summary Report with more information on the website



## Character Areas Map /

-  Urban Core
-  Employment Centers
-  Regional Shopping
-  Traditional Neighborhoods
-  Suburban Neighborhoods
-  Village Cores
-  Hamlets
-  Rural Landscapes
-  Environmental Reserves
-  Protected Lands



## Village Cores

The Village Cores Character Area is best described as the traditional center of the incorporated villages in Onondaga County. Commonly focused at the intersection of State or County roads, these areas serve as historic retail, service, government and religious centers surrounded by and connected to Traditional Neighborhoods areas.

During the suburbanization movement, many of these areas struggled to maintain relevance, resulting in high vacancy rates and disinvestment. Across the country, however, these areas are undergoing a revival as more residents are embracing a distinct and livable neighborhood experience.

**Restore human legs as a means of travel. Pedestrians rely on food for fuel and need no special parking facilities.**  
*— Lewis Mumford*



## Character

While each Village Core is unique, common features may include a highly connective sidewalk system, public parking to the side and rear of structures, two- to four-story buildings in both block and freestanding formats and a mix of uses. While lower in intensity and scale than the Urban Core, Village Core areas require a vibrant mix of uses supporting an active streetfront, upper-story residential, walkable and safe streets, multi-modal accessibility, well maintained landscaping and public art. Village Core areas are well suited to provide niche retail, personal services and eating establishments. Village Cores also tend to provide urban infrastructure, such as water and sewer service, allowing for increased development densities.

## Guidance

Village Cores once served as the civic and commercial centers for residents of Onondaga County. While the form and structure of these areas are still mostly intact, much of the function has been lost during post-World War II development trends. To strengthen and enhance the Village Cores again, communities should take advantage of the increasing demand for village living to spur significant investment in and adjacent to Village Cores, particularly in Traditional Neighborhoods. In support of a vibrant mix of uses and housing types, upper story areas should be largely residential, increasing the volume of foot traffic and generating 24-hour demand for uses such as convenience retail, banking and laundromats.

## Sample Strategies

- Provide regulations and programs that permit and support upper-story residential and retail build-out of first floor spaces.
- Encourage the formation of Business Improvement Districts to effectively maintain and enhance the public realm.
- Improve on- and off-street parking supply through shared lots, locating lots behind buildings, proper screening and enhanced wayfinding systems.
- Support pedestrian friendly environments through sustainable streetscape design and Complete Streets.



## Action Plan

- > **Implementation guidance for the Plan**
- > **Result of Vision and Elements**
- > **Eight Policy Areas**
  - > **Grow Smarter**
  - > **Sustainability Pays**
  - > **Protect the Environment**
  - > **Strengthen the Center**
  - > **Fix it First**
  - > **Keep Rural Communities Rural**
  - > **Lighten Our Footprint**
  - > **Plan for People**



# Sustainable Development Plan



## Grow Smarter

Encourage and support sustainable and fiscally responsible development patterns.

**1**

**Policy Statement:** Onondaga County will encourage and support sustainable and fiscally responsible development patterns. Growth that takes advantage of existing infrastructure, is designed to be a long term asset to the community is a core priority of the County. We will strive for place-based design to ensure distinct, vibrant places are attractive and responsive to residents and visitors.

Projects & Practices	Planning Scale				Timeframe			Partners					Elements of Sustainable Development						
	Region	County	Community	Site	Short	Medium	Long	State/Federal	Regional	Onondaga County	Municipalities	Non-profits, Institutions, Schools	Citizens	Transportation & land use	economy	6	Intermittent planning	Health & society	Business neighbors
Provide municipalities with planning assistance and help them update their comprehensive plans, land use plans and zoning ordinances to promote consistency with the Sustainable Development Plan.		✓	✓			✓				✓	✓			✓		✓			✓
Redevelop existing sites or in-fill areas already served by infrastructure rather than developing on open land.			✓	✓	✓	✓	✓				✓			✓	✓	✓		✓	✓

## Key to Action Plan Tables

The following pages provide an introduction to the Action Plan, including a one-page key illustrating the various components of a typical Policy Area table found in the Action Plan, as well as a brief overview of each Policy Area.

### **1** Policy Theme & Statement

An overarching theme and statement were developed to provide an overview of each Policy Area.

### **2** Projects & Practices

The actions identified in this portion of the Action Plan tables are those recommended projects and practices determined to be of highest priority as they relate to implementation.

### **3** Planning Scale

To allow for a more focused implementation, the recommended projects and practices are broken down into four planning scales – the region, the County, the community, and the site.

### **4** Timeframe

Each project and practice was assigned to one of three timeframes for implementation:

- Short Term - strategies should be implemented within the first 2 years of plan completion.
- Medium Term - strategies should be implemented from 3 to 10 years after plan completion.
- Long Term - strategies may be ongoing or take 10 or more years to implement.

### **5** Partners

Given the comprehensive nature of this effort, parties that would be involved with implementing each of the projects and practices are suggested.

### **6** Elements of Sustainable Development

Many of the projects and practices are based on the key findings from each of the nine Element Reports. As such, the relevant Elements are identified for each project and practice.



## Grow Smarter

Encourage and support sustainable and fiscally responsible development patterns.

### Policy Statement:

Onondaga County will encourage and support sustainable and fiscally responsible development patterns. Growth that takes advantage of existing infrastructure, strengthens our traditional centers and is designed to be a long term asset to the community is a core priority of the County. We will strive for place-based design to ensure distinct, vibrant places are attractive and responsive to the needs of our residents, workers and visitors.



## Key Projects & Practices

- 1 Reinforce traditional neighborhood development patterns and characteristics and look for opportunities to retrofit suburban sites to achieve density, walkability, and interconnectedness.
- 2 Develop model ordinances, guidelines, and best practices for Smart Growth design principles and work with municipalities to incorporate them into local codes and project reviews.
- 3 Institute a County Sustainable Streets policy combining the concepts of Complete Streets to create multi-modal transportation networks with the use of green infrastructure to address stormwater issues.



## Grow Smarter

Encourage and support sustainable and fiscally responsible development patterns

Policy Statement  
Onondaga County  
and fiscal  
takes ad  
traditiona  
the com

for place-based design to ensure distinct, vibrant places are attractive and responsive to the needs of our residents, workers and visitors.



## Key Projects & Practices

1 Reinforce traditional neighborhood development patterns and characteristics and look for

2

Develop model ordinances, guidelines, and best practices for Smart Growth design principles and work with municipalities to incorporate them into local codes and project reviews.

achieve  
ess.

nd best  
ples and  
em into

3

Institute a County Sustainable Streets policy combining the concepts of Complete Streets to create multi-modal transportation networks with the use of green infrastructure to address stormwater issues.





## Sustainability Pays

Sustainable development today pays dividends well into the future.



### Policy Statement:

Sustainability pays dividends in a variety of ways – with cleaner air and water, cost-effective public services, and appealing places for people and jobs. It is the policy of Onondaga County to require, recognize and reward principles and practices resulting in a more efficient and sustainable region. Innovative strategies that improve cooperation, create a regional competitive advantage and strive to meet the vision of this plan will be supported by the County.

## Key Projects & Practices

1

Develop and fund a Sustainability Pays program to implement targeted municipal efforts consistent with the *Sustainable Development Plan*.

2

Identify opportunities to improve government efficiency wherever possible through the sharing or consolidation of services to reduce the tax burden on property owners.

3

Consider the regional net fiscal impact of development and investigate taxing strategies that minimize competition between municipalities.



## Sustainability Pays



### Key Projects & Practices

Sustainable development today pays dividends well into the future.

1 Develop and fund a Sustainability Pays program to implement targeted municipal efforts consistent with

Policy Statement  
Sustainable  
cleaner and  
appealing places for people and jobs. It is the policy of Onondaga County to require, recognize and reward principles and practices resulting in a more efficient and sustainable region. Innovative strategies that improve cooperation, create a regional competitive advantage and strive to meet the vision of this plan will be supported by the County.

ht  
aring or  
burden

1

Develop and fund a Sustainability Pays program to implement targeted municipal efforts consistent with the *Sustainable Development Plan*.

3 Consider the regional net fiscal impact of development and investigate taxing strategies that minimize competition between municipalities.



## Protect the Environment

Support and enforce practices to protect our natural environment for future generations.



### Policy Statement:

Projects and practices that protect our natural resources, conserve our wildlife habitat and enhance opportunities for connective greenways and recreational systems will provide an important legacy for future generations. Onondaga County will support and enforce practices to protect our natural assets and minimize the effects of development on our fragile ecosystems.

## Key Projects & Practices

- 1** Create regional and local open space plans to prioritize protection efforts and establish connections between existing open spaces.
- 2** Complete and connect regional and local trail systems, including the Onondaga Lake Loop the Lake Trail, the Erie Canalway Trail and the Onondaga Creekwalk, to form major pedestrian and cycling oriented recreational and transportation spines in the region.
- 3** Limit development in wetlands, floodplains, sensitive environmental areas, important wildlife habitats, watersheds that are sources of drinking water, or areas with valuable mineral resources.

## Protect the Environment



### Key Projects & Practices

Support  
protect  
for futu

Policy S  
Projects  
conserv  
connect  
an import

an important legacy for future generations. Onondaga County will support and enforce practices to protect our natural assets and minimize the effects of development on our fragile ecosystems.

**3**

Limit development in wetlands, floodplains, sensitive environmental areas, important wildlife habitats, watersheds that are sources of drinking water, or areas with valuable mineral resources.

**1**

Create regional and local open space plans to prioritize protection efforts and establish

**3**

Limit development in wetlands, floodplains, sensitive environmental areas, important wildlife habitats, watersheds that are sources of drinking water, or areas with valuable mineral resources.



## Strengthen the Center

Strengthen and support the City of Syracuse as the region's center of commerce, culture and innovation.

### Policy Statement:

We are one region, and we will rise and fall together. It is the policy of Onondaga County to support projects and practices to strengthen our urban core as a nationally recognized regional center of jobs and commerce, culture, education and innovation. We will work collectively to elevate the region by combating the challenges facing our region's core.



## Key Projects & Practices

1

Promote recognition of the importance of Syracuse as the economic and cultural center of Onondaga County and Central New York.

2

Promote the development and enhancement of exciting and iconic destinations (e.g., Armory Square, Inner Harbor) within the urban core to attract economic activity and tourism. Reinforce downtown Syracuse as the hub for arts, culture and entertainment.

3

Support the Say Yes to Education program to provide a needed support system to families within the City school district as well as to attract and retain City residents.



## Strengthen the Center



### Key Projects & Practices

Strengthen and support the City of Syracuse as the region's center of commerce.

**1** Promote recognition of the importance of Syracuse as the economic and cultural center of Onondaga County.

**3** Support the Say Yes to Education program to provide a needed support system to families within the City school district as well as to attract and retain City residents.

Policy Statement  
We are committed to the policy practice recognizing education and innovation. We will work collectively to elevate the region by combating the challenges facing our region's core.

**3** Support the Say Yes to Education program to provide a needed support system to families within the City school district as well as to attract and retain City residents.

nt  
hory  
to  
force  
ture



## Fix it First

Maximize the use of existing infrastructure as a way to provide fiscally responsible public services.

### Policy Statement:

A sustainable future is dependent upon our ability to be fiscally prudent. We will collaborate as a region to protect our built and natural assets and maximize the use and efficiency of fragile infrastructure. With finite fiscal capacity, continued expansion of infrastructure and service districts in the absence of true regional need is unsustainable.



## Key Projects & Practices

- 1 Extension of the Onondaga County Sanitary District, construction of new wastewater facilities or enhancements to existing County-owned facilities to meet capacity demands will only occur when supported by the policies and principles of the *Sustainable Development Plan*.
- 2 Prioritize maintenance of existing facilities and infrastructure over building new facilities and infrastructure.
- 3 Onondaga County Planning Board Review of municipal planning and zoning referrals, as well as the County's *Capital Improvement Plan*, must require compliance with the *Sustainable Development Plan*.

## Fix it First

Maximize the use of existing infrastructure as a way to provide public services

Policy Statement  
A sustainable community is fiscally prudent, uses our built infrastructure efficiently, and continues to improve the absence of



### Key Projects & Practices

Extension of the Onondaga County Sanitary District, construction of new wastewater facilities or

**1**

Extension of the Onondaga County Sanitary District, construction of new wastewater facilities or enhancements to existing County-owned facilities to meet capacity demands will only occur when supported by the policies and principles of the *Sustainable Development Plan*.

must require compliance with the *Sustainable Development Plan*.





## Keep Rural Communities Rural

Strengthen and protect the region's strong agricultural tradition and conserve invaluable rural landscapes.



### Policy Statement:

Sustaining environments for farmland protection, local food production and preservation of rural resources are key elements of local and regional planning and relate to the success of all our communities. Onondaga County will engage a broad base of stakeholders to devise local and regional strategies for protection of our finite rural resources.

## Key Projects & Practices

1

Recognize agriculture as an important industry in Onondaga County that creates jobs, provides locally grown food, supports tourism, maintains open space, and minimizes burdens on local governments for services.

2

Work with municipalities to identify agricultural protection zones by limiting residential and commercial encroachments within active farm communities, minimizing strip development along road frontages, and utilizing transfer of development rights programs to preserve farmland and farming.

3

Investigate taxing strategies or other financial incentives to limit the need for rural communities to attract development to support school and municipal budgets and encourage owners to keep vacant land as open space.



## Keep Rural Communities Rural

Strengthen and protect the region's strong and colorful landscape.

Policy Sustain food pro key ele the suc engage regional



### Key Projects & Practices

**1** Recognize agriculture as an important industry in Onondaga County that creates jobs, provides locally grown food, supports tourism, maintains open space, and minimizes burdens on local governments for services.

**1** Recognize agriculture as an important industry in Onondaga County that creates jobs, provides

**3** Investigate taxing strategies or other financial incentives to limit the need for rural communities to attract development to support school and municipal budgets and encourage owners to keep vacant land as open space.

ains  
al  
rural  
farm  
e

farm and farming.

## Lighten Our Footprint

Lower our carbon footprint by reducing energy demand, embracing cleaner energy options and using resources wisely.



### Policy Statement:

Working with government, research institutions and businesses, Onondaga County will identify and implement a variety of practices and projects to maximize use of clean and renewable energy supplies and reduce overall energy demand. We also recognize that reducing our energy demand relates significantly to our commuting patterns, as well as the location and design of residential and commercial buildings. We, as citizens, businesses and government will strive to reduce the region's vehicle miles traveled and household and building energy demands.

## Key Projects & Practices

- 1 Implement the County's Climate Action Plan to reduce greenhouse gas (GHG) emissions resulting from County operations. Create and implement local plans to reduce municipal GHG emissions.
- 2 Establish and promote programs and opportunities (e.g., Save the Watt) to identify and reduce residential and commercial energy demand and to incentivize energy efficiency and the development of renewable energy sources.
- 3 Educate the public on the role that development patterns and transportation choices have on energy usage and greenhouse gas emissions.



## Lighten Our Footprint

Lower our carbon footprint

by reducing energy consumption and embracing energy efficiency options wisely.

Policy Staff Working with businesses and government a variety of energy efficiency and renewable energy demand. We also recognize that reducing our energy demand relates significantly to our commuting patterns, as well as the location and design of residential and commercial buildings. We, as citizens, businesses and government will strive to reduce the region's vehicle miles traveled and household and building energy demands.



## Key Projects & Practices

2

Establish and promote programs and opportunities (e.g., Save the Watt) to identify and reduce residential and commercial energy demand and to incentivize energy efficiency and the development of renewable energy sources.



1. Implement the County's Climate Action Plan to reduce greenhouse gas (GHG) emissions resulting from County operations. Create and implement



3. Commuting patterns and transportation choices have a significant impact on energy usage and greenhouse gas emissions.



## Plan for People

Recognize people as our greatest asset by creating quality places and opportunities for all.

### Policy Statement:

As a region, we will work together to ensure that all our residents have access to quality communities, jobs and services. We will ensure that we are creating and sustaining the elements of our communities that enhance public health, economic opportunity, mobility, access to daily needs and enjoyment of our region.



## Key Projects & Practices

1

Invest in improving community quality, including mixed uses and housing types, interesting architecture and site design, sidewalks, streetscapes and landscaping, and clustering of destinations to promote vibrant and appealing places for people to live, work and recreate.

2

Encourage designing and siting senior living facilities to fit into existing communities that maximize walkable access to neighborhood amenities and transit.

3

Identify areas within the County lacking access to basic neighborhood services, such as supermarkets and parks, and help to create the conditions necessary to support the development of desired neighborhood services and amenities.



## Plan for People

Recognize people as our greatest asset by creating quality places and opportunities.

Policy & Strategy  
 As a result of this plan, residents will have access to services, the environment, and economic opportunities.



## Key Projects & Practices

1 Invest in improving community quality, including mixed uses and housing types, interesting

2 Encourage designing and siting senior living facilities to fit into existing communities that maximize walkable access to neighborhood amenities and transit.

3 Identify areas within the County lacking access to basic neighborhood services, such as supermarkets and parks, and help to create the conditions necessary to support the development of desired neighborhood services and amenities.

scapes  
 ns to  
 ple to





## Next steps

- > Get the word out
- > Draft plan feedback
- > Continue building the website
- > Implementation
- > Monitoring
- > Education

*Anything else you're interested in is not going to happen if you can't breathe the air and drink the water. Don't sit this one out. Do something.*

— Carl Sagan





# Sustainable Development Plan

## Join us on the path for a sustainable future!

Explore the full Plan at:

***[future.ongov.net](http://future.ongov.net)***

Syracuse-Onondaga County Planning Agency  
John H. Mulroy Civic Center  
421 Montgomery Street - 11<sup>th</sup> Floor  
Syracuse, New York 13202

(315) 435-2611

[www.ongov.net/planning/](http://www.ongov.net/planning/)  
[countyplanning@ongov.net](mailto:countyplanning@ongov.net)