

David Cappaert, Michigan State University, bugwood.org

Why You Should Care about Emerald Ash Borer

Onondaga County Planning Federation



Cornell University
Cooperative Extension

Why You Should Care about Emerald Ash Borer
Onondaga County Planning Federation



Emerald Ash Borer

EAB Basics



Lots of ash in Onondaga County



Backyards and homes





Streets and roads



Cornell University
Cooperative Extension

Why You Should Care about Emerald Ash Borer
Onondaga County Planning Federation



Parks



Cornell University
Cooperative Extension

Why You Should Care about Emerald Ash Borer
Onondaga County Planning Federation



Buildings



Cornell University
Cooperative Extension

Why You Should Care about Emerald Ash Borer
Onondaga County Planning Federation



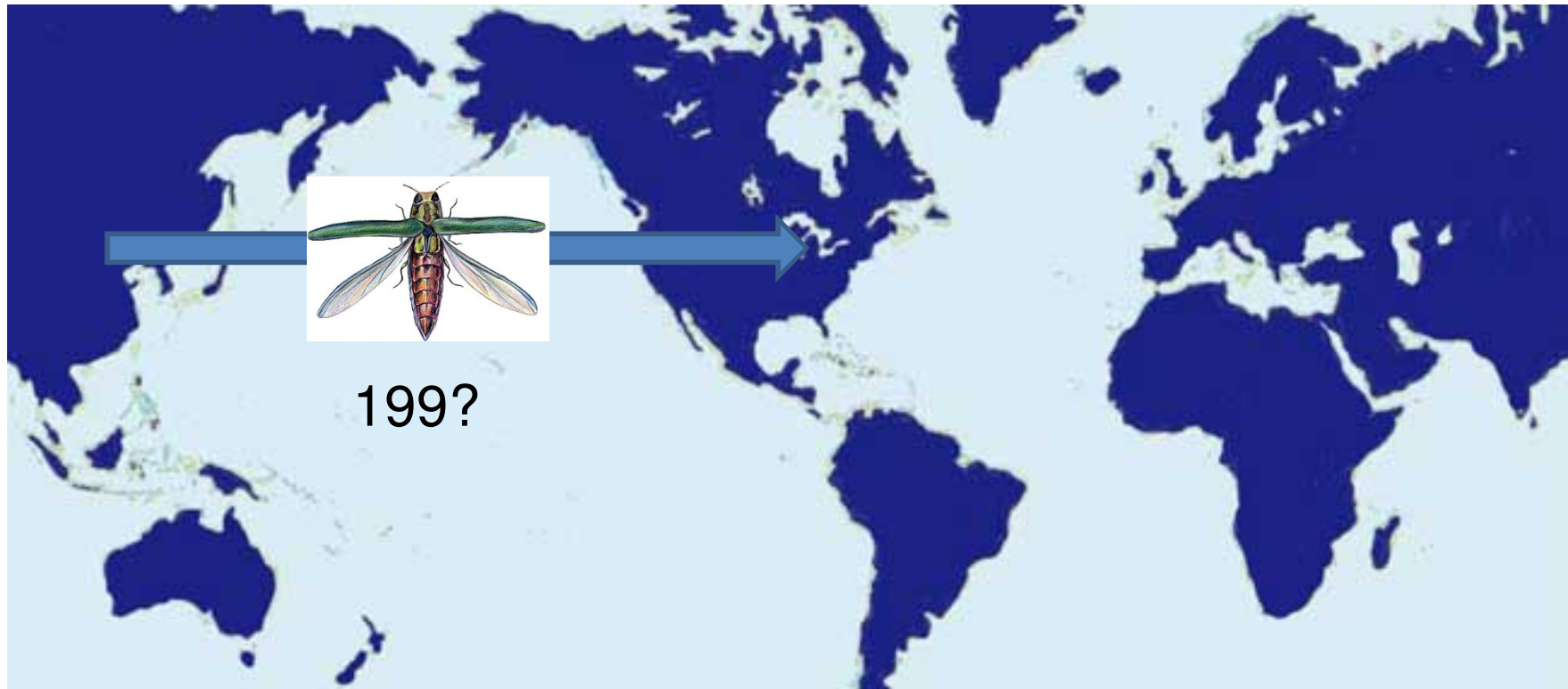
Wood lots



Cornell University
Cooperative Extension

Why You Should Care about Emerald Ash Borer
Onondaga County Planning Federation

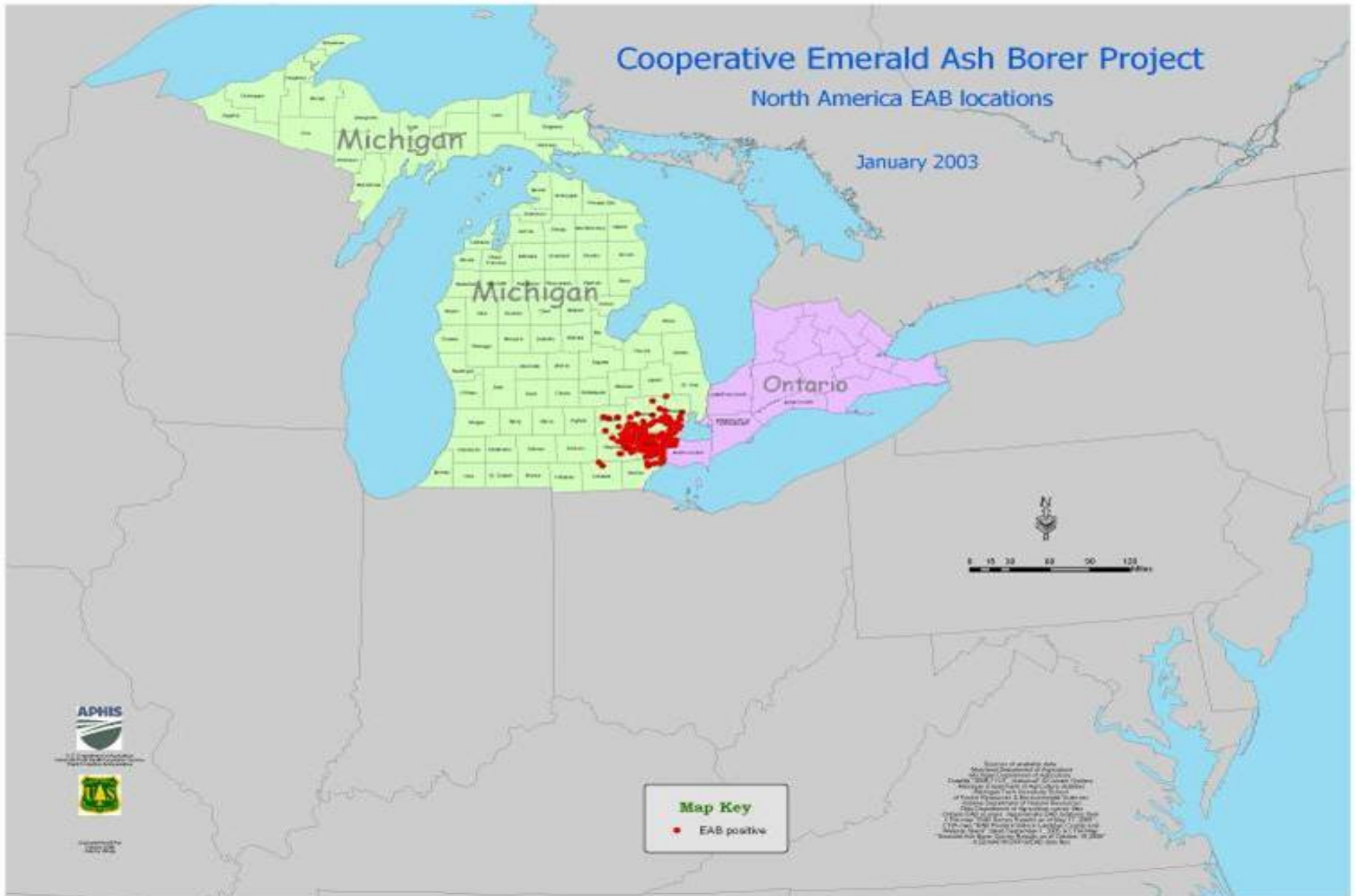
How EAB came to America



Cornell University
Cooperative Extension

Why You Should Care about Emerald Ash Borer
Onondaga County Planning Federation

January 2003

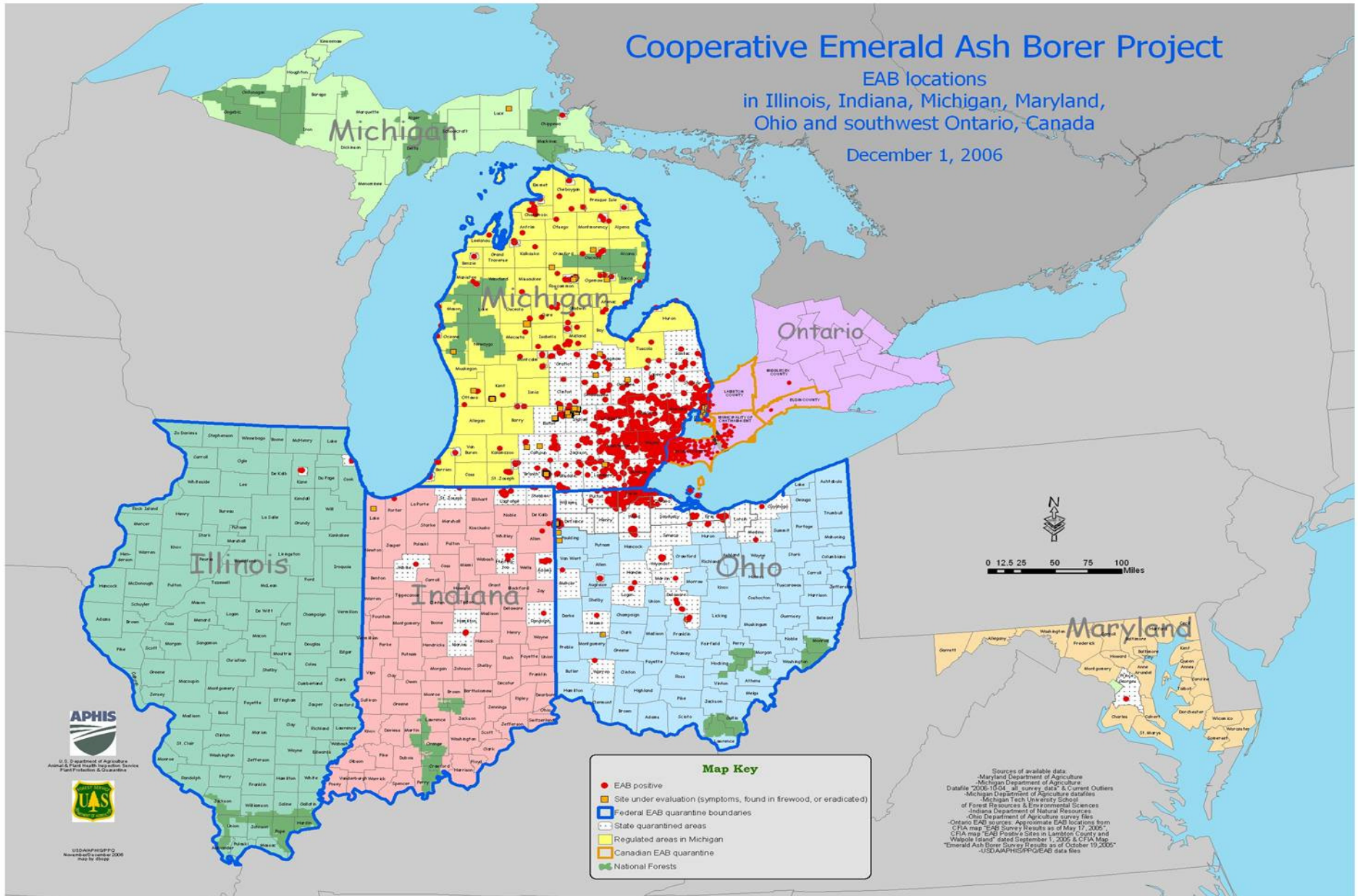


December 2006

Cooperative Emerald Ash Borer Project

EAB locations
in Illinois, Indiana, Michigan, Maryland,
Ohio and southwest Ontario, Canada

December 1, 2006



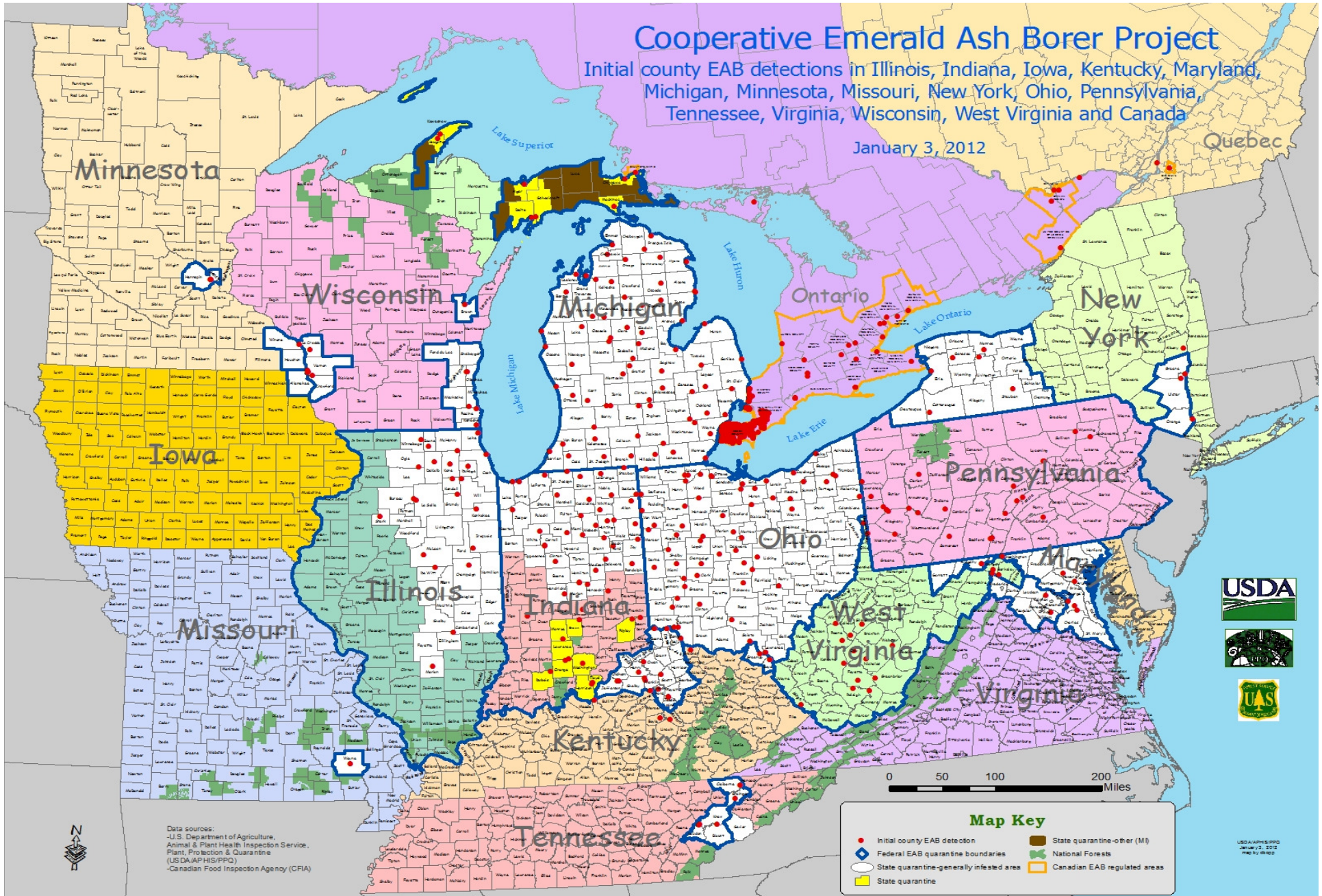
January 2012

Cooperative Emerald Ash Borer Project

Initial county EAB detections in Illinois, Indiana, Iowa, Kentucky, Maryland, Michigan, Minnesota, Missouri, New York, Ohio, Pennsylvania, Tennessee, Virginia, Wisconsin, West Virginia and Canada

January 3, 2012

Quebec



How EAB spreads



Cornell University
Cooperative Extension

Why You Should Care about Emerald Ash Borer
Onondaga County Planning Federation



Cornell University
Cooperative Extension

Why You Should Care about Emerald Ash Borer
Onondaga County Planning Federation



Cornell University
Cooperative Extension

Why You Should Care about Emerald Ash Borer
Onondaga County Planning Federation



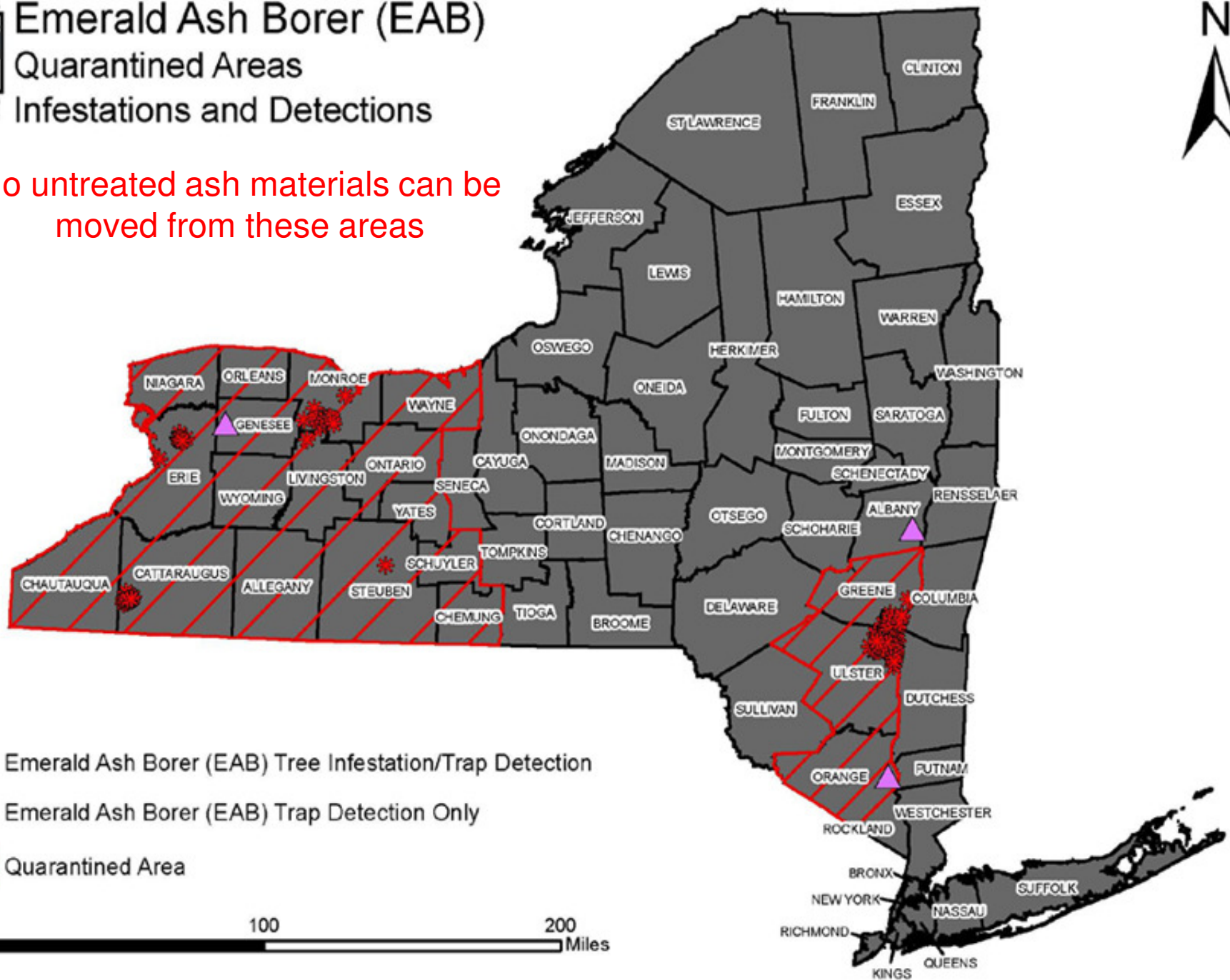
Cornell University
Cooperative Extension

Why You Should Care about Emerald Ash Borer
Onondaga County Planning Federation

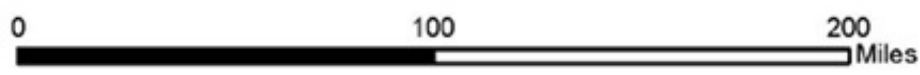


Emerald Ash Borer (EAB) Quarantined Areas Infestations and Detections

No untreated ash materials can be moved from these areas



- Emerald Ash Borer (EAB) Tree Infestation/Trap Detection
- Emerald Ash Borer (EAB) Trap Detection Only
- Quarantined Area





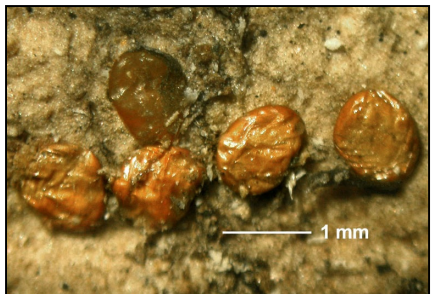
Cornell University
Cooperative Extension

Howard Russell,
Michigan State
University,
Bugwood.org

Why You Should Care about Emerald Ash Borer
Onondaga County Planning Federation

EAB Life cycle

DAMAGE



May through June



June - July



July – next May



Again



Signs & Symptoms



Cornell University
Cooperative Extension

Why You Should Care about Emerald Ash Borer
Onondaga County Planning Federation

Signs & Symptoms



Signs & Symptoms



Cornell University
Cooperative Extension

Why You Should Care about Emerald Ash Borer
Onondaga County Planning Federation

Signs & Symptoms



Cornell University
Cooperative Extension

Why You Should Care about Emerald Ash Borer
Onondaga County Planning Federation

Do I have EAB? Best diagnostic.



Cornell University
Cooperative Extension

Why You Should Care about Emerald Ash Borer
Onondaga County Planning Federation



UGA5016065



UGA1460034



Cornell University
Cooperative Extension

Why You Should Care about Emerald Ash Borer
Onondaga County Planning Federation

So What?

- EAB will arrive in Onondaga County and it will kill every ash tree in our county.
- There will be many dead ash trees along our roads.
- Dead ash will be risk to health and safety and a liability to Towns.



Management Options

- Insecticide treatment
- Removal
- Nothing
- **WHICH TREES?**
 - All publically owned ash
 - All publically owned and some private ash that have direct impact on public property
 - Only high risk ash trees



Insecticide Treatment

- Insecticides are available
- Effective for healthy small-medium trees
- Costly \$15/inch diameter
- Must be treated every 2-3 years until infestation passes



Removal: Cutting Down Trees isn't Simple

- Who will remove?
 - In house? Contractors?
 - Other Agencies?
 - Is there enough equipment?
- What do you do with the wood?
 - Is it infested? See quarantine issues
 - Can it be used?
 - Where will it go?



Cutting Down Trees isn't Easy

- Where will it go?
 - Left in place
 - Marshalling yard
 - Compost (OCRAA?)
- When can this be done?
 - Regulations on movement during flight season



What a Quarantine Means

- Infested wood can't be moved from a quarantined area to a non-quarantined area unless it's "treated"
- **All** firewood, wood chips and mulch must be treated
- Wood must be "treated" and inspected before being moved
- All waste materials must be burned or chipped on site.

**DON'T
MOVE
FIREWOOD!**



**This guy
doesn't need
a free ride!**



Cornell University
Cooperative Extension

Why You Should
Onondaga



How a Quarantine Affects Us

- Limits what we can do with waste wood
- Requires labor intensive treatment of wood products and timing of movement
- Special equipment is needed to chip the wood

Anyone own a tub grinder?

- Need a place to put contaminated wood



Start with an Inventory

- An inventory will tell you:
 - How many trees you have
 - Condition of trees
 - How to direct your management plan



What is already in the toolbox?

- Resource Assessment
 - What *can* you do?
 - Where will you need help?
 - What services can you trade?
 - Make a plan to secure \$\$

Participate in a Task Force
Initiate a Preparedness Plan



Education and Outreach

- Not in my backyard!
- Why not in my backyard?
- It's the city/town/village's responsibility
- Don't raise my taxes!
- Why are all these trees dead? Why didn't someone warn us?



Take Home Points

- Know what you have
 - Ash
 - Other resources
- Make a plan
- Fill the gaps
- Educate the public
- Start talking to your boards about anticipated costs



David Skeval

DAS546@cornell.edu

315-424-9485 ext. 231

Jessi Lyons

JEL264@cornell.edu

315-424-9485 ext. 233

