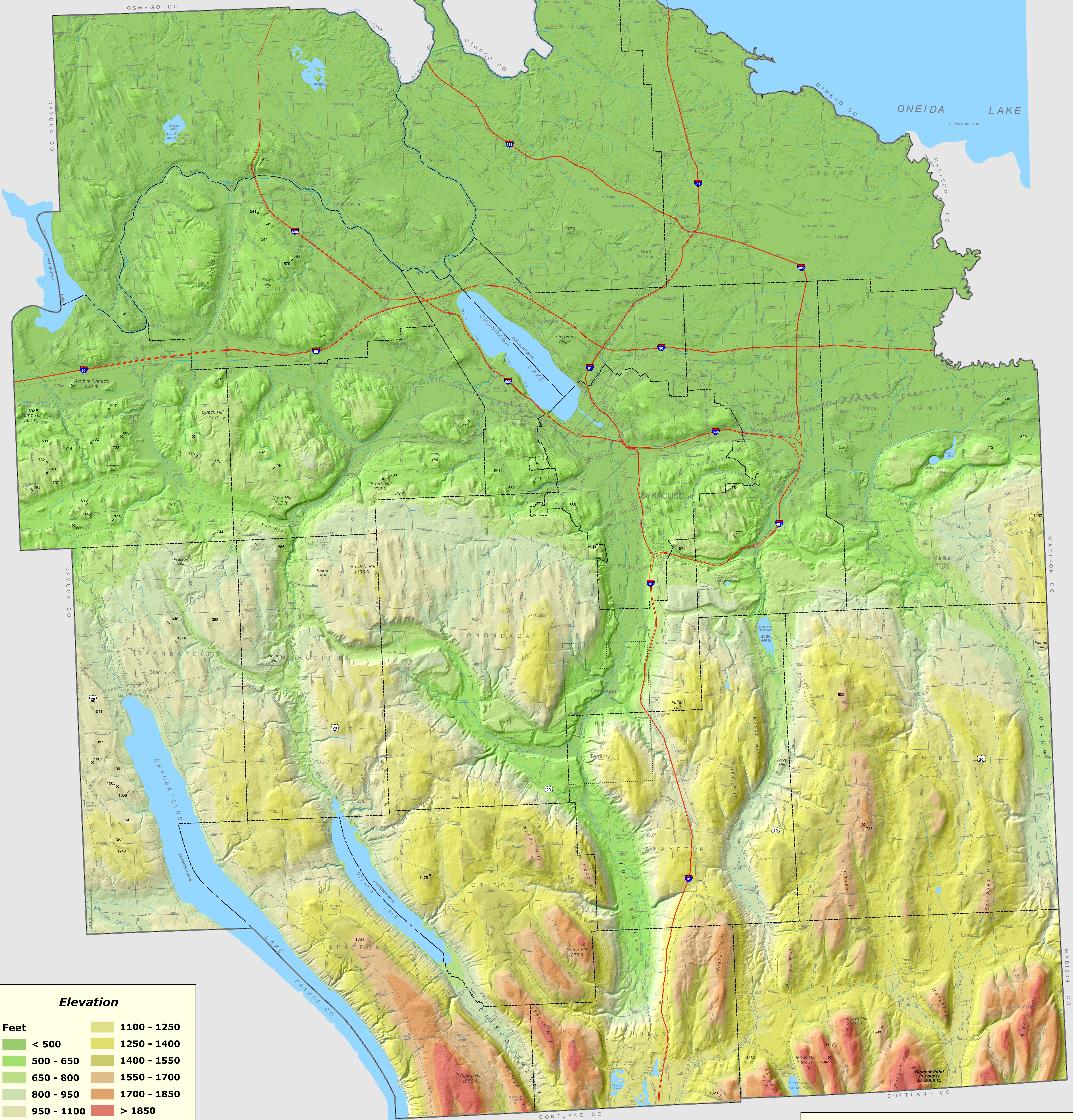


Topographic Map of ONONDAGA COUNTY NEW YORK

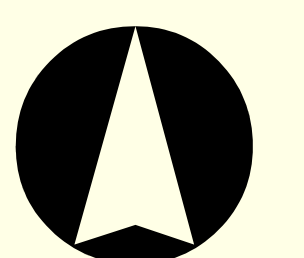
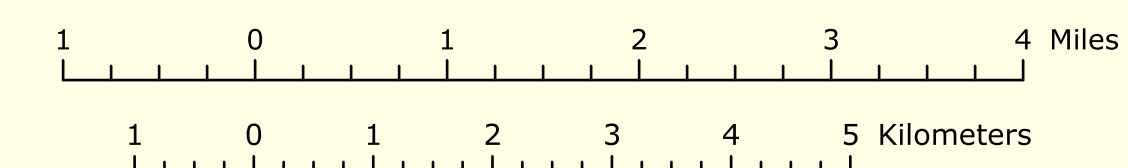


Elevation

Feet	
< 500	1100 - 1250
500 - 650	1250 - 1400
650 - 800	1400 - 1550
800 - 950	1550 - 1700
950 - 1100	1700 - 1850
> 1850	

x¹⁶⁸⁴ Spot Elevation in Feet

Note: Elevation data obtained from United States Geological Survey 10-meter Digital Elevation Models. Topographic feature names and elevations obtained from USGS Topographic 7.5 minute quadrangle maps.



1 INCH = 1 MILE