

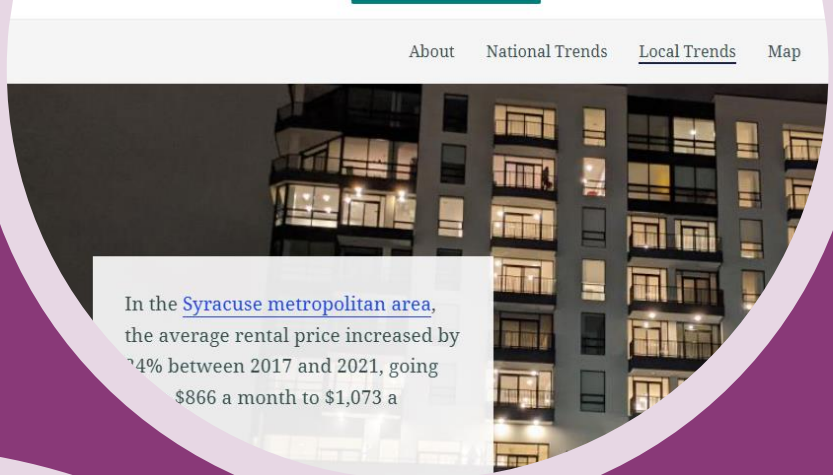


# Onondaga County + Micron: A Shared Future

J. RYAN MCMAHON, COUNTY EXECUTIVE

**PLAN ONONDAGA**  
COUNTY COMPREHENSIVE PLAN





In the [Syracuse metropolitan area](#), the average rental price increased by 74% between 2017 and 2021, going from \$866 a month to \$1,073 a month.



### Website

Planonondaga.net was maintained throughout the life of Plan Onondaga. It included information about the content of the plan, news and updates about the planning process, contextual resources, and ways to get in touch with the project team. The site also contained links to the StoryMap.

### Pop-up

Pop-up events were held at the project Lafayette A and the We Plan Onondaga about the plan ideas and concern collected feedback about Onondaga County.

### Storymap

The Plan Onondaga StoryMap was developed to provide community feedback about the plan's five themes. The StoryMap defines the plan themes and provides local analysis, mapping, and examples of how the plan was developed. It was available throughout the plan's development and provided the basic ideas that the plan was based on.

# An Update

**PLAN ONONDAGA**  
COUNTY COMPREHENSIVE PLAN







## **Strong Centers**

Strong centers are walkable, people oriented places with a mix of jobs, housing, shopping, dining culture, public spaces, entertainment, transportation, and services.



## **Housing and Neighborhoods**

Neighborhoods are often the cornerstones of communities. They are where people live, gather, celebrate, find refuge, and spend much of their time.



## **Community Mobility**

Community Mobility is the ability of people to travel from place to place within Onondaga County. This theme is about enhancing access and options for moving people throughout the county.



## **Greenways and Blueways**

Greenways and blueways are corridors of open space that incorporate diverse natural, cultural, and scenic features.



## **Agriculture**

Agriculture is an important part of Onondaga County's landscape, food system, and economy.





# PLAN ON strong centers

Amenity-rich, vibrant, and walkable centers can strengthen the quality of life and improve the economic stability of local communities.





# **PLAN ON** community mobility

Enhancing mobility means better access and better options to move people throughout the county.







## PLAN ON housing + neighborhoods

To retain as well as attract future residents, housing in the county needs to be affordable, efficient, diverse, and attractive.

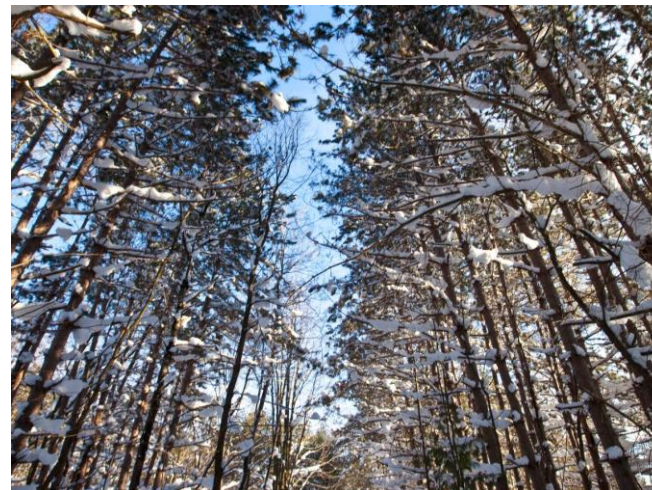
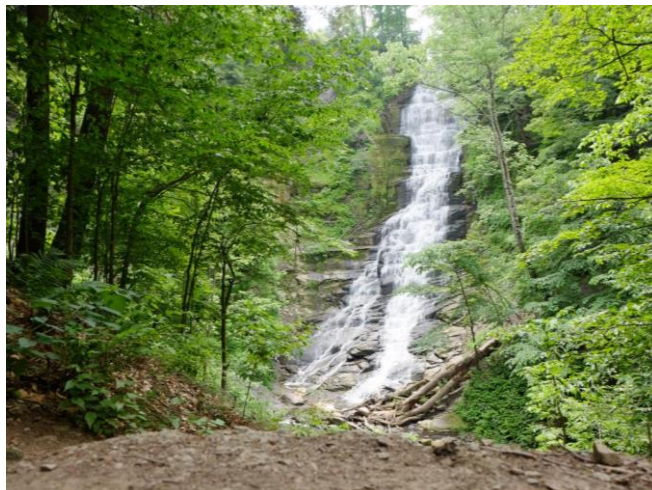






# PLAN ON greenways + blueways

Providing unique opportunities for recreation, wildlife habitat, and ecological protection.







# PLAN ON agriculture

Local agriculture is vital to the future success of Onondaga County's economy, landscape and food system.





# Next Steps

- Finish the Plan
- Release to the Public
- County Legislature Adoption
- Continued Community and Municipal Engagement



<http://plan.ongov.net>

**Follow Us!**



**@PlanOnondaga**



# Looking Ahead



**TOWN  
PLANNING  
GRANTS**



**TOWN CENTERS  
PROGRAM**



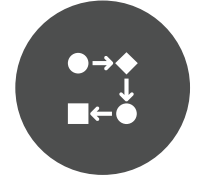
**SAFE STREETS  
FOR ALL  
ACTION PLAN**



**SMT  
PLANNING FOR  
THE FUTURE**



**HOUSING  
MARKET STUDY**



**GREENWAYS +  
BLUEWAYS  
PROGRAM**



**AGRITOURISM  
PROGRAM**



## COUNTY

Planning efforts have included the Onondaga. This section includes planning reports. It considers past and today's themes.

● Housing & Neighborhoods ● Greenways & Blueways ● Community Mobility

1962

### County Plan for the Onondaga-Syracuse Metropolitan Area



This plan was created to guide future public and private actions that would result in safe, convenient, and efficient traffic circulation and recreation and open space areas for the benefit of all citizens.



1972

### A "New Horizon" for Onondaga County-The 1990 Development Plan



In response to a 210% population increase over a 30 year period, this plan presented a series of development policies to aid in "more orderly growth". At this time rapid growth had resulted in drainage/sewer issues and undesired strip commercial development.

A 'NEW HORIZON' FOR

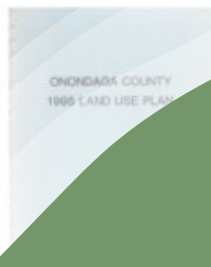
ONONDAGA COUNTY

1977

### 1995 Onondaga County Land Use Plan



This plan provided short- and long-term growth policies which were meant to contain development in areas where necessary infrastructure was 'present or planned-for'.



1995

### Onondaga County A Development Plan for 2010



This plan provided separate policies for the County's development for the guide and s



“How does the Plan change with Micron coming?”



# Onondaga County + Micron: A Shared Future

J. RYAN MCMAHON, COUNTY EXECUTIVE





# Tale of a Mega Project

---

Why America's largest semiconductor manufacturing project chose Central NY



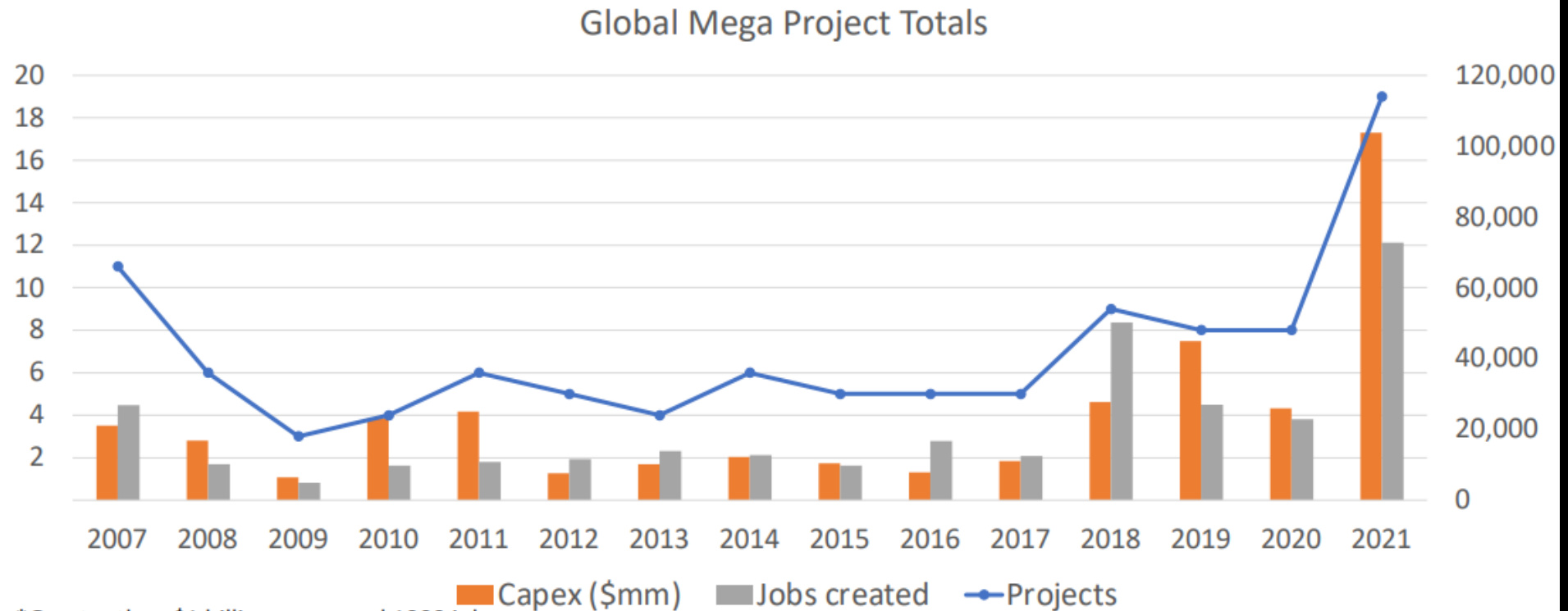




**Strategic Focus = Attract  
a "Mega-Project"**



# Mega-Project\* Trends

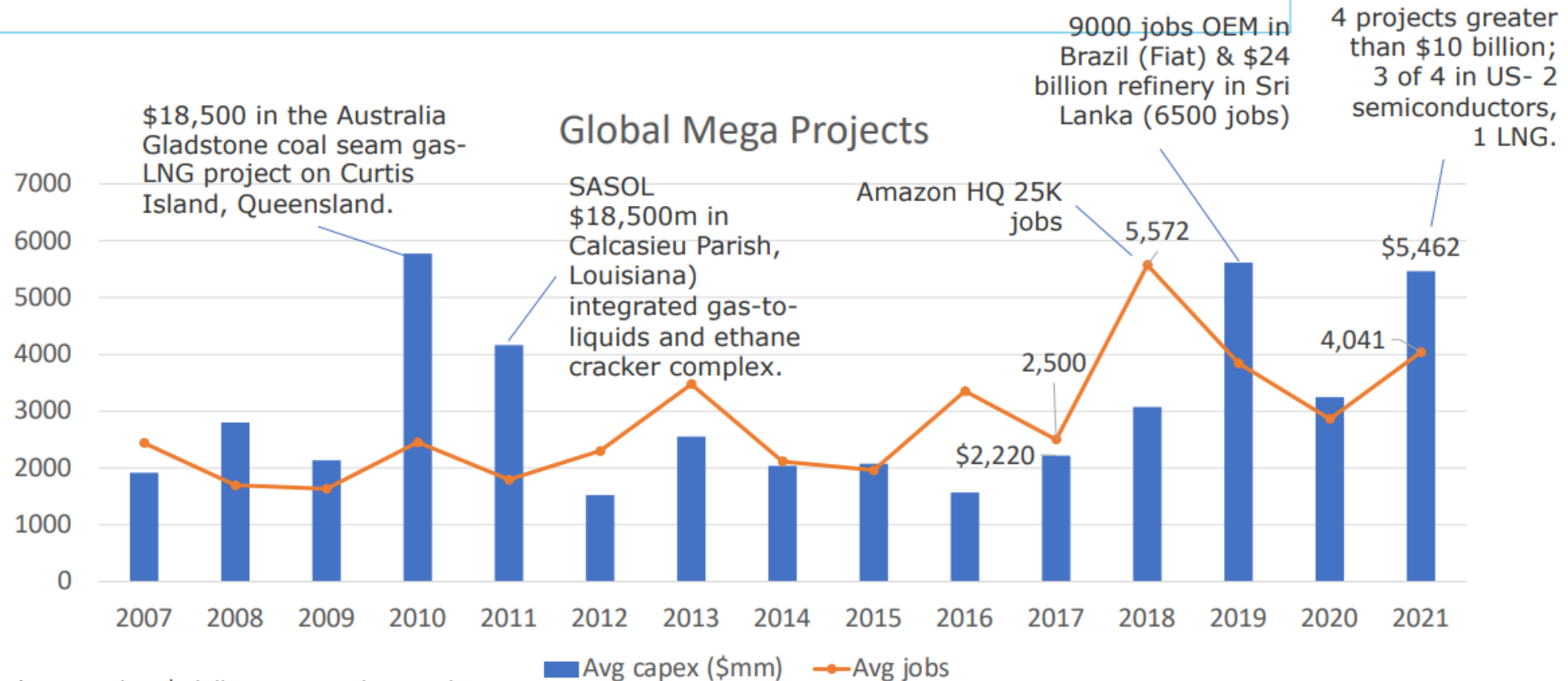


\*Greater than \$1 billion capex and 1000 jobs

Source: FDI Markets

SSG 2022 ANNUAL CONFERENCE | #SSGSANDIEGO2022

# Mega-Project\* Trends



\*Greater than \$1 billion capex and 1000 jobs

Source: FDI Markets



# Timeline - Land Acquisition

---



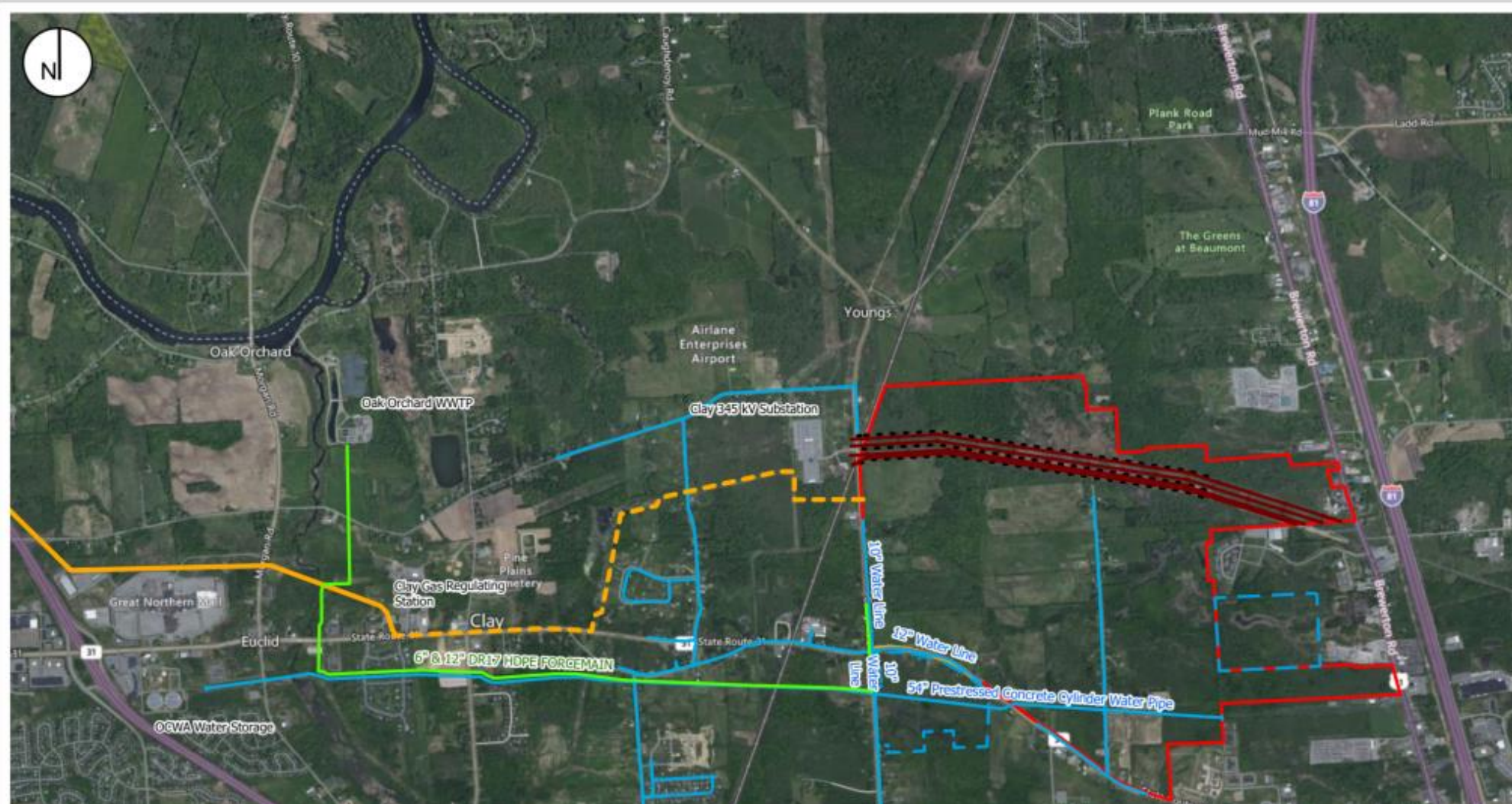


# Land Acquisition

---



# WHITE PINE MEGA CAMPUS



0 1/4 1/2 1 Miles

**Utilities Extended View**

January 26, 2022

Town of Clay,

New York

## Understanding Existing Assets

# Reducing Time to Market



PRE-APPROVALS  
(ENVIRONMENTAL IMPACT  
TRAFFIC, NOISE, AIR, ETC.)



DESIGNS WITH UTILITIES



LAND CONTROL



INDUSTRY SPECIFIC  
STUDIES





# Time to Market Enhancements

Environmental  
Impact  
Statement –  
2012 & 2021

National Grid  
Gas Design and  
Routing Began  
in 2019

Wastewater  
Routing and  
WWTP  
Expansion

National Grid  
Electric Design  
Began in 2019

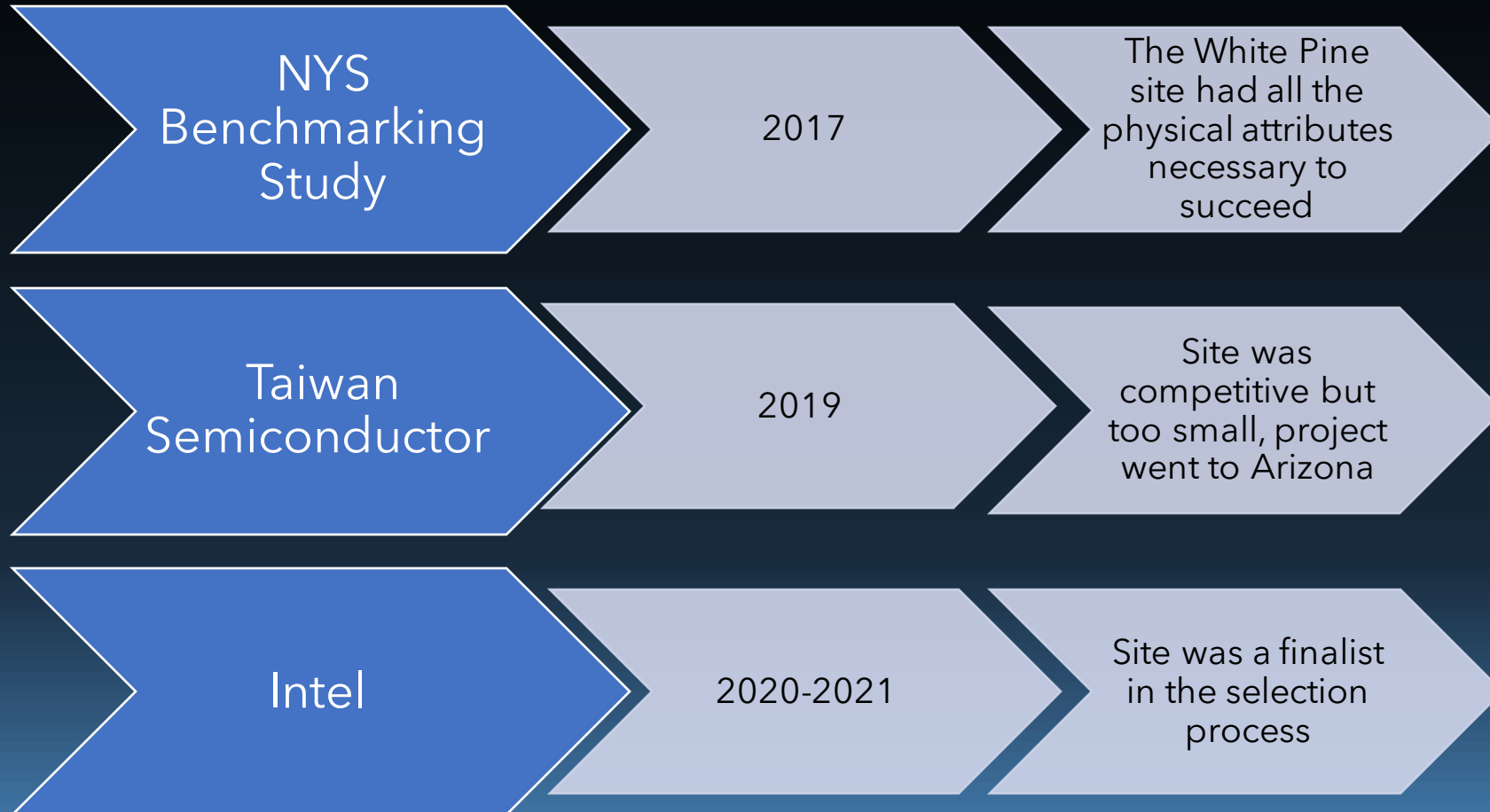
Water Authority  
Routing and  
Expansion  
Options

# Community Cohesion





# Opportunities → Learning



# Learning → Winning



- 2021 - 2022
- Site was ready for the vast majority of Micron's questions
- Electric capability, timelines, design and cost
- Gas capability, routing information, timeline, design, cost
- Water capability, routing information, timeline, design, cost
- Wastewater capability, routing information, timeline, design, cost
- Environmental Impact study completed in 2021 for a Generic Advanced Manufacturing semiconductor project.
- Geotechnical analysis
- Sensitivity Analysis





Onondaga County  
**Planning Federation**

e s t . 1 9 4 7

**Thanks for attending the Onondaga County Planning Federation  
Annual Symposium!**

The next classes begin at 2:15 on the first floor.

