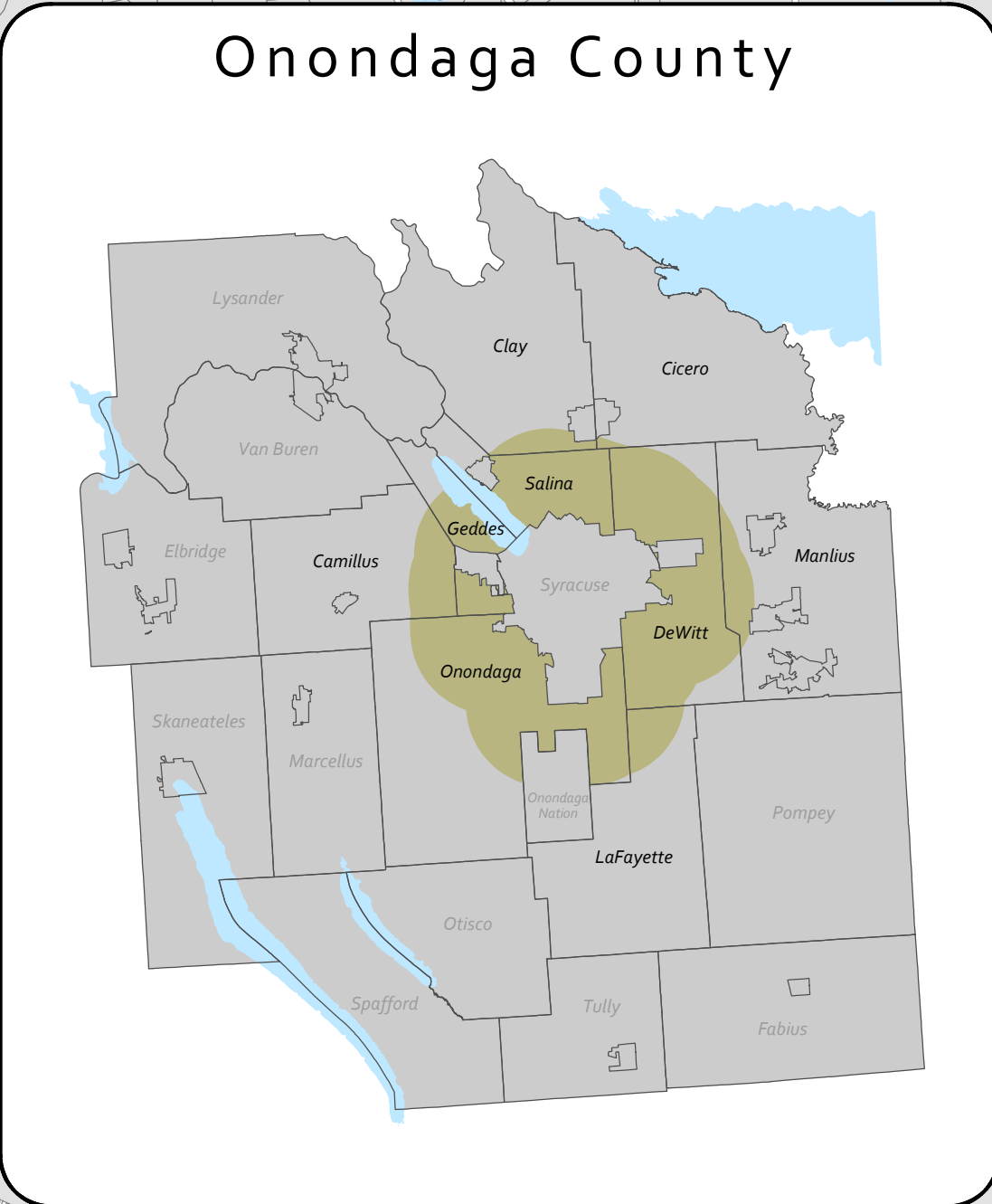
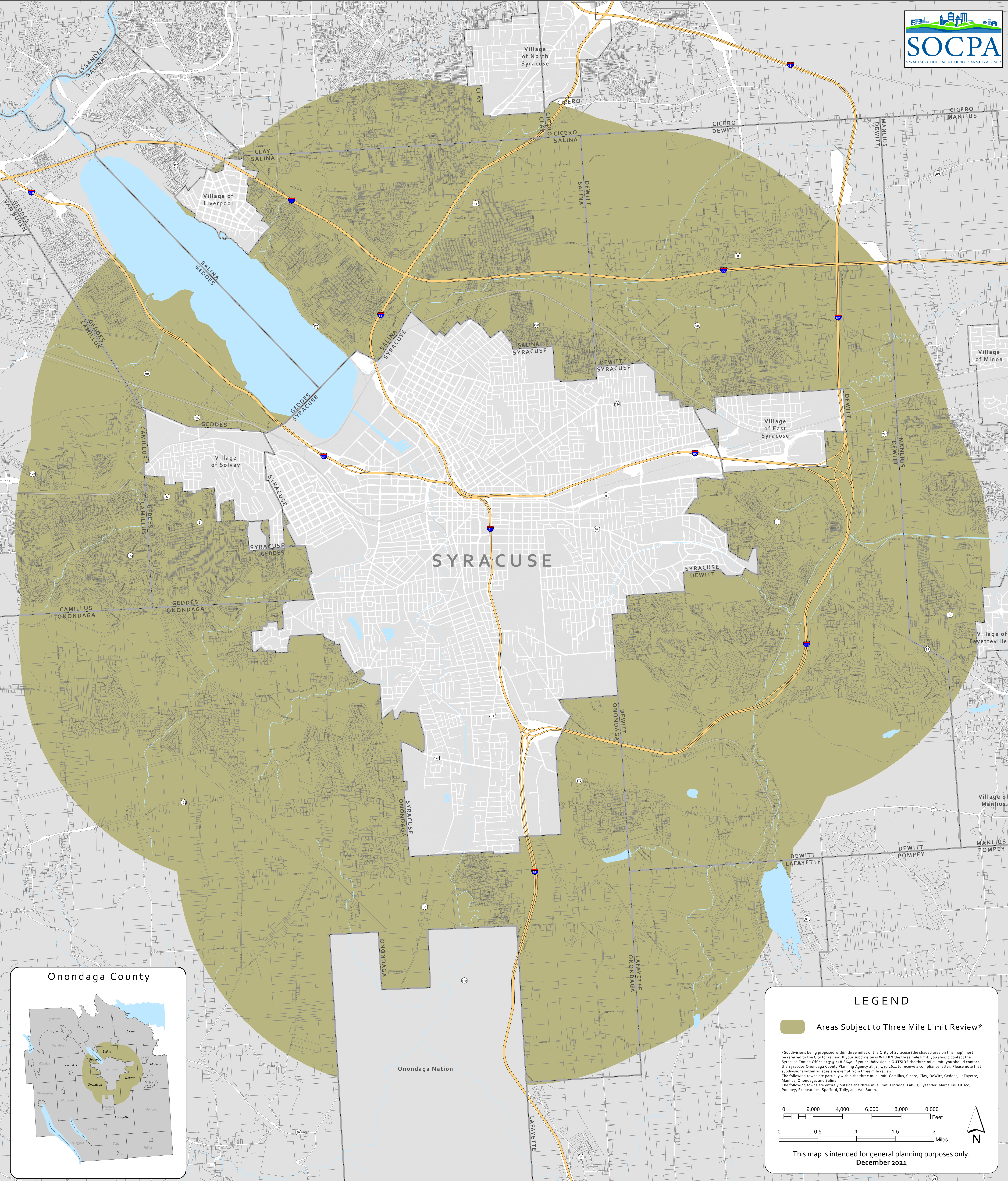
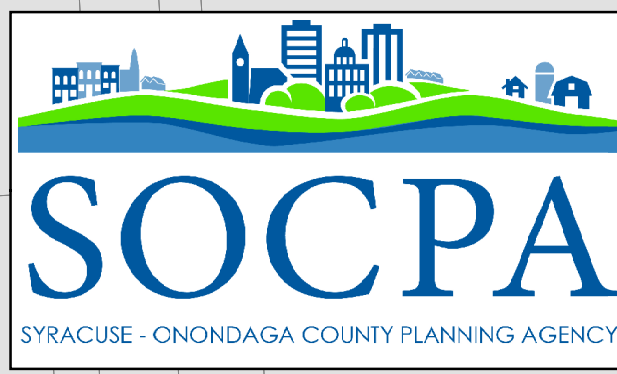


City of Syracuse Three Mile Limit



LEGEND

Areas Subject to Three Mile Limit Review*

*Subdivisions being proposed within three miles of the City of Syracuse (the shaded area on this map) must be referred to the City for review. If your subdivision is **WITHIN** the three mile limit, you should contact the Syracuse Zoning Office at 315-448-8640. If your subdivision is **OUTSIDE** the three mile limit, you should contact the Syracuse-Onondaga County Planning Agency at 315-435-5611 to receive a compliance letter. Please note that subdivisions within villages are exempt from three mile review.
The following towns are partially within the three mile limit: Camillus, Cicero, Clay, DeWitt, Geddes, LaFayette, Manlius, Onondaga, and Salina.
The following towns are entirely outside the three mile limit: Elbridge, Fabius, Lysander, Marcellus, Otisco, Pompey, Skaneateles, Spafford, Tully, and Van Buren.

0 2,000 4,000 6,000 8,000 10,000 Feet

0 0.5 1 1.5 2 Miles

This map is intended for general planning purposes only.
December 2021