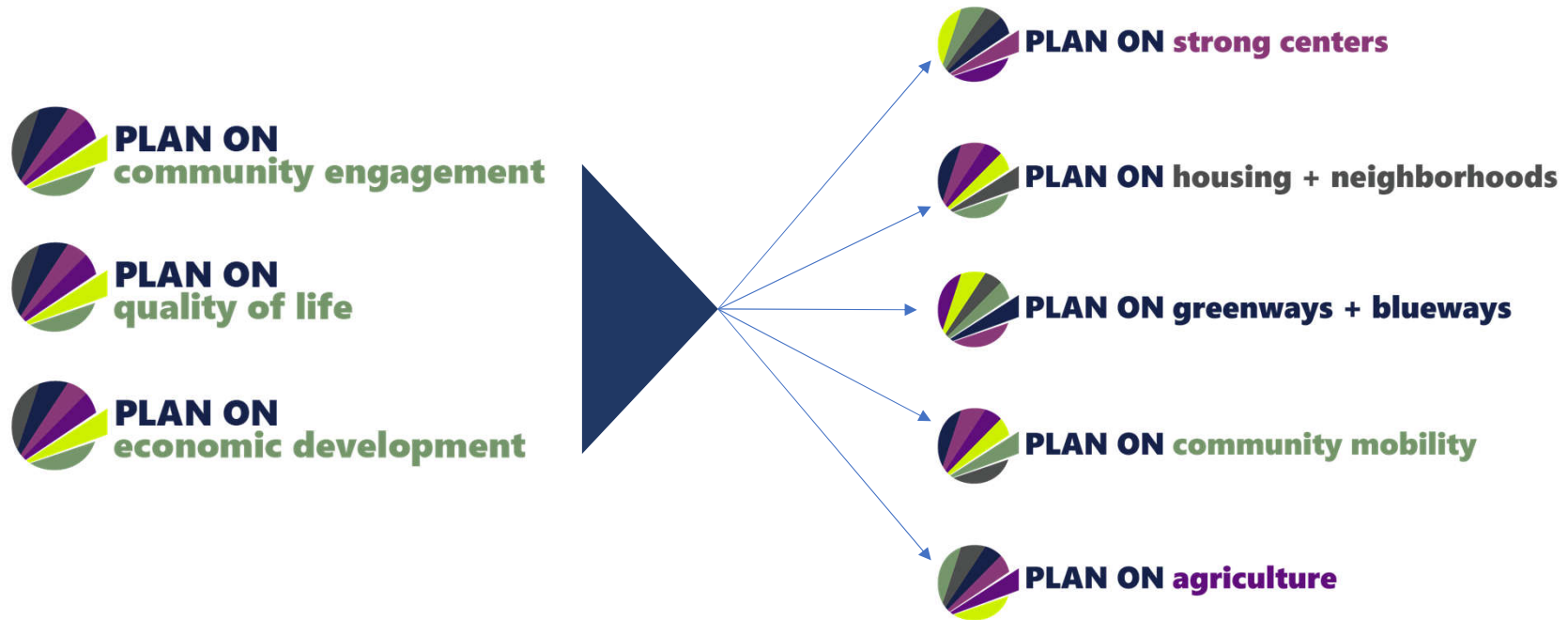


PLAN ONONDAGA
COUNTY COMPREHENSIVE PLAN **greenways + blueways**

EDR



ORGANIZING PRINCIPLES + THEMATIC AREAS



Types of Greenways:

- Urban Riverside
- Recreational Greenways
- Ecologically Significant Natural Corridors
- Scenic and Historic Routes
- **Comprehensive Greenway Systems or Networks**: usually based on natural landforms such as valleys or ridges but sometimes simply an opportunistic assemblage of greenways and open spaces of various kinds to create an alternative municipal or regional [green infrastructure](#).



Blueways:

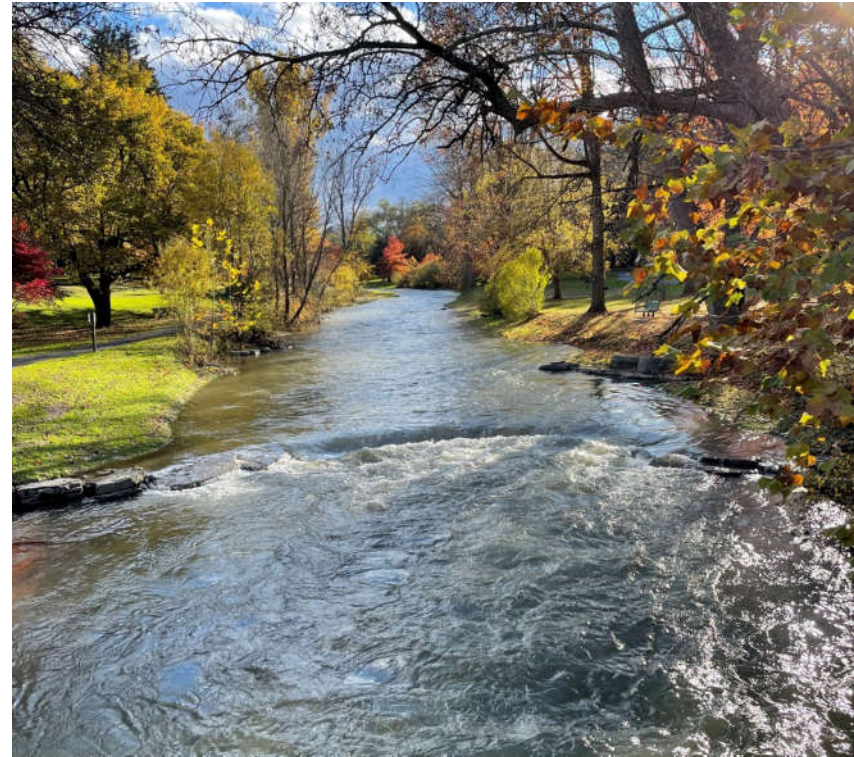
A blueway, or water trail, is simply defined as **marked routes on navigable waterway such as rivers, lakes, canals and coastlines for recreational use**. Similar to greenways, blueways connect existing parks and trails, creating one immersive system of recreation activities that stretches across vast regions.



Ecosystem Services:

The gains acquired by humankind from ecosystems.

- Water Quality
- Air Quality
- Scenic Beauty – Define our landscape.
- Recreation: Hunting, fishing, boating, mountain biking, hiking, walking, kite surfing, swimming, bird watching, hang gliding, ...
- Wildlife Habitat and Habitat Corridors – local and global
- Green Infrastructure - Flood Retention and Mitigation
- And many more...



Economic Impact

National Spending:

\$121B on recreation goods,
\$51B spent in local economies on recreation destinations.
6.1M jobs.

Enhanced Property Values

Protected open space has a Direct Impact on nearby property values. They go up over time.

- Early Study by Frederick Law Olmstead
1880: The Emerald Necklace Boston
- IRS Contiguous Parcel Rule
- Everyone Wants to Live Near the
Lake/Park/Beach/Woods...



Value of Blueways and Greenways

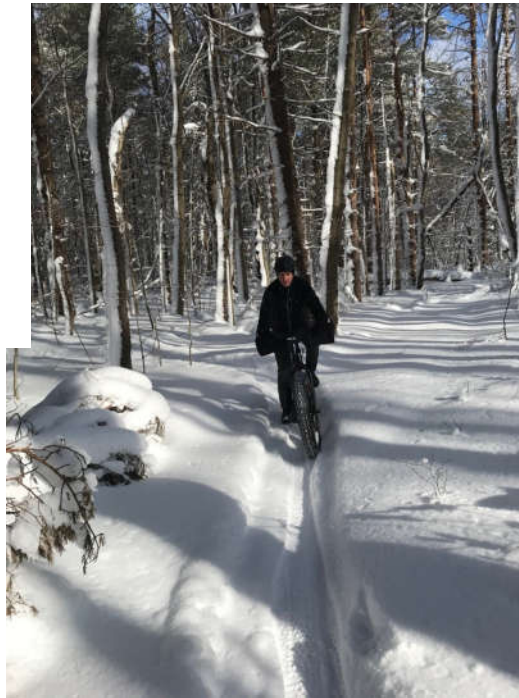
Stewardship:

Inherent responsibility of government and human beings.

Quality of Life:

These are places where we live. We need to invest in them like any other infrastructure.

"Everyone should go on vacation for an hour everyday." Dr. Parker



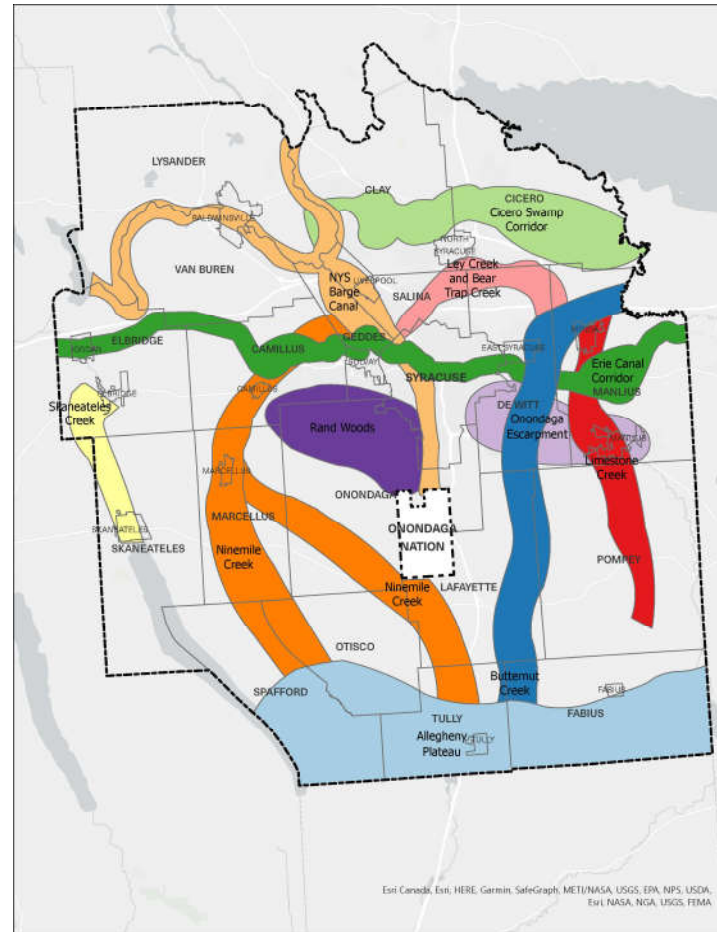
 **PLAN ON greenways + blueways**

Map and Inventory to Define Blueways and Greenway Systems at county level.

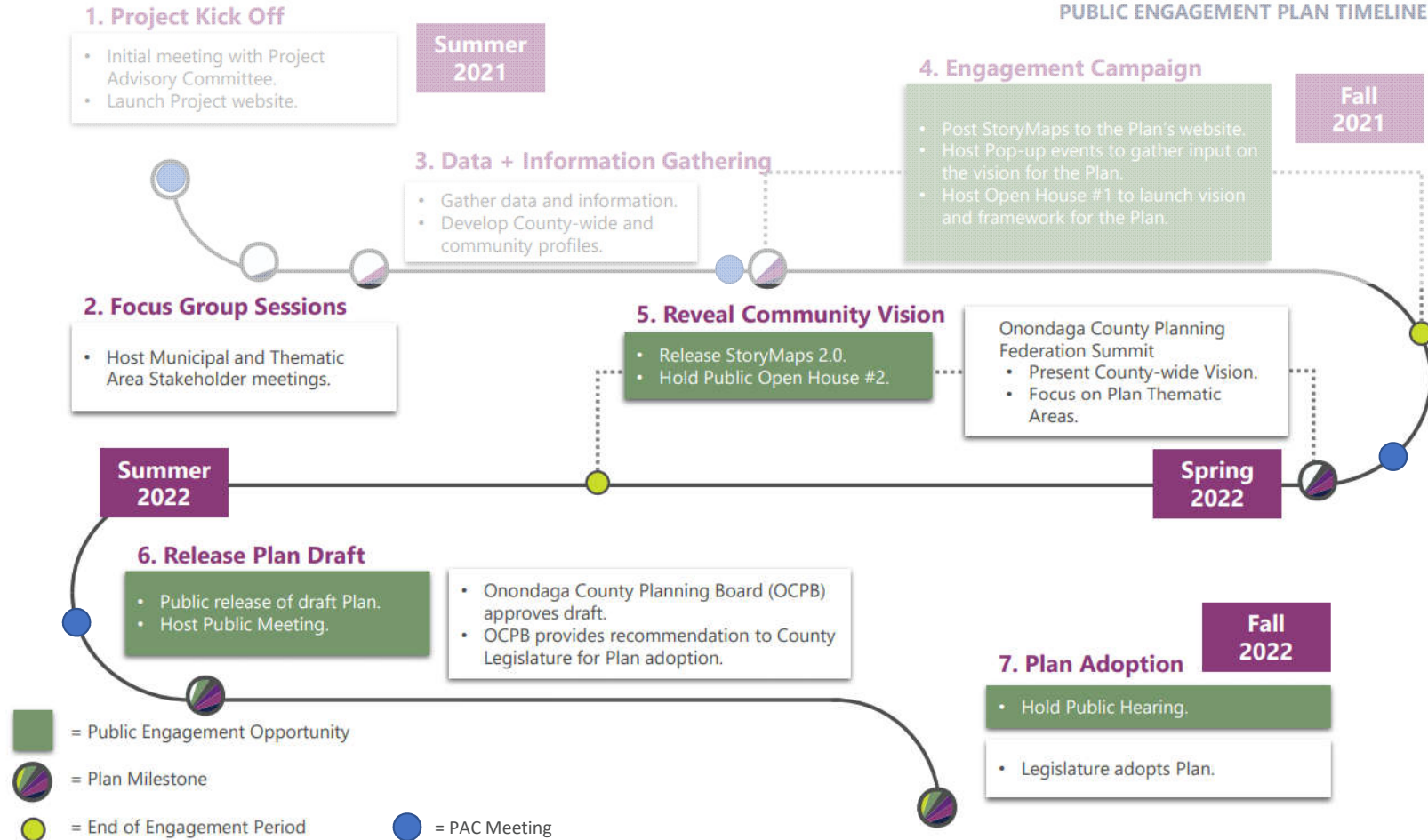
Identify Strategies, Approaches, Programs to Conserve and Protect Resources in Greenways and Blueways and make local connections to them.

Work with Municipalities to develop and implement land use tools like conservation subdivisions to protect resources, and provide recreational resources that enhance the community and quality of life.

What else?



PUBLIC ENGAGEMENT PLAN TIMELINE



NEXT STEPS

www.plan.ongov.net



Visit the
project
website



Subscribe



Connect with
Us



Submit a
Comment

NEXT STEPS

www.plan.ongov.net

