

Key Economic and Fiscal Indicators

Inside this issue:

Indicator	Period	2011	2010	Page
2011 Budget Forecast as of 3/31/2011 Results	Q1			2
Unemployment Rate: Onondaga County	March	7.4%	8.5%	5
Employed Persons by Month (in 000's): Onondaga County	March	210.0	210.1	5
Employed Persons yr-over-yr (in 000's): Onondaga County	March	(0.1)	(4.6)	5
Overall Consumer Confidence: Syracuse MSA	Q1	61.5	63.6	6
Consumer Price Index (all items) - Inflation Rate	March	2.7%	2.3%	6
Weighted Average County Interest Rate	March	0.79%	0.90%	6
Reconciled Quarterly Sales Tax Collections % Chg YTD	Q1	3.0%	3.7%	6
Auto Sales CYTD: Onondaga County	Feb	3,318	2,213	7
Gasoline Prices per gallon paid by Onondaga County	March	\$3.11	\$2.35	7
Retail Gasoline Prices per gallon in Upstate NY	March	\$3.70	\$2.90	8
Onondaga County Clerk Fees (in thousands)	Q1	\$622.0	\$473.4	8
Lis Pendens CYTD	March	279	388	8
Existing Home Sales CYTD: Onondaga County	March	496	567	8
Average Median Home Price YTD: Onondaga County	March	\$118,000	\$123,500	8
Onondaga County Filled Positions: January	January	3,773	4,060	9
Average Monthly Public Assistance Caseloads YTD	March	6,291	5,627	9
Average Monthly Medicaid Caseloads YTD	March	53,729	49,091	9

CYTD = Cumulative Year to Date

2011 Budget Forecast as of 3/31/2011 Results

<u>Revenues</u>	2010 <u>Actual</u>	2011 <u>Adopted</u>	2011 <u>Modified</u>	2011 <u>Forecast</u>
PROPERTY TAX LEVY	\$184,064,270	\$153,821,817	\$153,821,817	\$153,821,817
DEFERRED/UNCOLLECTIBLE	(\$12,901,578)	(\$12,436,773)	(\$12,436,773)	(\$12,577,521)
PRIOR YR COLLECTIONS	\$3,853,593	\$4,704,368	\$4,704,368	\$4,087,690
PILOTS/INTEREST & PENALTIES	\$8,067,120	\$7,599,888	\$7,599,888	\$7,599,888
ROOM OCCUPANCY TAX	\$4,968,791	\$6,219,577	\$6,219,577	\$6,219,058
ABSTRACT CHARGES	\$8,587,424	\$10,983,599	\$10,983,599	\$10,983,599
SALES TAX - COUNTY PORTION	\$145,905,047	\$197,474,730	\$197,474,730	\$200,407,302
SALES TAX - MUNICIPALITIES/SCHOOL PORTION	\$147,759,335	\$95,924,741	\$95,924,741	\$99,700,885
STATE AID	\$93,289,325	\$100,664,620	\$100,664,620	\$92,171,843
FEDERAL AID	\$78,235,372	\$74,588,594	\$74,588,594	\$84,194,082
INTERDEPARTMENTALS	\$49,321,749	\$47,734,463	\$47,734,463	\$47,581,610
ALL OTHER	\$46,241,878	\$47,041,353	\$47,181,353	\$47,018,043
PROJECT FUND CLOSE-OUTS	\$807,973	\$1,368,921	\$1,368,921	\$1,368,921
FUND BALANCE	\$0	\$1,663,739	\$5,109,437	\$5,109,437
Total Revenues	\$758,200,299	\$737,353,637	\$740,939,335	\$747,686,654
<u>Appropriations</u>				
MANDATED PROGRAMS	\$219,684,696	\$240,556,221	\$240,556,221	\$241,905,729
SOCIAL SERVICES ADMIN	\$57,551,617	\$61,529,850	\$61,538,567	\$61,082,466
SOCIAL SERVICES - POS	\$8,709,780	\$8,944,001	\$8,944,001	\$8,743,875
PUBLIC SAFETY	\$102,263,974	\$114,040,421	\$114,481,705	\$115,317,050
FACILITIES	\$15,968,532	\$17,177,637	\$18,480,651	\$18,407,317
INFORMATION TECHNOLOGY	\$10,641,810	\$11,411,732	\$11,915,303	\$11,915,307
DEBT SERVICE	\$12,978,076	\$17,196,714	\$17,196,714	\$17,196,714
HEALTH	\$45,999,820	\$43,968,308	\$44,575,611	\$43,689,162
HIGHWAYS	\$17,837,017	\$19,446,094	\$19,446,094	\$19,446,094
PARKS	\$10,765,828	\$11,046,997	\$11,312,508	\$11,169,873
OCC	\$8,864,000	\$8,864,000	\$8,864,000	\$8,864,000
LIBRARIES	\$4,393,452	\$4,427,101	\$4,427,101	\$4,427,101
SALES TAX - MUNICIPALITIES/SCHOOL PORTION	\$147,759,335	\$95,924,741	\$95,924,741	\$99,700,885
INTERDEPARTMENTALS	\$43,762,963	\$41,291,322	\$41,291,322	\$41,388,693
ALL OTHER	\$41,217,826	\$41,528,498	\$41,984,796	\$41,476,561
Total Appropriations	\$748,398,726	\$737,353,637	\$740,939,335	\$744,730,827
Surplus/(Deficit)	\$9,801,573	\$0	\$0	\$2,955,827

Budget Categories Defined

Revenues

Property Tax Levy - Final countywide tax levy per adopted budget

Deferred / Uncollectable - The inverse of our historical average collections rate applied to the current years total combined county and town tax levy, including returned school taxes and special district charges, as NYS law requires us to make whole other entities outside the City for delinquent taxes.

Prior Year tax collections - Amount of collections received from all prior year delinquent taxes.

Pilots / Interest & Penalties - Pilot revenue and interest and penalties received on delinquent real property taxes.

ROT - Room Occupancy Tax - Amounts included as revenue in the general fund from this source.

Abstract charges - Amounts included in the general fund from this source which is mostly the City of Syracuse (note - other funds, principally Library receive abstract revenue).

Sales Tax / County Portion - County share of revenues from this source according to the new sharing formula.

Sales Tax Municipalities / Schools - Town, City, School share of revenues from this source according to the new sharing formula.

State Aid - Revenue derived from NYS, formula and block grant sources.

Federal Aid - Revenue derived from the Federal Government.

Interdepartmental - Revenue from indirect cost allocations, charges from overhead departments and other direct charges between departments for services.

All Other - Various sources of revenue including E911 surcharge, County Clerk fees, public health fees, park fees, Medicaid reimbursement for EI services and Mental Health services, reimbursement from third parties for various county services provided. The overriding accounting treatment of revenue in this category, which distinguishes it from state or federal aid, is the revenue is a fee or payment for service as opposed to a reimbursement of expense incurred (state or federal aid definition).

Project Fund Close Out - Excess funds in capital and grant project accounts closed to the general fund.

Fund Balance - Portion of fund balance reserve utilized as revenue in the general fund or other funds.

Expenses (gross dollars)

Mandated Programs - Gross cost of Medicaid, Family Assistance, Safety Net, Foster Care, Juvenile Delinquents, State Training, Special Children Services, Assigned Counsel, Hospitalization.

Social Service Admin. - Gross cost of administration of mandated programs.

Social Service Purchased Services - Gross cost of mostly mandated child preventative and adult protective services.

Public Safety - Gross cost of Corrections, DA, E911, Emergency Management, Probation, Hillbrook, Sheriff Police and custody divisions.

Facilities - Gross cost of facilities Management

Information Technology - Gross cost of IT services

Debt Service - General Fund Debt Service net of reserve for bonded debt.

Health - Gross cost of Health, Mental Health, and Center for Forensic Sciences

Highways - General fund cost of supporting the Highway and Road Machinery Funds

Parks - Gross cost of Parks and Recreation Department

OCC - General Fund cost of support for OCC

Libraries - General Fund cost of support for OCPL

Sales Tax - Municipalities / School Portion - Sales tax portion shared under the new sharing formula

Interdepartmental - Indirect cost allocations, charges from overhead departments and other direct charges between departments for services.

All Other - Gross Cost for Authorized Agencies, administrative departments, elected officials other than DA and Sheriff.

Unemployment Rate

March, 2000 - 2011 (not seasonally adjusted)

2000	4.0	5.0	4.1	3.7
2001	4.7	4.6	4.7	3.8
2002	5.7	6.6	5.9	5.4
2003	5.9	6.5	5.8	5.1
2004	5.8	6.7	6.3	5.6
2005	5.2	5.1	5.2	4.7
2006	4.7	5.0	5.2	4.7
2007	4.9	4.4	4.8	4.7
2008	5.1	5.0	5.6	5.0
2009	8.6	8.2	8.6	7.3
2010	9.7	9.1	9.1	8.5
2011	8.8	8.0	8.3	7.4

¹ U.S. unemployment rates are Seasonally Adjusted.

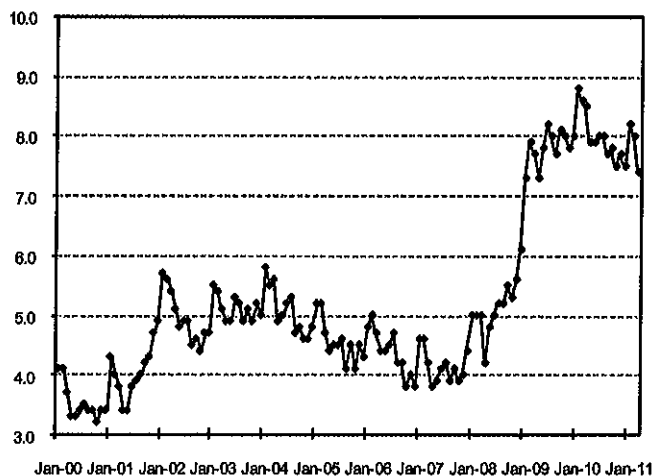
² Syracuse MSA includes Onondaga, Oswego and Madison county.

Source: Bureau of Labor Statistics, New York State Department of Labor

NOTE: All employment data is preliminary and subject to revisions.

Unemployment Rate

Onondaga County, January 2000 - March 2011

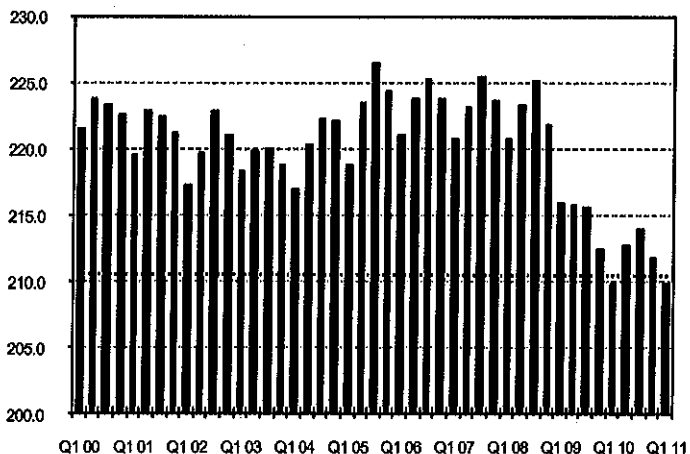


Source: U.S. Bureau of Labor Statistics, New York State Department of Labor

The unemployment rate in Onondaga County still hovers near 8.0%. However, in March 2011—the rate is down from 7.4% compared to 8.5% in March 2010. Although the rate has dropped, there are less employed persons, year-over-year.

Average Employed Persons by Quarter

Onondaga County, First Qtr 2000 - First Qtr 2011 (in 000's)



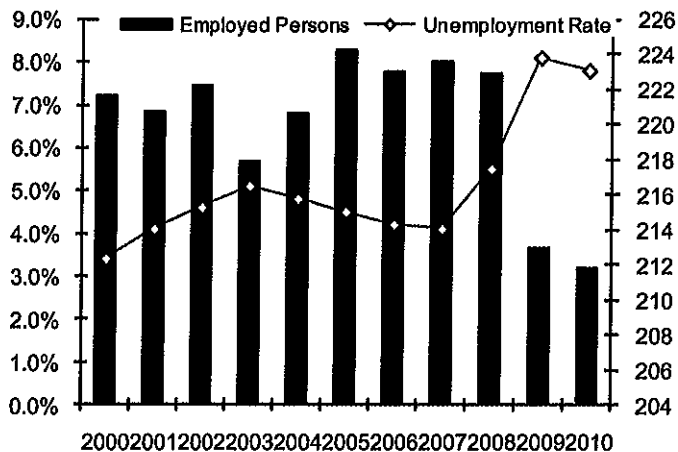
Employment accounts for Onondaga County residents only.

Source: New York State Department of Labor

The first quarter 2011 average employment mirrors the first quarter 2010 employment. The local economy remains stable.

Labor Force

Onondaga County, March, 2000 - 2011 (in thousands)



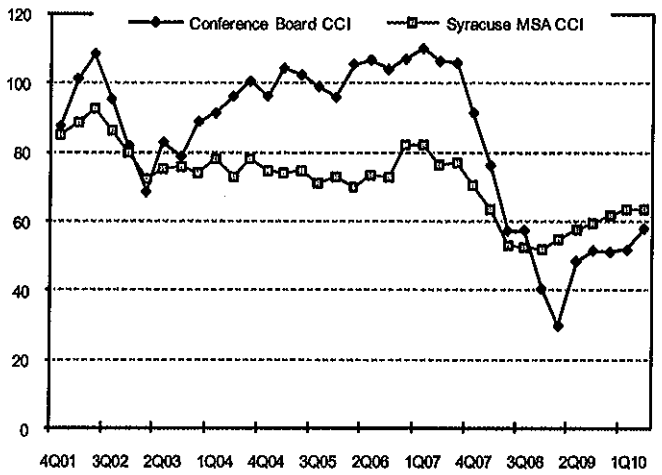
Employment accounts for Onondaga County residents only.

Source: New York State Department of Labor

There were 210,000 employed in March 2010, 100 less than in March 2009. The unemployment rate dropped while employment remained fairly stable, because the labor force shrank over the same time period by 2,700. The labor force is a measure of employment and the pool of those actively seeking employment.

Consumer Confidence

Fourth Quarter 2001 - First Quarter 2011

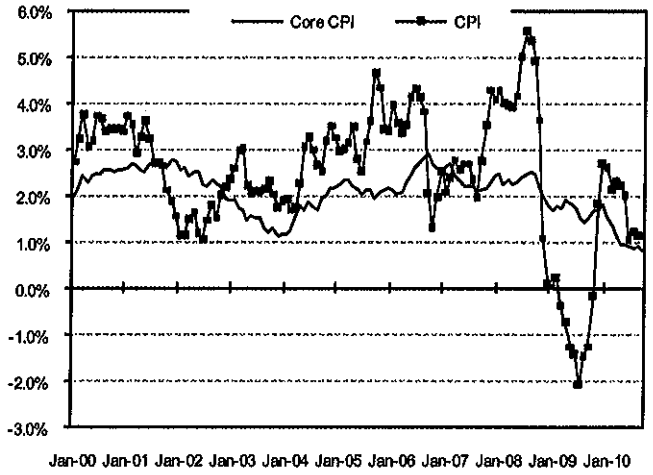


Source: The Conference Board, Siena College Research Institute

Says Lynn Franco, Director of The Conference Board Consumer Research Center: "...Consumers' inflation expectations rose significantly in March and their income expectations soured, a combination that will likely impact spending decisions. On the other hand, consumers' assessment of current conditions improved, indicating that while the short-term future may be uncertain, the economy continues to expand."

Consumer Price Index

U.S. City Average Inflation, Jan 2000 - March 2011 (1982-1984 = 100)

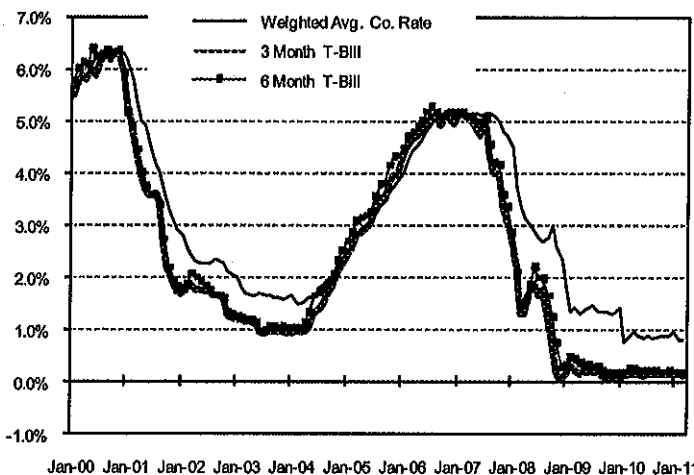


Source: Bureau of Labor Statistics (data not seasonally adjusted)

A line graph most clearly represents the extreme volatility of the nations inflation rates. As of March 2011, the inflation rate has risen from 2.3% to 2.7% in March 2010. The core CPI measures inflation excluding food and energy items. This Fed aims to steady core inflation rates around 2.0%. As of March the core inflation rate stood at 1.2%.

Weighted Average County Interest Rate

Onondaga County, January 2000 - March 2011

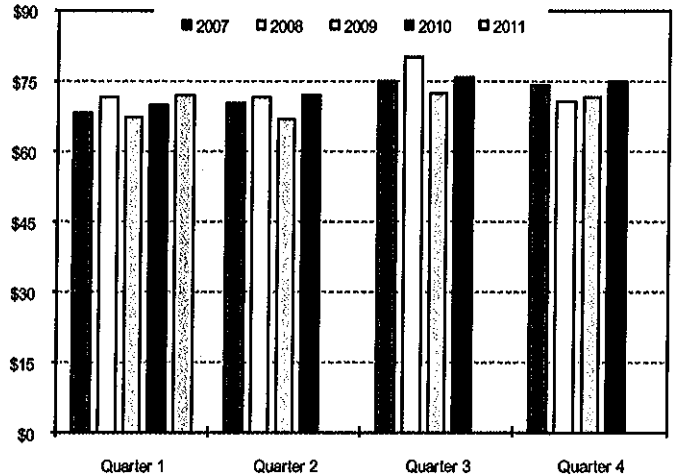


Source: Federal Reserve Board and Division of Management and Budget

The County's weighted average interest earnings rate stood at 0.79% in March 2011 versus 0.90% in March 2010. The 3 and 6 month T-bills have settled low as well, with the 3 and 6 month T-bills rates at 0.10% and 0.16%, respectively, in March 2011.

NYS Reconciled Sales Tax Collections

Onondaga County, First Quarter 2000 - First Quarter 2011 (in millions)

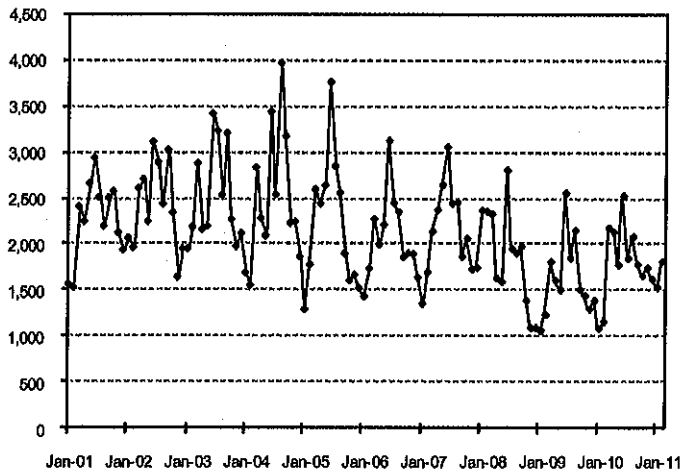


Compiled by Division of Management and Budget

The cumulative New York State Reconciled Sales Tax Collection rate came in at \$71.87M in the first quarter of 2011. Compared to the same period in 2010, the collection rate was 3.0% higher in 2011.

Auto Sales

Onondaga County, January, 2001 - February 2011 (in 000's)

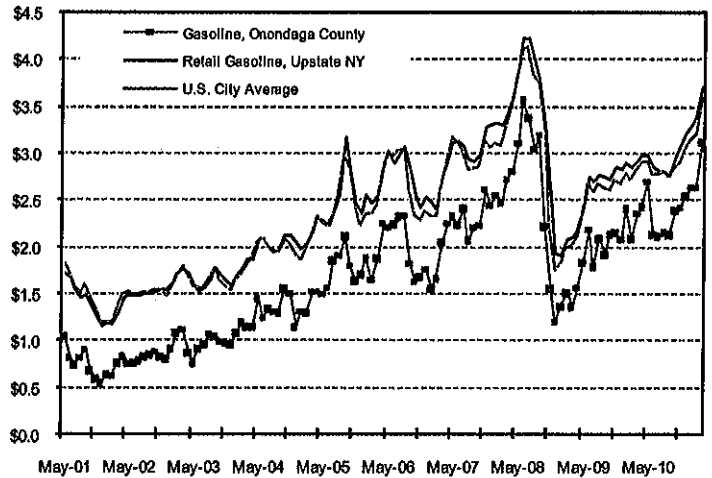


Source: R.L. Polk

Year-to-date 2011, cumulative auto sales total 3,318 which is up nearly 50.0% over the same time period last year. Year over year, February auto sales are up 57.7% over February 2010.

Gasoline Prices

May 2001 - March 2011 (NOTE: County prices are tax exempt)

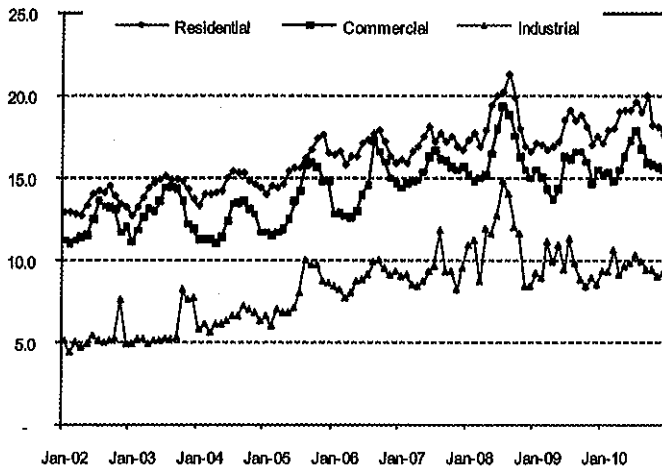


Source: NYSDERDA and Bureau of Labor Statistics

Gasoline prices are on the rise, again. In March, the price paid by the County for gasoline was \$3.11/gallon. On average, gasoline prices paid by Onondaga County rise nearly \$.30/gallon each year. The Energy Information Administration short-term energy outlook projects retail gasoline prices in 2011 at \$3.70/gallon (including taxes); and 2012 at \$3.80/gallon. NOTE: State and Federal taxes on gasoline account for approximately \$0.45 to \$0.50 per gallon.

Average Electric Rates

Statewide (NYS), January 2002 - December 2010 (cents per kWh)

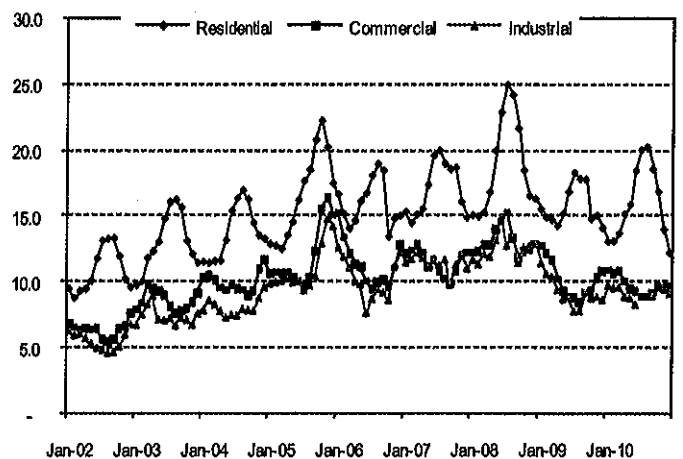


Source: NYSDERDA and Energy Information Administration

The average electric rates continue on an upward trend. However, as represented in the chart, rates have steadied in 2010. The Energy Information Administration projects rates to rise in 2011 over 2010 rates.

Average Price of Natural Gas

Statewide (NYS), January 2002 - December 2010 (\$/MCF)

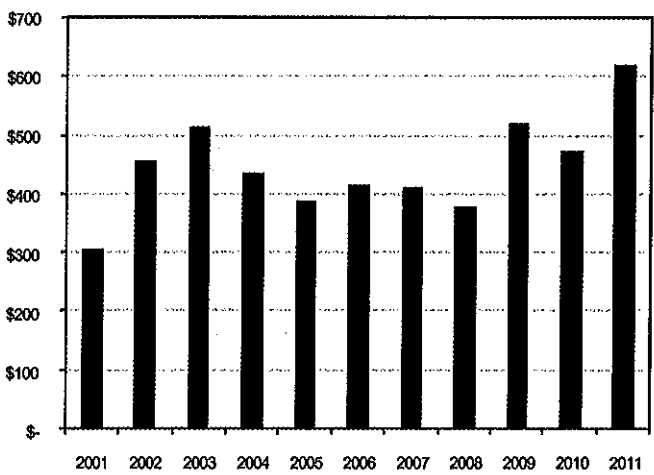


Source: NYSDERDA and Energy Information Administration

The average price of natural gas fluctuates for all users seasonally. Although, the last month of data available (December 2010) is lower than the same month of the prior year, the prices are on an upward trend and the Energy Information Administration projects prices of natural gas to rise in 2011 over 2010 prices.

Onondaga County Clerk Fees

Onondaga County, First Quarter, 2000 - 2010 (in thousands)

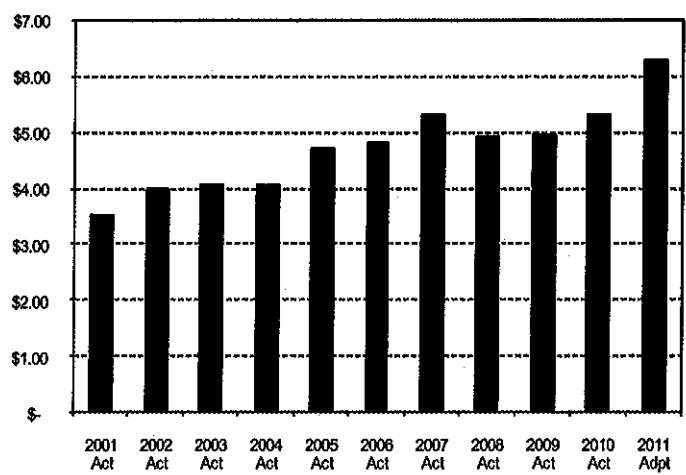


Compiled by the Division of Management and Budget

Clerk fees include all fees collected by the County Clerks Office. The bulk of these collections are fees associated with mortgages (recorded deeds, recorded mortgages, mortgage discharges and assignments). The chart above represents actual fees collected in the first quarter by year. This year, collections are up 31.4% over first quarter 2010.

Room Occupancy Tax Collections

Onondaga County, 2001 Actual - 2011 Adopted (in millions)

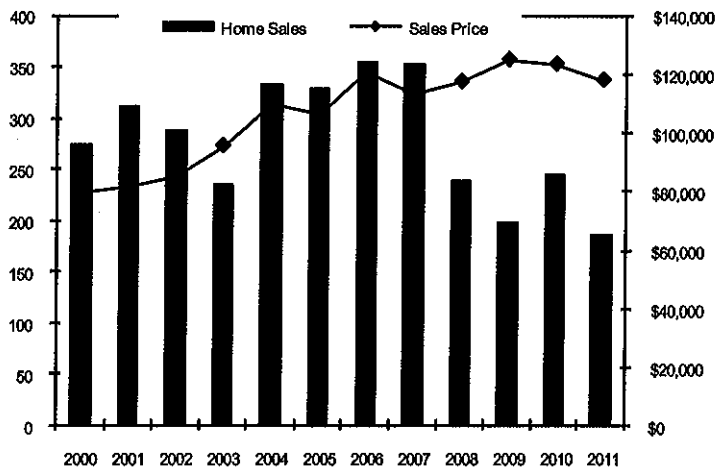


Compiled by the Division of Management and Budget

Room Occupancy Tax collections include room occupancy tax collections and interest and penalties on room occupancy tax collections for all funds. The sum of collections in 2010 was up over 2009 and 2008. 2011 collections were adopted at nearly \$1M over 2010 Actual collections.

Residential Real Estate Activity

Onondaga County, March, 2000 - 2011

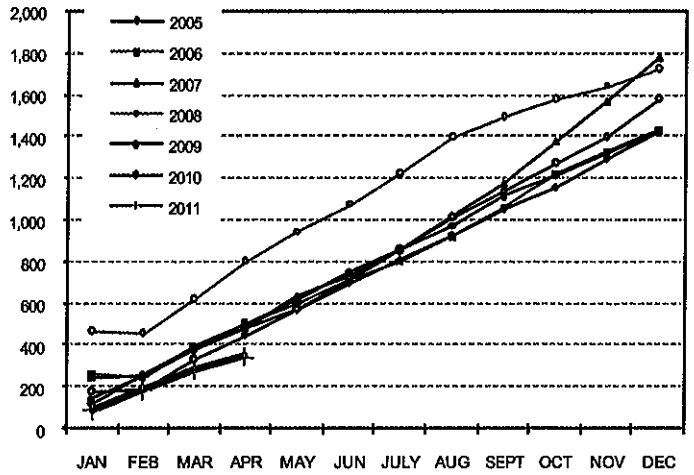


Source: Greater Syracuse Association of Realtors

In March 2011, home sales are down 24.1% over March 2010, while the median sales prices fell 4.5% to \$118,000 over the same time period. In 1998 the average monthly median sales price was \$82,017.

Lis Pendens

Onondaga County, Cumulative YTD, January 2005 - March 2011

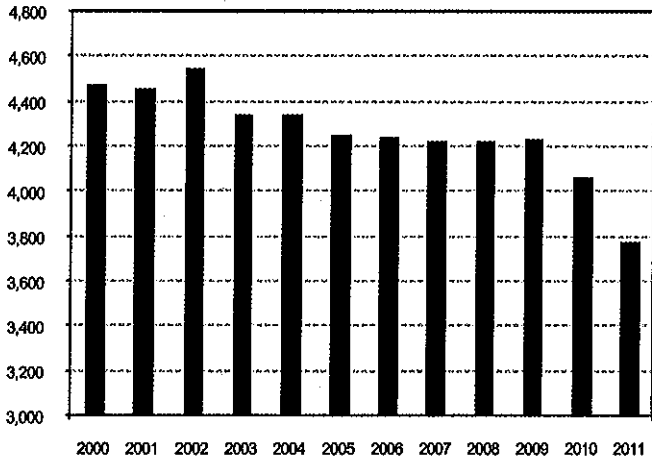


Source: Onondaga County Clerk's Office

Lis pendens is the first step in the filing for foreclosure. It is a clear indication of housing market sentiment and consumers well being. With the recession, came and onslaught of foreclosures which has since settled. Year-to-date, lis pendens counts in Onondaga County are 32.5% lower over last year during the same time period.

Filled Positions

Onondaga County, January, 2000 - 2011

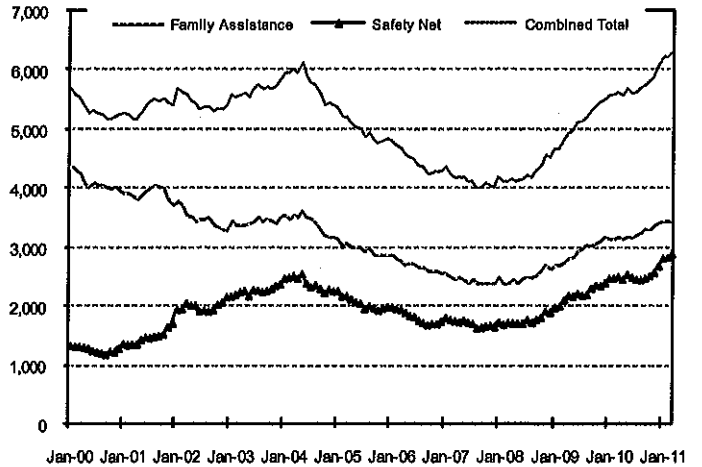


Compiled by the Division of Management and Budget

The chart above represents the number of filled positions on the county's roster as of January by year. Since 2009, there has been a significant reduction in filled positions. In January 2011, there were 3,773 filled positions which is 7.1% less than in January 2010 and nearly 11% less than in January 2009.

Public Assistance Caseloads

Onondaga County, January 2000 - March 2011 (in thousands)

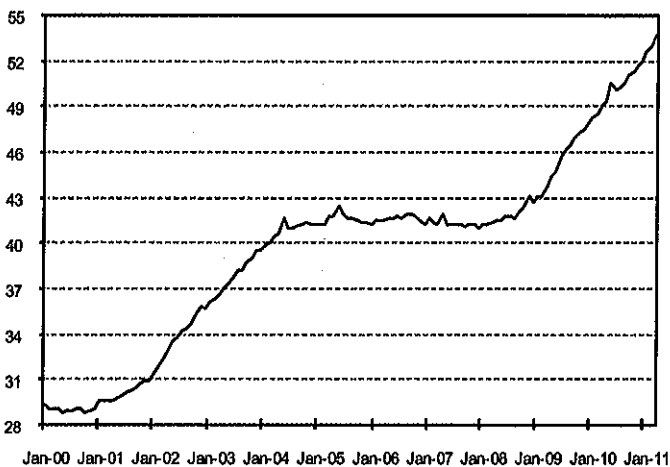


Compiled by the Division of Management and Budget

Public Assistance caseloads continue to rise — a natural extension of an economic downturn. First quarter 2011, Family Assistance cases were up 9.2% and Safety Net cases were up 14.6% over first quarter 2010. The Combined Total number of cases was 11.5% higher over the same time period.

Medicaid Caseloads

Onondaga County, January 2000 - March 2011 (in thousands)



Compiled by Division of Management and Budget

In March 2011, there were 4,638 more cases or 9.4% more than in March 2010. The data represents monthly family caseloads [not individual] and includes Medicaid (non Temporary Assistance), SSI, and Temporary Assistance (Family Assistance and Safety Net).

All information has been compiled by :

Onondaga County
 Division of Management and Budget
 John H. Mulroy Civic Center, 14th Floor
 421 Montgomery Street
 Syracuse, NY 13202
 Phone: 315.435.3346
 Fax: 315.435.3439
 Website: www.ongov.net

Last Modified Date: Friday, May 06, 2011

Medicaid Cost Cap: Onondaga County pays the State a local contribution of Medicaid costs of 3.0% on the prior year's base.