

ONONDAGA COUNTY  
DEPARTMENT OF SOCIAL SERVICES  
JANUARY 19, 2012

PROGRAM	CASES	INDIVIDUALS	GROSS COSTS in millions	LOCAL COSTS in millions
<u>Public Benefit Programs</u>				
Medicaid	56,386	72,687	\$725 (est)	\$105
Family Assistance	3,398	9,917	\$ 25	\$ 0.2
Safety Net	2,653	4,788	\$ 25	\$ 16
Food Stamps	35,037	70,289	\$112 (est)	\$ 0
Day Care	1,649	3,525	\$ 17	\$ 4
Home Energy Assistance	43,767 /yr		\$ 18	\$ 0
Emergency Assistance for Adults		1,500/yr	\$ 0.9	\$ 0.4
<u>Casework Programs</u>				
Child Welfare				
Investigations		6,528/yr		
Foster Care		272	\$ 24	\$ 6
Adoptions		66/yr		
Juvenile Del (in FC)		18	\$ 3	\$ 0.4
State Training Schools		16	\$ 3	\$ 3
Adult Protective Services		681/yr		
<u>Child Support</u>	35,008 cases open. \$47 million collected in 2011.			
ADMINISTRATION	703 funded positions		\$ 74	\$ 15
PURCHASE OF SERVICES			\$ 11	\$ 4

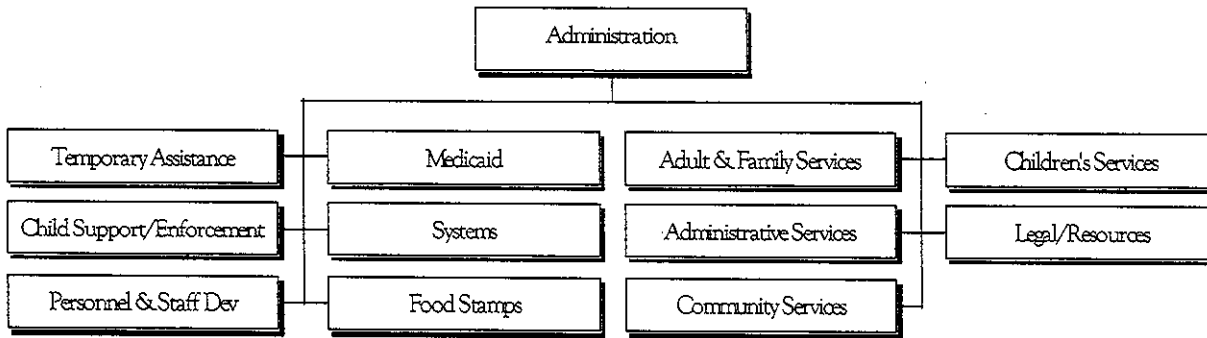
Note: Unless otherwise noted, December, 2011 caseload data was used, and cost information reflects the 2012 budget.  
The Juvenile Delinquency program is administered through the Probation Department.

## Program Description

- Medicaid: Medicaid is the nation's health care program for the poor. Persons receiving Family Assistance, Safety Net, or the federal SSI benefits are automatically eligible for MA. Others qualify on the basis of a means test.
- Family Assistance: FA is the federal cash assistance program for low income families.
- Safety Net: SN is the state cash assistance program for low income single adults, childless couples, or those families ineligible for federal FA benefits.
- Food Stamps: Also known as SNAP, FS is the federal program designed to expand food purchasing power for low-income families.
- Day Care: The Day Care program provides subsidies to low-income working families. Families eligible include those receiving cash assistance who are working or participating in a work preparation program, along with those low-income households that qualify through a means test.
- Home Energy Assist: HEAP is a seasonal program, providing regular and emergency benefits to low income households to defray heating costs.
- Emer Asst for Adults: EAA is an emergency financial assistance program for SSI recipients only.
- Child Welfare: Children's Division investigates all allegations of child maltreatment. Ongoing involvement depends on the nature of the abuse/neglect. Actions can range from Preventive Services to Termination of Parental Rights and Adoption.
- Adult Protective Services: PSA provides casework services to adults who have physical/emotional impairments, are at risk of harm, and who have no one able or willing to assist.
- Child Support: DSS is the community's child support bureau. Child Support enforces court orders to collect and disburse child support payments to non-custodial children.

# Department of Social Services

40 - 81



## Department Mission

The Onondaga County Department of Social Services is charged with the efficient and effective provision of those fiscal and service supports necessary to temporarily sustain dependent persons and assist them in achieving the greatest degree of independence and health possible while preserving the dignity of the individual.

### Contact Information

David Sutkowy	Commissioner	435-2985x143	<a href="mailto:david.sutkowy@dfa.state.ny.us">david.sutkowy@dfa.state.ny.us</a>	Civic Center, 12 <sup>th</sup> floor
Steve Morgan	Executive Deputy Commissioner	435-2985x151	<a href="mailto:steve.morgan@dfa.state.ny.us">steve.morgan@dfa.state.ny.us</a>	Civic Center, 12 <sup>th</sup> floor
Ava Kerznowski	Director, TA/FS/DC/HEAP	435-2700x304	<a href="mailto:ava.kerznowski@dfa.state.ny.us">ava.kerznowski@dfa.state.ny.us</a>	Civic Center, 3 <sup>rd</sup> floor
George Dooher	Director, Medicaid	435-2928x123	<a href="mailto:george.dooher@dfa.state.ny.us">george.dooher@dfa.state.ny.us</a>	Civic Center, 5 <sup>th</sup> floor
Mary Schapley	Director, Child Welfare	435-2978	<a href="mailto:mary.schapley@dfa.state.ny.us">mary.schapley@dfa.state.ny.us</a>	Civic Center, 7 <sup>th</sup> floor
Elizabeth Collins	Director, Child Support	435-3790	<a href="mailto:elizabeth.collins@dfa.state.ny.us">elizabeth.collins@dfa.state.ny.us</a>	Civic Center, 4 <sup>th</sup> floor
Paula Engel	Chief Welfare Attorney	435-2985x133	<a href="mailto:paula.engel@dfa.state.ny.us">paula.engel@dfa.state.ny.us</a>	Civic Center, 12 <sup>th</sup> floor
Anthony Morris	Director, Administrative Services	435-2955	<a href="mailto:anthony.morris@dfa.state.ny.us">anthony.morris@dfa.state.ny.us</a>	Civic Center, 4 <sup>th</sup> floor
Robert Wadsworth	Director, Information Systems	435-2703	<a href="mailto:robert.wadsworth@dfa.state.ny.us">robert.wadsworth@dfa.state.ny.us</a>	County Office Bldg, 4 <sup>th</sup> floor
Colleen Gunnip	Director, Personnel	435-2985x150	<a href="mailto:colleen.gunnip@dfa.state.ny.us">colleen.gunnip@dfa.state.ny.us</a>	Civic Center, 12 <sup>th</sup> floor
Sarah Merrick	Program Analyst/Administration	435-2985x165	<a href="mailto:sarah.merrick@dfa.state.ny.us">sarah.merrick@dfa.state.ny.us</a>	Civic Center, 12 <sup>th</sup> floor